

cn.mops - Mixture of Poissons for CNV detection in NGS data

Günter Klambauer

Institute of Bioinformatics, Johannes Kepler University Linz
Altenberger Str. 69, 4040 Linz, Austria
cn.mops@bioinf.jku.at

Version 1.4.12, March 8, 2013

Contents

1	Introduction	3
2	Getting started and quick start	3
3	Input of cn.mops: BAM files, GRanges objects, or numeric matrices	4
3.1	Read count matrices as input	4
3.2	BAM files as input	5
4	Copy number estimation with cn.mops	6
4.1	Running cn.mops	6
4.2	The result object	7
5	Visualization of the result	9
5.1	Chromosome plots	9
5.2	CNV region plots	10
6	Adjusting sensitivity, specificity and resolution for specific applications	11
7	Exome sequencing data	12
8	Heterosomes and CNVs of tumor samples	14
9	cn.MOPS for haploid genomes	15
10	How to cite this package	15

1 Introduction

The `cn.mops` package is part of the Bioconductor (<http://www.bioconductor.org>) project. The package allows to detect copy number variations (CNVs) from next generation sequencing (NGS) data sets based on a generative model. Please visit <http://www.bioinf.jku.at/software/cnmops/cnmops.html> for additional information.

To avoid the false discoveries induced by read count variations along the chromosome or across samples, we propose a “Mixture Of PoissonS model for CNV detection” (`cn.mops`). The `cn.mops` model is not affected by read count variations along the chromosome, because at each DNA position a local model is constructed. Read count variations across samples are decomposed by the `cn.mops` model into integer copy numbers and noise by its mixture components and Poisson distributions, respectively. In contrast to existing methods, `cn.mops` model’s posterior provides integer copy numbers together with their uncertainty. Model selection in a Bayesian framework is based on maximizing the posterior given the samples by an expectation maximization (EM) algorithm. The model incorporates the linear dependency between average read counts in a DNA segment and its copy number. Most importantly, a Dirichlet prior on the mixture components prefers constant copy number 2 for all samples. The more the data drives the posterior away from the Dirichlet prior corresponding to copy number two, the more likely the data is caused by a CNV, and, the higher is the informative/non-informative (I/NI) call. `cn.mops` detects a CNV in the DNA of an individual as a segment with high I/NI calls. I/NI call based CNV detection guarantees a low false discovery rate (FDR) because wrong detections are less likely for high I/NI calls. We assume that the genome is partitioned into segments in which reads are counted but which need not be of constant length throughout the genome. For each of such a segment we build a model. We consider the read counts x at a certain segment of the genome, for which we construct a model across samples. The model incorporates both read count variations due to technical or biological noise and variations stemming from copy number variations. For further information regarding the algorithm and its assessment see the `cn.mops` homepage at <http://www.bioinf.jku.at/software/cnmops/cnmops.html>.

2 Getting started and quick start

To load the package, enter the following in your R session:

```
> library(cn.mops)
```

The whole pipeline will only take a few steps, if BAM files are available (for read count matrices directly go to step 2):

1. Getting the input data from BAM files (also see Section 3.2 and Section 3).

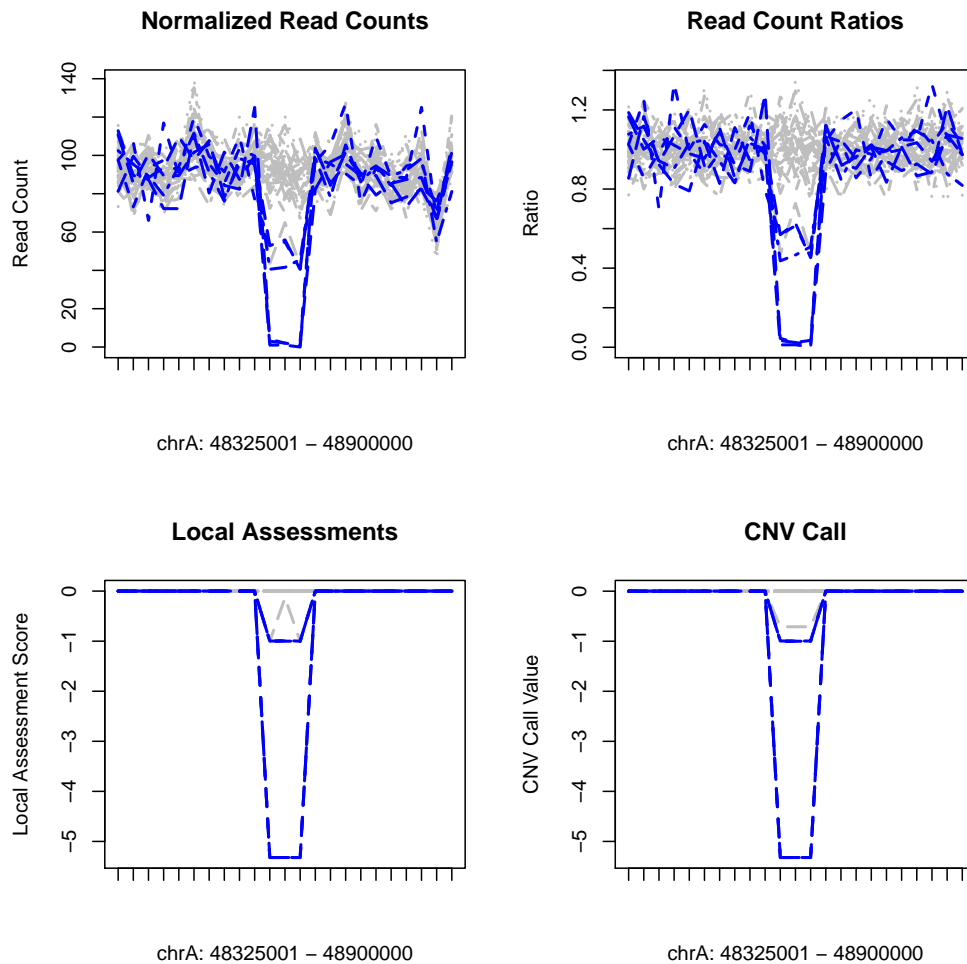
```
> BAMFiles <- list.files(pattern=".bam$")
> bamDataRanges <- getReadCountsFromBAM(BAMFiles)
```

2. Running the algorithm (also see Section 4.2).

```
> res <- cn.mops(bamDataRanges)
```

3. Visualization of the detected CNV regions. For more information about the result objects and visualization see Section 4.2.

```
> plot(res, which=1)
```



3 Input of cn.mops: BAM files, GRanges objects, or numeric matrices

3.1 Read count matrices as input

cn.mops does not require the data samples to be of any specific kind or structure. cn.mops only requires a *read count matrix*, i.e., given N data samples and m genomic segments, this is an $m \times N$ real- or integer-valued matrix \mathbf{X} , in which an entry x_{ij} corresponds to the read count of sample j in the i -th segment. E.g. in the following read count matrix sample three has 17 reads in the second segment: $x_{23} = 17$.

$$\mathbf{X} = \begin{matrix} & \text{Sample 1} & \text{Sample 2} & \text{Sample 3} & \text{Sample 4} \\ \text{Segment 1} & \left(\begin{array}{cccc} 88 & 82 & 79 & 101 \\ 83 & 78 & 71 & 99 \\ 43 & 50 & 55 & 37 \\ 47 & 58 & 48 & 42 \\ 73 & 86 & 95 & 91 \\ 92 & 90 & 80 & 71 \end{array} \right) \\ \text{Segment 2} \\ \text{Segment 3} \\ \text{Segment 4} \\ \text{Segment 5} \\ \text{Segment 6} \end{matrix}$$

`cn.mops` can handle numeric and integer matrices or `GRanges` objects, where the read counts are stored as values of the object.

3.2 BAM files as input

The most widely used file format for aligned short reads is the Sequence Alignment Map (SAM) format or in the compressed form the Binary Alignment Map (BAM). We provide a simple function that makes use of the `Rsamtools` package to obtain the alignment positions of reads. The result object of the function can directly be used as input for `cn.mops`. The author can provide functions for input formats other than BAM upon request: *cn.mops@bioinf.jku.at*.

```
> BAMFiles <- list.files(system.file("extdata", package="cn.mops"), pattern=".bam$",
+                         full.names=TRUE)
> bamDataRanges <- getReadCountsFromBAM(BAMFiles,
+                                       sampleNames=paste("Sample", 1:3), mode="unpaired")
```

In `bamDataRanges` you have now stored the genomic segments (left of the `|`'s) and the read counts (right of the `|`'s):

```
> (bamDataRanges)
```

`GRanges` with 9 ranges and 3 metadata columns:

	seqnames	ranges	strand	Sample.1	Sample.3	Sample.2
	<Rle>	<IRanges>	<Rle>	<integer>	<integer>	<integer>
[1]	20	[1, 7363000]	*	856	25	3
[2]	20	[7363001, 14726000]	*	0	0	0
[3]	20	[14726001, 22089000]	*	0	0	0
[4]	20	[22089001, 29452000]	*	0	0	0
[5]	20	[29452001, 36815000]	*	0	0	0
[6]	20	[36815001, 44178000]	*	0	0	0
[7]	20	[44178001, 51541000]	*	0	0	0
[8]	20	[51541001, 58904000]	*	0	0	0
[9]	20	[58904001, 63025519]	*	0	0	0

seqlengths:

20

NA

4 Copy number estimation with `cn.mops`

To get a first impression, we use a data set, where CNVs have been artificially implanted. The simulated data set was generated using distributions of read counts as they appear in real sequencing experiments. CNVs were implanted under the assumption that the expected read count is linear dependent on the copy number. For example in a certain genomic we expect λ reads for copy number 2, then we expect 2λ reads for copy number 4. The linear relationship was confirmed in different studies, like Alkan *et al.* (2009), Chiang *et al.* (2008) and Sathirapongsasuti *et al.* (2011).

4.1 Running `cn.mops`

The read counts are stored in the objects `X` and `XRanges`, which are the two basic input types that `cn.mops` allows:

```
> data(cn.mops)
> ls()

[1] "BAMFiles"          "CNVRanges"         "X"                  "XRanges"
[5] "bamDataRanges"     "cn.mopsVersion"    "exomeCounts"        "resCNMOPS"
```

The same data is stored in a `GRanges` object, in which we see the genomic coordinates, as well as the read counts (values):

```
> head(XRanges[,1:3])
```

`GRanges` with 6 ranges and 3 metadata columns:

	seqnames	ranges	strand	S_1	S_2	S_3
	<Rle>	<IRanges>	<Rle>	<integer>	<integer>	<integer>
[1]	chrA	[1, 25000]	*	102	93	109
[2]	chrA	[25001, 50000]	*	118	99	100
[3]	chrA	[50001, 75000]	*	85	81	82
[4]	chrA	[75001, 100000]	*	87	116	106
[5]	chrA	[100001, 125000]	*	87	68	89
[6]	chrA	[125001, 150000]	*	87	91	91

seqlengths:

```
chrA
NA
```

We are now ready to run `cn.mops` on the `GRanges` object:

```
> resCNMOPS <- cn.mops(XRanges)
```

To calculate integer copy number use the command `calcIntegerCopyNumbers`:

```
> resCNMOPS <- calcIntegerCopyNumbers(resCNMOPS)
```

Alternatively, it is possible to use an integer matrix, where the genomic coordinates can be stored as rownames and the entries are the read counts. For example the data from above represented by an integer matrix `X`:

```
> head(X[,1:3])
```

	S_1	S_2	S_3
Chr_A_1_25000	102	93	109
Chr_A_25001_50000	118	99	100
Chr_A_50001_75000	85	81	82
Chr_A_75001_100000	87	116	106
Chr_A_100001_125000	87	68	89
Chr_A_125001_150000	87	91	91

We are now ready to run `cn.mops` on the integer matrix:

```
> resCNMOPSX <- cn.mops(X)
```

To calculate integer copy number use the command `calcIntegerCopyNumbers`:

```
> resCNMOPSX <- calcIntegerCopyNumbers(resCNMOPSX)
```

Note that the two results `resCNMOPS` and `resCNMOPSRanges` identify the same CNVs:

```
> all(individualCall(resCNMOPSX)==individualCall(resCNMOPS))
```

4.2 The result object

To get a summary of the CNV detection result, just enter the name of the object (which implicitly calls `show`):

```
> (resCNMOPS)
```

The CNVs per individual are stored in the slot `cnvs`:

```
> cnvs(resCNMOPS)[1:5]
```

GRanges with 5 ranges and 4 metadata columns:

	seqnames	ranges	strand	sampleName	median
	<Rle>	<IRanges>	<Rle>	<factor>	<numeric>
[1]	chrA	[1775001, 1850000]	*	S_1	-1.0000000
[2]	chrA	[53300001, 53400000]	*	S_1	-5.3219281
[3]	chrA	[113175001, 113325000]	*	S_1	-0.9998479
[4]	chrA	[48575001, 48650000]	*	S_2	-5.3219281

```

[5]      chrA [ 70625001, 70750000]      * |      S_2 -5.3219281
      mean      CN
      <numeric> <character>
[1] -0.9999990      CN1
[2] -5.3219281      CNO
[3] -0.9995076      CN1
[4] -5.3219281      CNO
[5] -5.3219281      CNO
---
seqlengths:
chrA
NA

```

Segments, in which individual CNVs accumulate, are called CNV regions and can be accessed by `cnvr`:

```
> cnvr(resCNMOPS)[1,1:5]
```

GRanges with 1 range and 5 metadata columns:

```

      seqnames      ranges strand |      S_1      S_2      S_3
      <Rle>      <IRanges> <Rle> | <factor> <factor> <factor>
[1]      chrA [1775001, 1850000]      * |      CN1      CN2      CN2
      S_4      S_5
      <factor> <factor>
[1]      CN2      CN2
---
seqlengths:
chrA
NA

```

We now want to check, whether `cn.mops` found the implanted CNVs. We have stored the implanted CNVs (see beginning of Section) in the object `CNVRanges`.

```
> (CNVRanges[15,1:5])
```

GRanges with 1 range and 5 metadata columns:

```

      seqnames      ranges strand |      S_1      S_2      S_3
      <Rle>      <IRanges> <Rle> | <integer> <integer> <integer>
[1]      chrA [1751017, 1850656]      * |      1      2      2
      S_4      S_5
      <integer> <integer>
[1]      2      2
---
seqlengths:
chrA
NA

```


Next we identify overlaps between CNVs that were detected by `cn.mops` and CNVs that were implanted. Towards this end we use the functions of the `GenomicRanges` package.

```
> ranges(cnvr(resCNMOPS))[1:2]
```

```
IRanges of length 2
      start      end width
[1] 1775001 1850000 75000
[2] 5525001 5600000 75000
```

```
> ranges(cnvr(resCNMOPS)) %in% ranges(CNVRanges)
```

```
[1] TRUE TRUE TRUE TRUE TRUE TRUE TRUE TRUE TRUE TRUE TRUE TRUE TRUE TRUE
[15] TRUE TRUE TRUE TRUE TRUE
```

The function `cn.mops` creates an instance of the S4 class `CNVDetectionResult` that is defined by the present package. To get detailed information on which data are stored in such objects, enter

```
> help(CNVDetectionResult)
```

5 Visualization of the result

5.1 Chromosome plots

`cn.mops` allows for plotting the detected segments of an individual at one chromosome by a plot similar to the ones produced by `DNACopy`:

```
> segplot(resCNMOPS, sampleIdx=13)
```

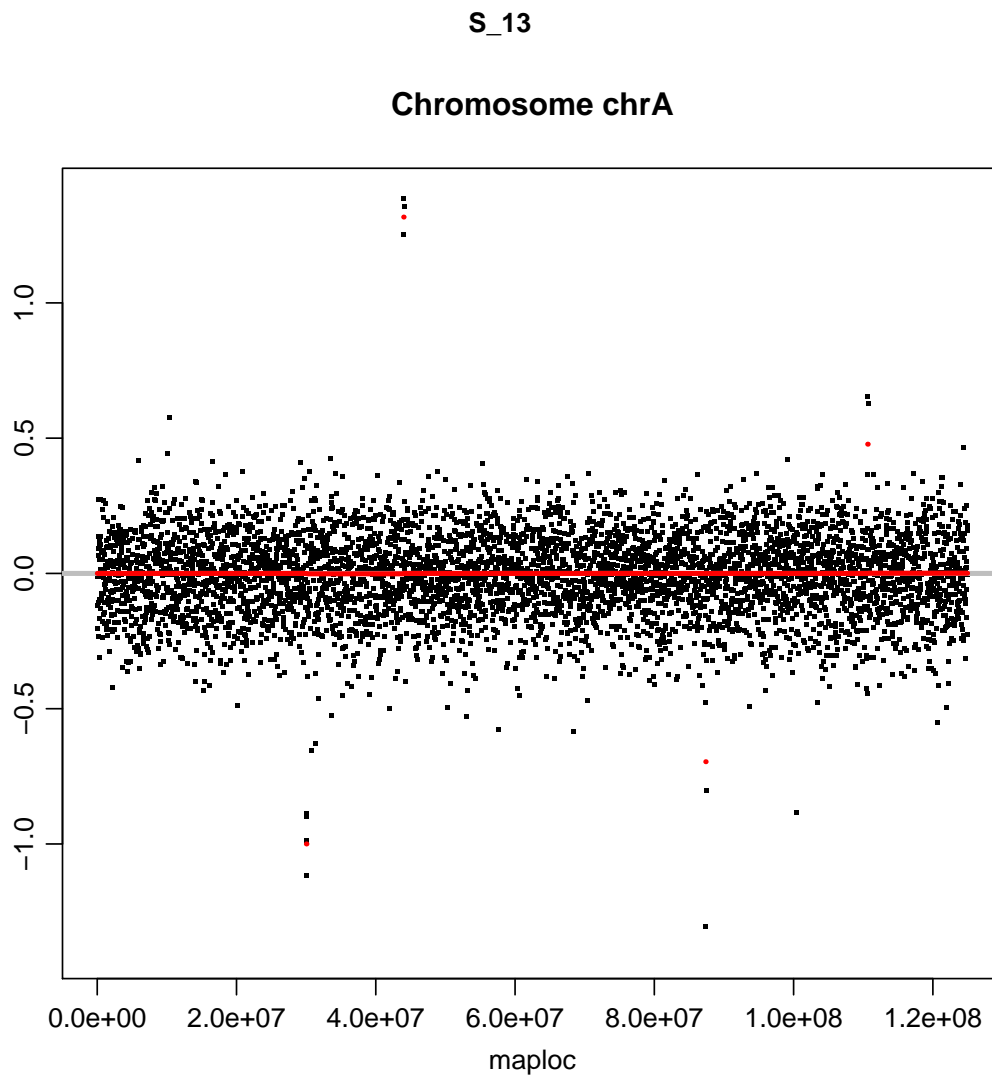


Figure 1: The x-axis represents the genomic position and on the y-axis we see the log ratio of the read counts (green) and the copy number call of each segment (red).

5.2 CNV region plots

`cn.mops` allows for plotting the detected CNV regions:

```
> plot(resCNMOPS, which=1)
```

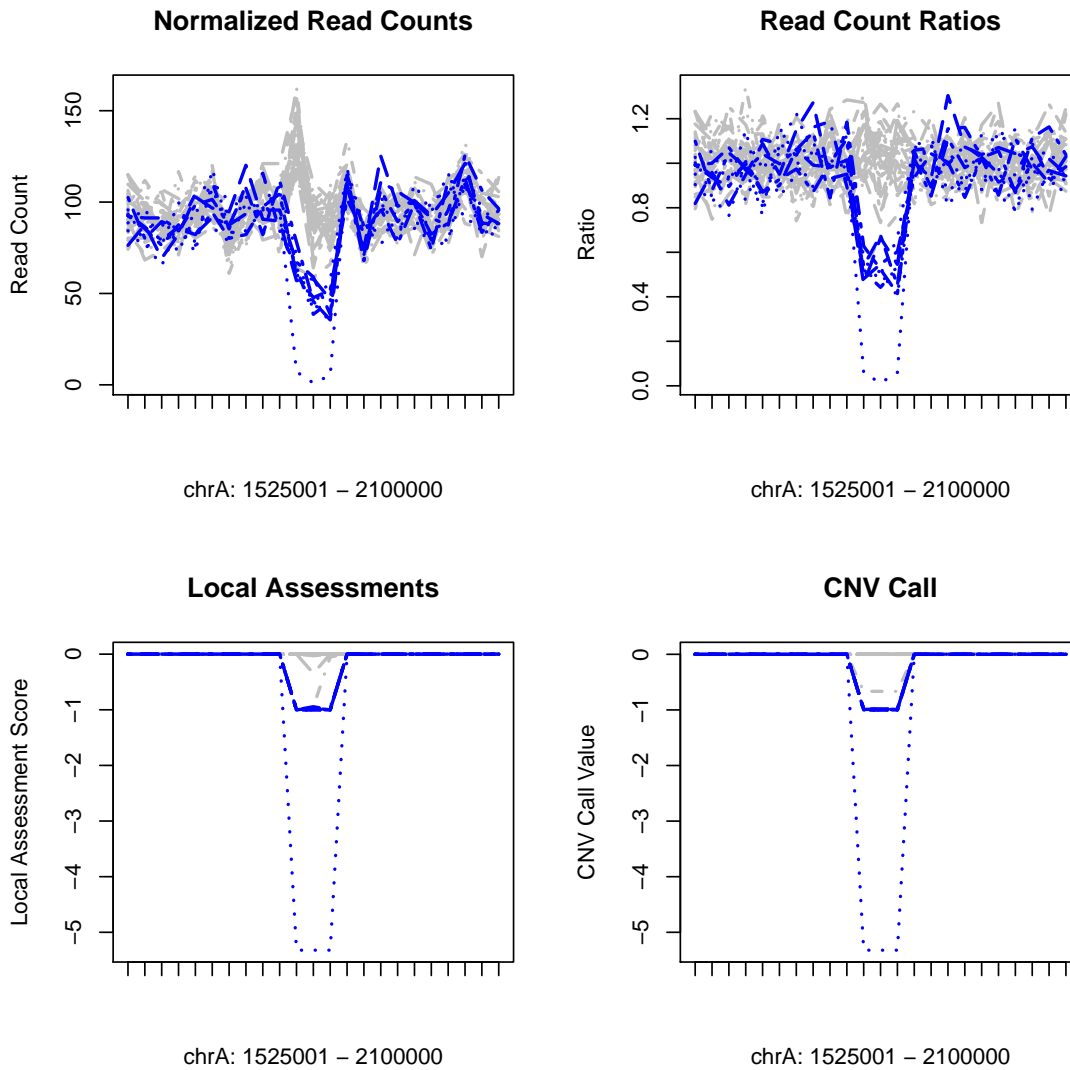


Figure 2: The x-axis represents the genomic position and on the y-axis we see the read counts (left), the call of the local model (middle) and the CNV call produced by the segmentation algorithm. Blue lines mark samples having a copy number loss.

6 Adjusting sensitivity, specificity and resolution for specific applications

The default parameters of both the local models of `cn.mops` and the segmentation algorithm were optimized on a wide ranged of different data sets. However, you might want to adjust sensitivity and specificity or resolution to your specific needs.

- upperThreshold** The calling threshold for copy number gains, a positive value. Lowering the threshold will increase the detections, raising will decrease the detections.
- lowerThreshold** The calling threshold for copy number losses, a negative value. Raising the threshold will increase the detections, lowering will decrease the detections.
- priorImpact** This parameter should be optimized for each data set, since it is influenced by number of samples as well as noise level. The higher the value, the more samples will have copy number 2, and consequently less CNVs will be detected.
- minWidth** The minimum length of CNVs measured in number of segments. The more adjacent segments with a high or low copy number call are joined, the higher the confidence in the detections. A lower value will lead to more shorter segments, and a higher value will yield to less, but longer segments.

The length of the initial segments is also crucial. They should be chosen such that on average 100 reads lie in one segment. The `WL` parameter of `getReadCountsFromBAM` determines this resolution.

7 Exome sequencing data

To apply `cn.mops` to exome sequencing data requires a different preprocessing, since constant windows spanning the whole genome are not appropriate. The initial segments in which the reads are counted should be chosen as the regions of the baits, targets or exons. The read count matrix can now be generated by using the function `getSegmentReadCountsFromBAM` that requires the genomic coordinates of the predefined segments as `GRanges` object. The resulting read count matrix can directly be used as input for `cn.mops`. A possible processing script could look like the following:

```
> library(cn.mops)
> BAMFiles <- list.files(pattern=".bam$")
> segments <- read.table("targetRegions.bed", sep="\t", as.is=TRUE)
> gr <- GRanges(segments[,1], IRanges(segments[,2], segments[,3]))
> X <- getSegmentReadCountsFromBAM(BAMFiles, GR=gr, mode="unpaired")
> resCNMOPS <- exomecn.mops(X)
> resCNMOPS <- calcIntegerCopyNumbers(resCNMOPS)
```

We included an exome sequencing data set in this package. It is stored in `exomeCounts`.

```
> resultExomeData <- exomecn.mops(exomeCounts)
> resultExomeData <- calcIntegerCopyNumbers(resultExomeData )

> plot(resultExomeData, which=2)
```

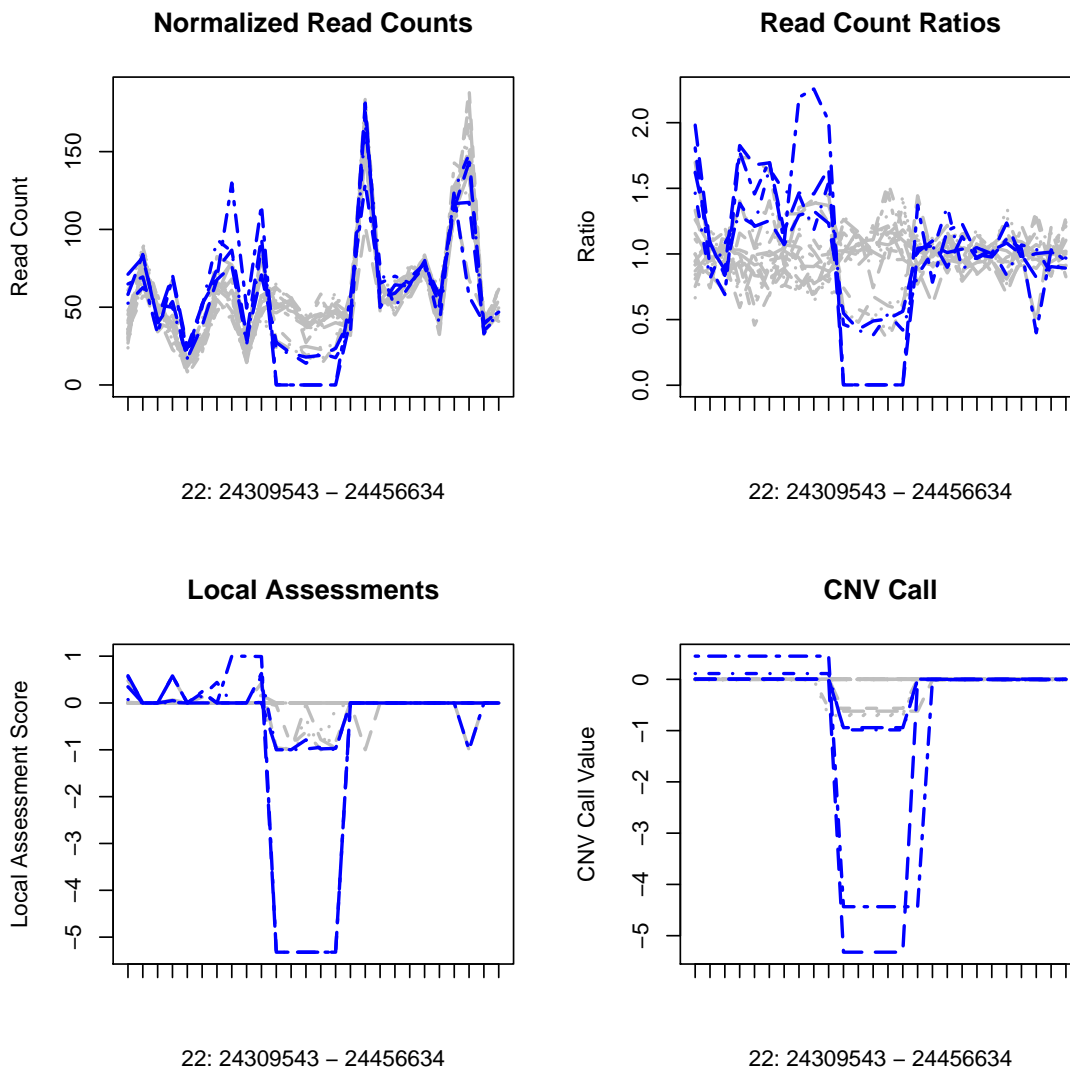


Figure 3: ExomeSeq data results.

Possible issues and notes A problem can occur, if the names of the reference sequences, e.s. chromosomes, are inconsistent between the bed file and the bam file. For example "chr1", "chr2", ..., "chrX", "chrY" and "1", "2", ..., "X", "Y". This can easily be solved by replacing the seqlevels of the GRanges object:

```
> #the following removes the "chr" from reference sequence names
> seqlevels(gr) <- gsub("chr","",seqlevels(gr))
```

Results can also be improved if you extend your target regions by a small amount of bases to the left and to the right (in the following case it is 30bp):

```
> gr <- GRanges(segments[,1],IRanges(segments[,2]-30,segments[,3]+30))
> gr <- reduce(gr)
```

8 Heterosomes and CNVs of tumor samples

With the default settings the normalization procedure assumes that the ploidy of each sample is the same. However, it is possible to account for different karyotypes. When analyzing CNVs on the X or Y chromosome one possibility is to treat males and females separately. The second option is to provide the normalization function with the information about the gender, that is different ploidy states of the X and Y chromosome. This can be handled by the `ploidy` parameter of the normalization function. In the following we show the normalization for the X chromosome, if the first 10 individuals are males (ploidy set to 1) and the next 30 individuals are females (ploidy set to 2):

```
> XchrX <- normalizeChromosomes(X[1:500, ],ploidy=c(rep(1,10),rep(2,30)))
> cnvr(calcIntegerCopyNumbers(cn.mops(XchrX,norm=FALSE)))
```

GRanges with 1 range and 40 metadata columns:

	seqnames	ranges	strand	S_1	S_2	S_3	S_4
	<Rle>	<IRanges>	<Rle>	<factor>	<factor>	<factor>	<factor>
[1]	undef	[1, 500]	*	CN1	CN1	CN1	CN1
	S_5	S_6	S_7	S_8	S_9	S_10	S_11
	<factor>	<factor>	<factor>	<factor>	<factor>	<factor>	<factor>
[1]	CN1	CN1	CN1	CN1	CN1	CN1	CN2
	S_12	S_13	S_14	S_15	S_16	S_17	S_18
	<factor>	<factor>	<factor>	<factor>	<factor>	<factor>	<factor>
[1]	CN2	CN2	CN2	CN2	CN2	CN2	CN2
	S_19	S_20	S_21	S_22	S_23	S_24	S_25
	<factor>	<factor>	<factor>	<factor>	<factor>	<factor>	<factor>
[1]	CN2	CN2	CN2	CN2	CN2	CN2	CN2
	S_26	S_27	S_28	S_29	S_30	S_31	S_32
	<factor>	<factor>	<factor>	<factor>	<factor>	<factor>	<factor>
[1]	CN2	CN2	CN2	CN2	CN2	CN2	CN2
	S_33	S_34	S_35	S_36	S_37	S_38	S_39
	<factor>	<factor>	<factor>	<factor>	<factor>	<factor>	<factor>
[1]	CN2	CN2	CN2	CN2	CN2	CN2	CN2
	S_40						
	<factor>						
[1]	CN2						

seqlengths:	undef						
	NA						

Karyotype information can also improve results of CNV detection in tumor samples. The best results can be reached, if for each chromosome the number of appearances in the cell is known. In this case normalization should be applied to each chromosome separately.

9 cn.MOPS for haploid genomes

For haploid genomes the prior assumption is that all samples have copy number 1. The function `haplocn.mops` implements the cn.MOPS algorithm adjusted to haploid genomes.

```
> resHaplo <- haplocn.mops(X)
> resHaplo <- calcIntegerCopyNumbers(resHaplo)
```

10 How to cite this package

If you use this package for research that is published later, you are kindly asked to cite it as follows: (Klambauer *et al.*, 2012).

To obtain BibTeX entries of the reference, you can enter the following into your R session:

```
> toBibtex(citation("cn.mops"))
```

References

- Alkan, C., Kidd, J. M., Marques-Bonet, T., Aksay, G., Antonacci, F., Hormozdiari, F., Kitzman, J. O., Baker, C., Malig, M., Mutlu, O., Sahinalp, S. C., Gibbs, R. A., and Eichler, E. E. (2009). Personalized copy number and segmental duplication maps using next-generation sequencing. *Nat. Genet.*, **41**(10), 1061–1067.
- Chiang, D. Y., Getz, G., Jaffe, D. B., Zhao, X., Carter, S. L., Russ, C., Nusbaum, C., Meyerson, M., and Lander, E. S. (2008). High-resolution mapping of copy-number alterations with massively parallel sequencing. *Nat. Methods*, **6**, 99–103.
- Klambauer, G., Schwarzbauer, K., Mitterecker, A., Mayr, A., Clevert, D.-A., Bodenhofer, U., and Hochreiter, S. (2012). cn.MOPS: Mixture of Poissons for Discovering Copy Number Variations in Next Generation Sequencing Data with a Low False Discovery Rate. *Nucleic Acids Research*, **40**(9), e69.
- Sathirapongsasuti, F. J., Lee, H., Horst, B. A., Brunner, G., Cochran, A. J., Binder, S., Quackenbush, J., and Nelson, S. F. (2011). Exome Sequencing-Based Copy-Number Variation and Loss of Heterozygosity Detection: ExomeCNV. *Bioinformatics*, **27**(19), 2648–2654.