

ZyXEL G-560

802.11g Wireless Access Point

Quick Start Guide

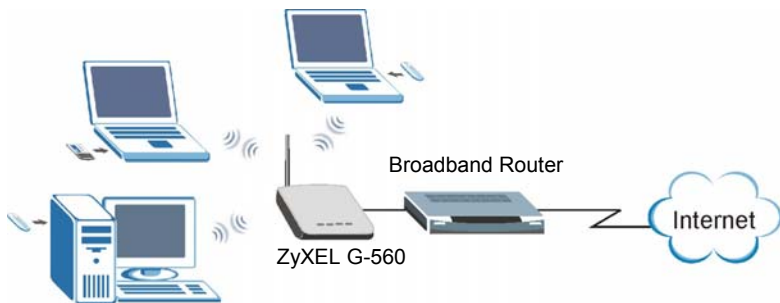
Version 2.0

01/2005

ZyXEL
Unleash Networking Power

1 Overview

This Quick Start Guide shows you how to connect the G-560 to a broadband router for wireless Internet access. The wireless adapters on the computers must comply with the IEEE 802.11b or 802.11g wireless standards.



2 Hardware Installation

2.1 Requirements

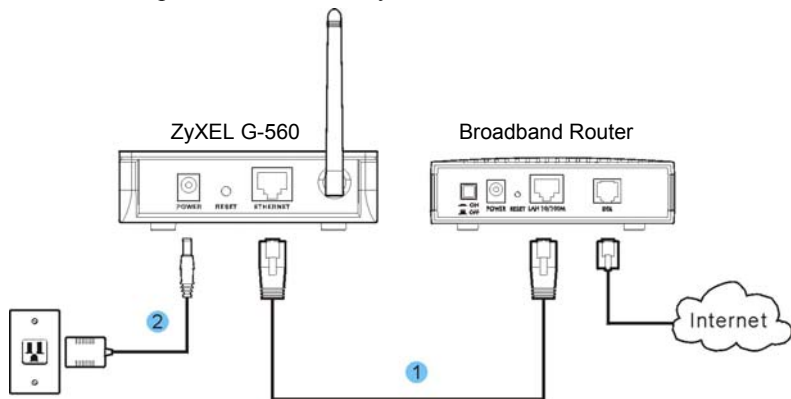
Before installation, make sure you have the following:

- Power Adaptor (12V DC, 1.25A) (Included)
- Ethernet Cable (straight-through or crossover) (Included)
- Broadband Router

Use only the supplied power adaptor to connect the G-560.

2.2 Making the Connections

Follow the steps below to connect your G-560 for Internet access.



1. Connect your broadband router to the G-560's **ETHERNET** port with an Ethernet cable.
2. Connect the included power adapter to the G-560's **POWER** port and connect the power adaptor to a power supply (outlet).

3 Installation Verification

3.1 LED Display

When the power and the **ETHERNET** port are properly connected, the **PWR** blinks while performing system tests and then turns steady on. The **ETHN** and the **WLAN** LEDs also turn on. See the *Front Panel LED Description* table in the *User's Guide* for more information.



3.2 Default Settings

Use a wireless-ready computer to search for and join the wireless network to access the Internet.

The default settings of the G-560 are shown below:

SSID: ZyXEL G-560

Channel: 6

Security: Disable

Security is disabled by default. This means your neighbor could access and see your network traffic.

See the *User's Guide* for how to enable wireless security.

4 One-Touch Intelligent Security Technology (OTIST)

OTIST allows a ZyXEL g+ access point (AP) or wireless router to assign its SSID and security settings (WEP or WPA-PSK) to the ZyXEL wireless adapters that support OTIST and are within transmission range. The ZyXEL wireless adapters must also have OTIST enabled.

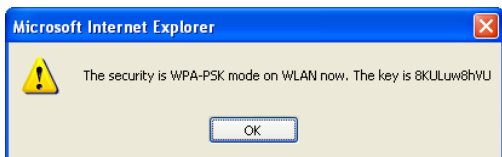
This will replace the pre-configured wireless settings on the wireless adapters.

4.1 How to configure your devices for OTIST

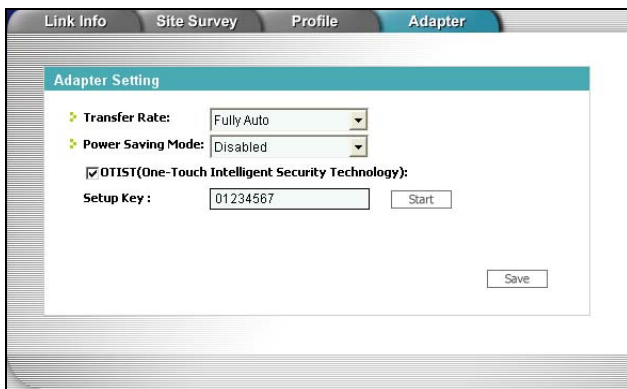
1. In the **OTIST** web configurator screen of your G-560, enter an OTIST setup key of exactly eight ASCII characters. The default key is 01234567.
2. Click **Start** to encrypt the wireless security data using the setup key.



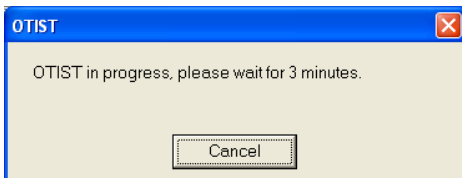
3. A dialog box displays the G-560 security settings. Click **OK** to proceed with the OTIST setup.



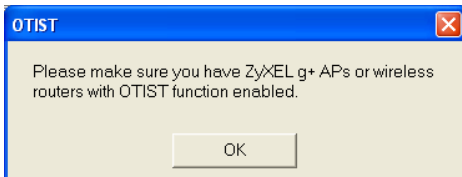
4. Open the **Adapter** screen of the ZyXEL wireless adapter utility, enter the same setup key as the G-560's.
5. Select the **OTIST (One-Touch Intelligent Security Technology)** checkbox and click **Start**.



6. An OTIST in progress screen appears. The process takes three minutes. During this time the OTIST-enabled wireless adapters search for the G-560 to associate.



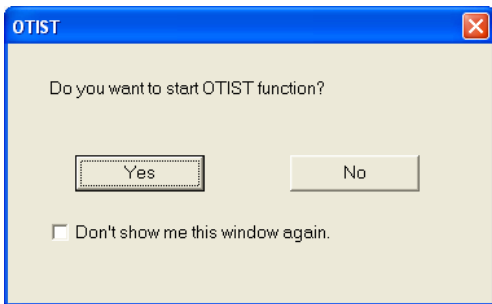
7. If the wireless adapter cannot find the G-560 after three minutes, a warning screen displays. Make sure that OTIST has been enabled on the G-560. Click **OK** to go back to the ZyXEL utility main screen.



8. When the following screen in the G-560 web configurator closes, your current G-560 wireless settings are automatically saved to the wireless adapters.



9. If you activate OTIST on the wireless adapter, each time you start the ZyXEL utility, the following screen appears. Click **Yes** to have the G-560 within transmission range to assign the wireless settings. You must also activate and start OTIST on the G-560 at the same time. Otherwise, click **No**.



5 Hardware Mounting

In general, the best location for the access point is at the center of your intended wireless coverage area. For better performance, mount the G-560 in a place that is high up and free of obstructions.

5.1 Wall-mounted

Follow the steps to attach your G-560 to a wall.

1. Locate a high position on the wall that is free of obstructions.
2. Connect two screws (not included) in the wall 74mm apart. Use screws with 6mm ~ 8mm (0.24" ~ 0.31") wide heads. Do not screw the screws all the way into the wall. Leave a small gap between the head of the screw and the wall. The gap must be big enough for the screw heads to slide into the screw slots and the connection cables to run down the back of the G-560.



Make sure the screws are securely fixed to the wall and strong enough to hold the weight of the G-560 with the connection cables.

3. Adjust the cables.
 - a. Run the connection cables down the back of the G-560.
- OR:
- b. Run the connection cables upward and along the edge of the ceiling.



4. Align the holes on the back of the G-560 with the screws on the wall. Hang the G-560 on the screws.

Procedure to View a Product's Certification(s)

1. Go to www.zyxel.com.
2. Select your product from the drop-down list box on the ZyXEL home page to go to that product's page.
3. Select the certification you wish to view from this page.