

Hardware Installation

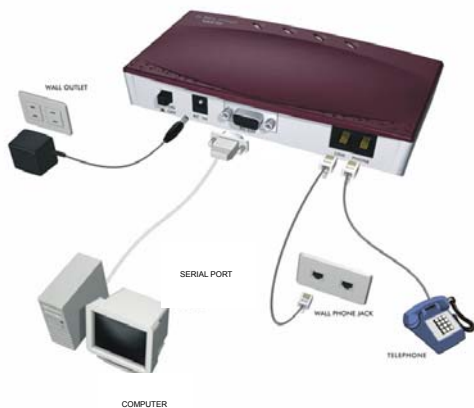
Step 1. Connect your modem to your analog phone or fax.

Step 2. Use telephone wire to connect the modem to a wall phone jack.

Step 3. Use the RS-232 cable to connect the modem to your computer's serial port.

Step 4. Use the included power adapter to connect your modem to a power outlet.

Step 5. Turn on your modem and then turn on your computer and insert the included CD.



Register online at www.zyxel.com for free product updates and information.

Driver Installation

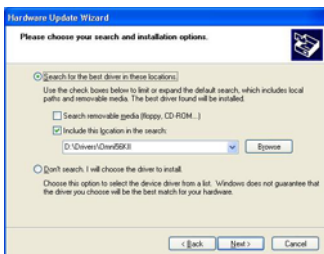
Windows automatically starts an installation wizard when it detects new hardware. Use the wizard to select the driver on your included CD. Browse to **D:\Drivers\Omni56KII** (where D: is your CD-ROM drive), and click **Next** or **OK**.

Windows 98



Windows Me



Windows 2000**Windows XP**

Click Yes or Continue Anyway if a warning screen appears.

Restart your computer if prompted.

If Windows does not automatically detect your modem, make sure that the modem is connected and turned on. Then restart your computer or use the add new hardware option in **Control Panel** to start the installation wizard. Browse on the CD to the location described above.

Dial-Up Networking

Fill in the wizard screens with information from your ISP to create a new dial-up connection.

Windows 98: Click **Start, Programs, Accessories, Communications, Dial-Up Networking**.

Double-click the **Make New Connection** icon.

Windows 2000/Me: Click **Start, Settings, Network and Dial-Up Connections, Make New Connection**.

Windows XP: Click **start, All Programs, Accessories, Communications, New Connection Wizard**.

After you set up the connection, click or double click the new connection. A pop-up window requests your username and password.

Installing Bitware From the Included CD

Bitware software lets you transmit faxes or talk on the telephone while using the Internet.

Step 1. Insert the included CD.

Step 2. Choose the Bitware program from the Product list-box, and select your Windows system and language on the right side, then click **Install**.

Follow the wizard to complete the installation process.



Troubleshooting

- Check your modem's connections to the computer and the telephone wall jack.
- Make sure that the included power adapter is connected to the modem and plugged into an appropriate and functioning power outlet, and that the modem is turned on.
- Make sure that you have entered your ISP information correctly. The password may be case-sensitive, so make sure that the caps lock key is not turned on.
- Make sure that your computer's TCP/IP settings are configured properly.