



Release Note

Vantage CNM 2.2 Service Pack

2.2.00.61.03

ZyXEL Vantage CNM Service Pack

2.2.00.61.03

Release Note

Date: 2006/7/25

Objective:

This Service Pack (2.2.00.61.03) includes some feature enhancements:

1. Support P662HW-D1, P662H-D1, ZW2 Plus.
2. Support P662HW-61, P662H-61 LAN-to-WAN ACL.
3. Required Device F/W version:

ZW2PLUS:	4.00(XU.2)
P662H-D1:	3.40(AGZ.3)
P662HW-D1:	3.40(AGZ.3)
P662HW-61:	3.40(QR.9)
P662H-61:	3.40(QR.9)

And bug fixing on CNM 2.2 (version code 2.2.00.61.02). After upgrade, the version code will change to 2.2.00.61.03(Note 1).

The Service Pack can be applied to CNM 2.2.00.61.02 directly. However, it can not be applied to other version. [For people who is using 2.2.00.61.00 or 2.2.00.61.01 \(check the version under System>>about\), please apply the upgrade patch 2.2.00.61.01 & 2.2.00.61.02 in advance.](#)

For the detailed, please read below.

Supported Platforms

Vantage Service Pack 2.2.00.61.03 Environment Requirement:

1. Hardware platform:

Vantage CNM 2.2 server hardware requirements:

CPU: Intel P4 2.6G or better

Memory: 2G or better

Hard Disk: 80G or better

Vantage CNM 2.2 client hardware requirements:

CPU: Intel P3 450 MHz or better

2. Software environment:

Server: Microsoft Windows XP

Client: Microsoft IE 6.0 or later, SP1 is limited. Screen resolution supported: 1024*768

Other system services such as FTP daemon, syslog daemon, SMTP daemon and telnet daemon are also needed for Vantage CNM featured services.

Notes

1. If there are devices which have been managed by Vantage CNM, it would be recommended to do System >> Maintenance >> Back up before upgrade operation.
2. Please reference to [Appendix A](#) to get detail information.

Known Issues

1. ZW 2 Plus is not supported in VPN Monitor.
2. Firewall rule name has some issue:
 Step 1. ZW 2 Plus, turn to Configuration>>Firewall>>Firewall Rule add a rule.
 Step 2. Fill Rule Name and edit the Source/Destination Address after edit, the Rule Name field change blank.

Features

[NEW FEATURE] Support P662HW-D1, P662H-D1, ZW2 Plus.

[NEW FEATURE] Support P662HW-61, P662H-61 LAN-to-WAN ACL.

P662HW-D1 and P662H-D1 Feature List:

Menu Item	Sub Item	Support
General	System	Y
	DDNS	Y
	Time Setting	Y(partially)
LAN	IP	Y
	Static DHCP	Y
DMZ	DMZ TCP/IP	Y
WAN	Setup	Y
	Backup	Y
NAT		Y
WLAN		N
VPN	NetBIOS	Y
	Summary	Y
Device Log		Y
ADSL Monitor		Y
Firewall		Y

ZW2 Plus Feature List:

Menu Item	Sub Item	Support
General	System	Y
	DDNS	N
	Time Setting	Y
LAN	IP	Y
	Static DHCP	Y
	IP Alias	Y
DMZ		N
WAN	General	Y
	WAN1	Y
	Dial Backup	Y
Static Route		Y
NAT		Y
WLAN		N
VPN		Y
Device Log		Y
Firewall		Y

[MODIFICATION] 'IPSec MSS' in Configuration >> VPN >> NetBIOS, value range modified to 1~65535, initial value is 0.

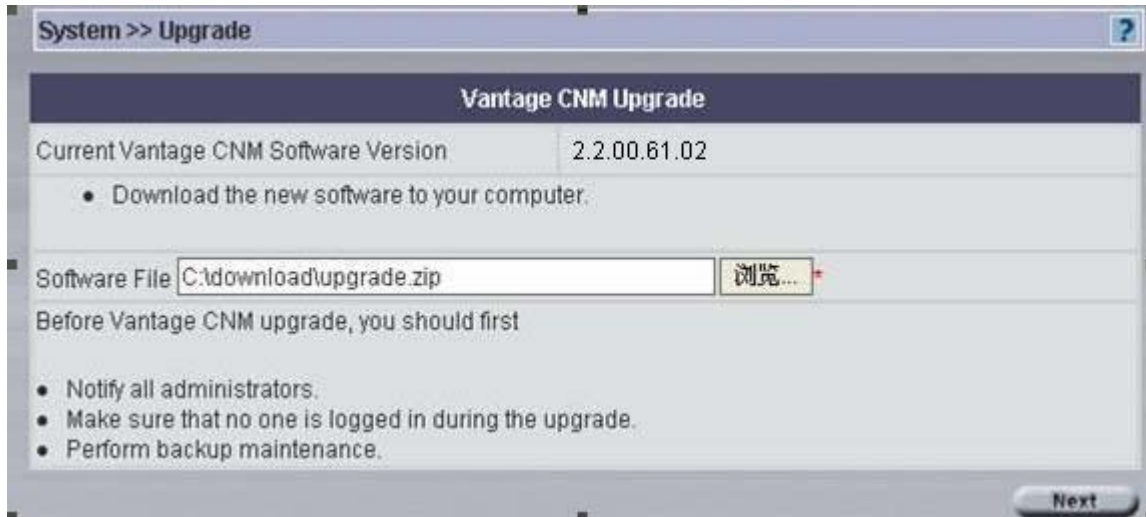


[MODIFICATION] P662HW-61 firewall configuration, direction LAN to WAN is supported.

Appendix

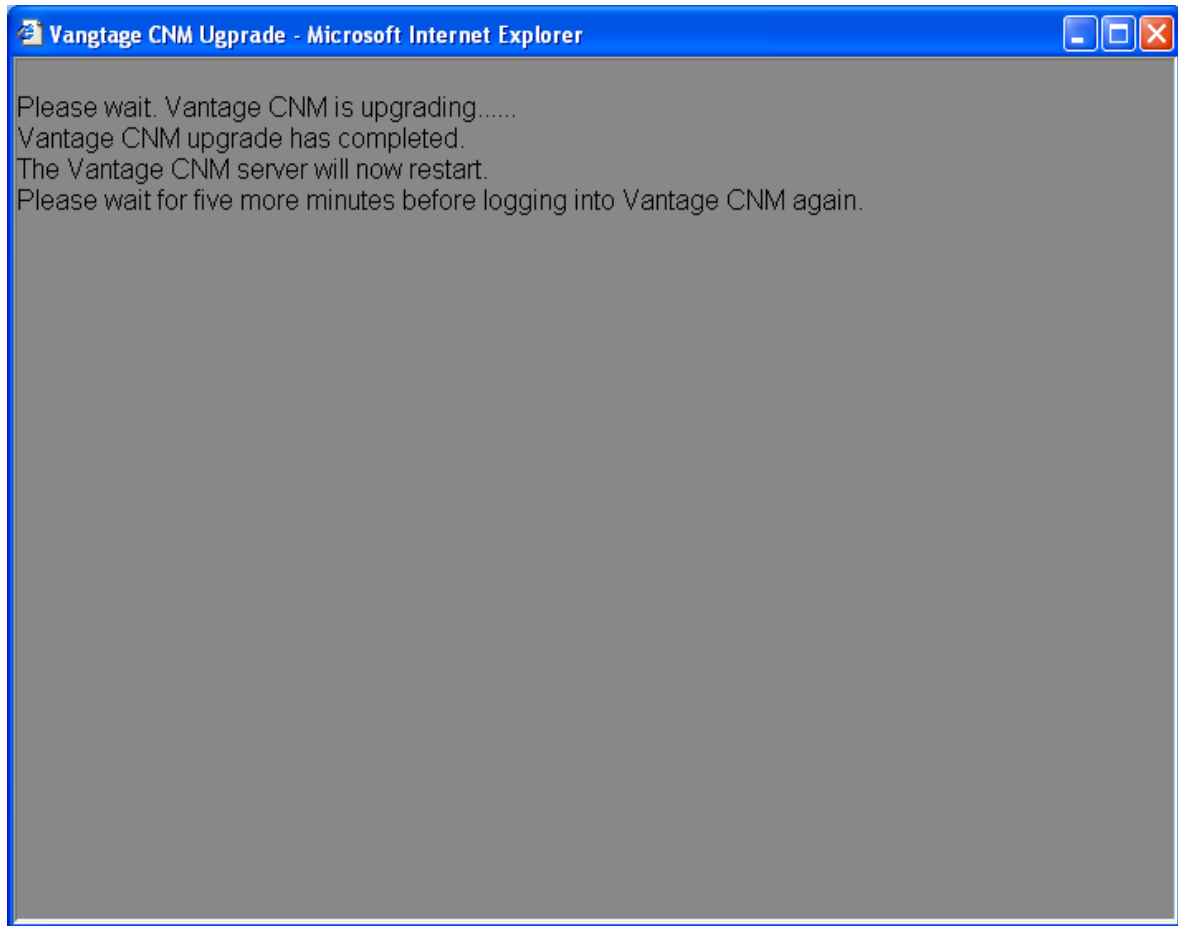
Appendix A: Vantage CNM Upgrade Operation (Windows version)

Login Vantage CNM as root account. Click menu System >> upgrade, and then select the Vantage CNM upgrade zip file by click “Browse” button.



Click Yes, then Vantage CNM browser disappears and a new window popup shown down below.





After about five minutes, when upgrade completes, please restart Vantage.

Appendix B: Model ID Issue

P662H-D1 and P662HW-D1 share the same model id.

P662H-61 and P662HW-61 share the same model id.