

Research Article

A Mixed L2 Norm Regularized HRF Estimation Method for Rapid Event-Related fMRI Experiments

Yu Lei, Li Tong, and Bin Yan

China National Digital Switching System Engineering and Technological Research Center, Zhengzhou 450002, China

Correspondence should be addressed to Bin Yan; tom.yan@gmail.com

Received 4 January 2013; Revised 26 March 2013; Accepted 8 April 2013

Academic Editor: Lei Ding

Copyright © 2013 Yu Lei et al. This is an open access article distributed under the Creative Commons Attribution License, which permits unrestricted use, distribution, and reproduction in any medium, provided the original work is properly cited.

Brain state decoding or “mind reading” via multivoxel pattern analysis (MVPA) has become a popular focus of functional magnetic resonance imaging (fMRI) studies. In brain decoding, stimulus presentation rate is increased as fast as possible to collect many training samples and obtain an effective and reliable classifier or computational model. However, for extremely rapid event-related experiments, the blood-oxygen-level-dependent (BOLD) signals evoked by adjacent trials are heavily overlapped in the time domain. Thus, identifying trial-specific BOLD responses is difficult. In addition, voxel-specific hemodynamic response function (HRF), which is useful in MVPA, should be used in estimation to decrease the loss of weak information across voxels and obtain fine-grained spatial information. Regularization methods have been widely used to increase the efficiency of HRF estimates. In this study, we propose a regularization framework called mixed L2 norm regularization. This framework involves Tikhonov regularization and an additional L2 norm regularization term to calculate reliable HRF estimates. This technique improves the accuracy of HRF estimates and significantly increases the classification accuracy of the brain decoding task when applied to a rapid event-related four-category object classification experiment. At last, some essential issues such as the impact of low-frequency fluctuation (LFF) and the influence of smoothing are discussed for rapid event-related experiments.

1. Introduction

In the last decade, multivoxel pattern analysis (MVPA) has become a widely used analysis method in cognitive neuroscience especially in decoding brain activities at different states [1–4]. MVPA mainly focuses on single-trial blood-oxygen-level-dependent (BOLD) responses to identify different brain states. In some experiments, to obtain an effective and reliable classifier or computational model, numerous samples should be collected using rapid event-related designs [3]. However, for rapid event-related designs, the overlapping of BOLD signals in the time domain encumbers the extraction of a real trial-specific BOLD response, which is important for MVPA. Hence, the accurate estimation of a trial-specific BOLD response is a challenging problem in rapid event-related MVPA.

Traditional estimating approaches are mainly classified into two groups. Model-based methods involve prior hemodynamic response function (HRF), whereas model-free methods have no assumptions on the shape of HRF. Model-based methods differ in the assumptions of the shape of HRF,

such as the canonical double gamma function [5], Poisson function [6], radial basis function [7], and inverse logit function [8]. Previous reports revealed the capability of HRFs in the traditional univariate statistical analysis especially in activation-based analysis. However, most brain state decoding experiments or information-based analysis aim to obtain fine-grained spatial activation patterns that can help improve the performance of our decoding model [9]. Therefore, an accurate estimation that reflects real neural activities is necessary to obtain more fine-grained spatial activation patterns. In these cases, we cannot ignore the high variation in the temporal responses of different voxels across individuals as well as across tasks, regions of the brain, and different days within individuals [10]. Hence, model-free methods that are more sensitive and accurate have been widely used [11, 12].

For a model-free method, a voxel-specific HRF contains one free parameter for each time point. Thus, an HRF of arbitrary shape of each voxel that provides much more flexibility in data analysis can be obtained. In a model-free method, the first step is always to estimate a voxel-specific

HRF and use this HRF to deconvolve BOLD signals [13]. When estimating a voxel-specific HRF, the BOLD response is often assumed to be a linear time-invariant (LTI) system [14]. Then, one of the main solutions is to represent the HRF with a linear combination of basis functions [15, 16]. Another solution is to treat the HRF at each point as a free parameter [17]. This paper alternatively focuses on the latter one. Modeling low-frequency fluctuation (LFF) is another problem in HRF estimation that should be addressed [18]. The linear drift in the obtained images is a challenging problem in fMRI data analysis because of the poor HRF estimates. A simple strategy for removing linear drift is to detrend time-series data as a preprocessing step [19, 20]. Alternatively, LFF may be modeled in a nuisance matrix consisting of some basis functions as regressors. This strategy enables not only linear detrending but also LFF removal to some extent [21], resulting in a more flexible and efficient detrending model.

Given that BOLD images have high noise, regularization is a popular technique that allows constraints to be imposed on HRF estimates to suppress the impact of noises when employing a parameter-free model. The smooth finite-impulse response (FIR) method [22] is a good example of regularization to smooth estimates. Tikhonov regularization may also be used to impose smoothness [23]. In [24, 25], Tikhonov regularization is combined with generalized cross-validation (GCV) to reduce the computational burden involved in parameter selection. Accordingly, Tikhonov regularization is also used in this paper. However, smoothness is only one of the local features of a signal, which could not reflect the global structure of a signal. Therefore, in extremely rapid event-related experiments, considering only smoothness is not enough to suppress the overlapping of different events, resulting in deformed HRF shape. Hence, we add an additional L2 regularization component into the estimation model with Tikhonov regularization, called mixed L2 norm (MN) regularization. Using this regularization method, we cannot only retain the smooth feature of HRFs but also prevent the significant overlapping of adjacent events. Furthermore, this method is a parameter-free model, indicating that it is adaptive to the variability of HRFs across voxels and individuals.

We first outlined the HRF and response estimation methods, especially the proposed MN estimation method and the classification approach used to assess their performances. All methods were applied to four-category object classification data to compare the classification accuracy. We also compared the classification performances between object responsive (OR) voxels and voxels in the early visual cortex. Finally, we discussed the role of LFF and the impact of smoothness in MVPA.

2. Materials and Methods

2.1. Subjects. Ten healthy subjects (six males and four females) participated in this fMRI study. The study was approved by the Institutional Review Board of China National Digital Switching System Engineering and Technology Research Center. All subjects provided written informed consent and had normal vision.

2.2. Stimuli. The stimuli consisted of four categories (car, animal, building, and human face) of color images, including 50 different images in each category. All images were cropped to the center (700 pixels \times 700 pixels) and placed onto a gray-scale background.

Visual stimuli were rear-projected onto a screen in the scanner bore using a luminance-calibrated LCD projector driven by a PC. The subjects viewed the screen from a mirror. The display resolution was 1024 \times 768, and the stimulus presentation script was written using MATLAB (The Mathworks) and Psychtoolbox 3.0 (<http://psychtoolbox.org/>).

2.3. Experimental Design. Each subject participated in three task runs, four localizer runs, and one retinotopic mapping run. In the task runs, images were presented in a 4 s stimulus trial. In each trial, an image was first presented for 2 s, and the gray background was presented for the last 2 s. Each presentation consisted of an image being periodically flashed ON-OFF, where ON corresponds to the presentation of the image for 200 ms and OFF corresponds to the presentation of the gray background for 200 ms. The first two task runs consisted of 70 distinct images randomly presented once for each time. The last task run consisted of 60 distinct images also randomly presented once for each time. After every five stimulus trials, a blank trial that lasted for 4 s was conducted as a break.

In localizer runs, the subjects were presented with blocks of images for each category. Each run consisted of 12 blocks, with 6 task blocks and 6 control blocks. The task block lasted the same time as the control block for 30 s. Each localizer run consisted of six images randomly selected from the same image category. Each task block consisted of an image being periodically flashed ON-OFF, where ON corresponds to the presentation of the image for 200 ms and OFF corresponds to the presentation of the gray background for 200 ms. The OR voxels were a set of voxels that were strongly activated in at least one localizer run (t -test, $P = 0.005$, family-wise error corrected).

Another standard retinotopic mapping run with polar stimuli was performed to delineate the early visual areas on a flattened cortex.

2.4. Data Acquisition. The data were collected using a 3-T GE Discovery 750 (General Electric, Fairfield, CT, USA) scanner with a standard head coil at the Imaging Center of Henan Province. For each subject, a standard gradient-echo-planar imaging series was used to collect functional images with the following parameters: repetition time (TR), 2000 ms; echo time (TE), 30 ms; field of view, 220 mm \times 220 mm; matrix size, 64 \times 64; 39 slices; slice thickness, 3.5 mm; flip angle (FA), 80°; and voxel size, 3.4 mm \times 3.4 mm \times 3.5 mm. In addition, a high-resolution three-dimensional T1-weighted anatomical image was acquired (TR, 8.268 ms; TE, 3.24 ms; FA, 12°).

2.5. Data Preprocessing. All fMRI data were preprocessed with SPM8 (Statistical Parametric Mapping, <http://www.fil.ion.ucl.ac.uk/spm/software/spm8/>) and REST (<http://www.restfmri.net/>). The first 10 volumes of each run were discarded because of the instability of initial magnetic resonance

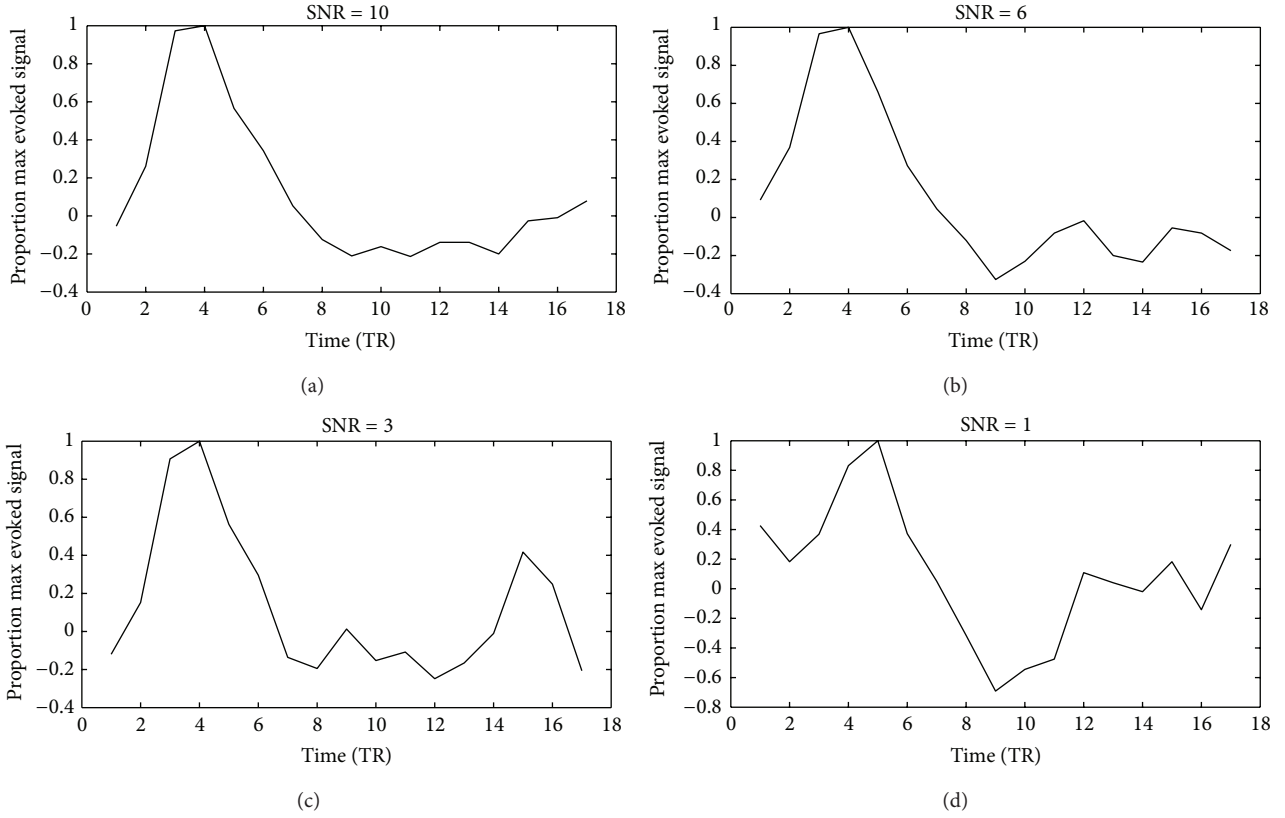


FIGURE 1: Simulation results of the HRF estimates using Tikhonov regularization. The x -axis indicates the time relative to the event onset ($TR = 2$ s), and the y -axis indicates the BOLD signal. Each HRF estimate was normalized by dividing it by its maximum value.

Considering the above-mentioned regularization terms, the mixed L2 norm (MN) regularization could be written as

$$\text{minimize } \|\mathbf{S}\mathbf{h} + \mathbf{P}\mathbf{b} - \mathbf{y}\|_2^2 + \delta^2 \|\mathbf{D}\mathbf{h}\|_2^2 + \gamma^2 \|\mathbf{C}\mathbf{h}\|_2^2. \quad (10)$$

Then, the HRF estimator derived is

$$\hat{\mathbf{h}} = (\mathbf{S}^T \mathbf{J} \mathbf{S} + \delta^2 \mathbf{D}^T \mathbf{D} + \gamma^2 \mathbf{C}^T \mathbf{C}) \mathbf{S}^T \mathbf{J} \mathbf{y}, \quad (11)$$

where $\mathbf{J} = (\mathbf{I} - \mathbf{P}\mathbf{P}^T)$. δ and γ are trade-off parameters to adjust the weight of the different regularization terms.

Using this new regularization term, smoothness and prior information about the HRF shape can be added to the estimation process. Hence, the noise caused by short ISI is removed.

2.8. Simulation Study: Tikhonov Regularization versus MN Regularization. To understand the difference between Tikhonov regularization and MN regularization, we first compared the HRF estimation result in a simulation study. Figure 1 shows the result of this simulation study using Tikhonov regularization, where the ISI was set to 2 s and the duration of stimuli was also set to 2 s. Time series was produced by convolving the stimulus vector with canonical double gamma HRF. Then, the Gaussian white noise of different signal-to-noise ratios (SNRs) was added to it. The result implied that with decreasing SNR, the overlapping

increasingly destabilized the tail of the HRF estimates. Figure 2 shows the result of the same simulation study using MN regularization. Compared with Figure 1, the result shows that when an additional regularization term was employed, most of the instability in the HRF estimates was suppressed. Based on this simulation study, the MN regularization method showed a great improvement in estimating HRF in a rapid event-related experiment.

2.9. Response Estimation Method. When voxel-specific HRFs are computed, we should deconvolve the time-series with the HRFs to obtain the real trial-specific BOLD responses. Reference [13] compared many deconvolving methods for multivoxel pattern classification analysis, such as FIR, ridge regression, partial least square, and support vector regression. In the following section, we will focus on the least square separate (LS-S) model.

In a rapid event-related fMRI data analysis, the traditional general linear model (GLM) suffers from collinearity induced by the correlation between trial-specific regressors. This collinearity could result in highly variable and unreliable estimates because of the lack of information that is unique to specific trials [13]. To reduce collinearity, we can modify the strategy of regressor construction or use regularization methods such as ridge regression [30] and partial least square [31]. In this paper, we use a regressor construction strategy called LS-S [13], which runs a GLM for each trial. The trial

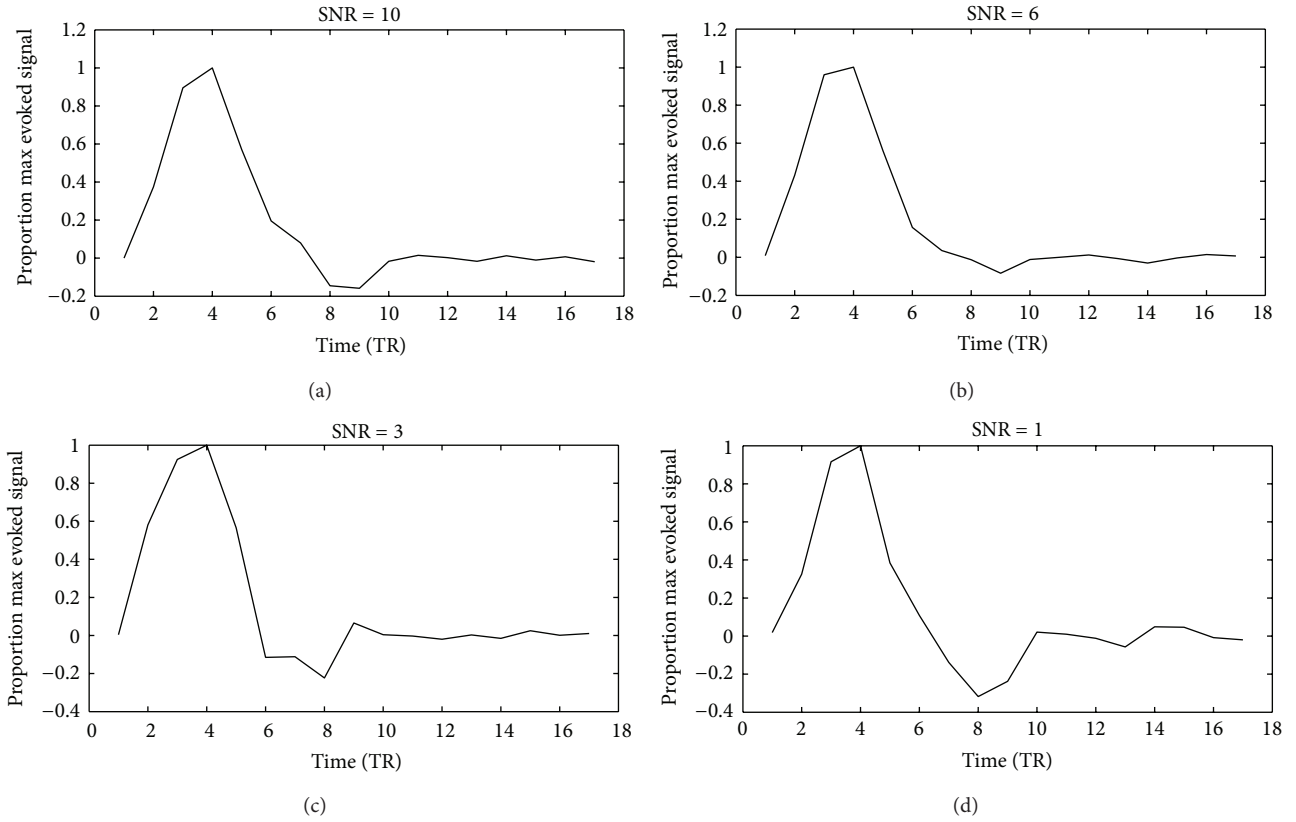


FIGURE 2: Simulation results of the HRF estimates using mixed-norm regularization. The x -axis indicates the time relative to the event onset ($TR = 2$ s), and the y -axis indicates the BOLD signal. Each HRF estimate was normalized by dividing it by its maximum value.

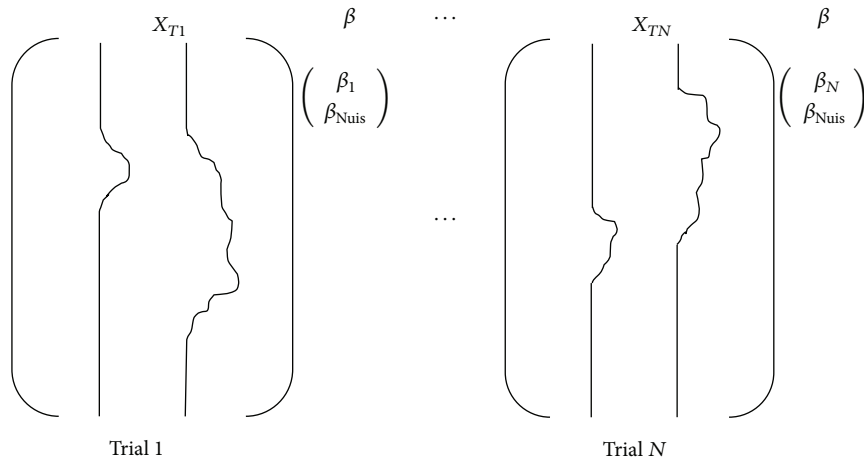


FIGURE 3: LS-S model. The design matrix has two regressors, one for the trial of interest and another for all other trials simultaneously. X_{T1} aims to obtain the activation estimate for trial 1. Therefore, a regressor is conducted for trial 1, and a second regressor is conducted for all other trials. The estimate for β_1 based on this design is the estimate activation for trial 1. This method is repeated N times to obtain the estimates for all N trials.

is modeled as the regressor of interest, and all other trials are combined into a single nuisance regressor. Thus, if we have N trials, we need to run the LS-S model N times to obtain each trial-specific response. The LS-S model is illustrated in Figure 3.

2.10. *Classification Method and Statistical Analysis.* As a widely used linear classifier, linear support vector machine (SVM) has been proved efficient in handling high-dimensional data. In our study, we also used the linear SVM based on LIBSVM [32] to compare the classification

TABLE 1: Mean number of voxels across all subjects used in different methods. Unselected voxels were all located in OR areas or early visual areas. Voxels were selected from the unselected voxel set based on the selection criterion. Object responsive (OR) voxels were strongly activated in localizer runs (t -test, $P = 0.005$, familywise error corrected). Retinovegels were located in the early visual area, which was delineated via retinotopic mapping analysis.

	OLS	LS-AR (1)	MN
OR			
Unselected	2682	2682	2682
Selected	387 ± 127	425 ± 163	1334 ± 246
Retino			
Unselected	1290	1290	1290
Selected	221 ± 103	276 ± 112	721 ± 175

performances of the different estimation methods. The dataset was divided into five parts, and a fivefold “leave-one-out” cross-validation was applied to obtain the average classification accuracy. Lastly, the classification performances of the different methods were statistically compared using Wilcoxon signed-rank pair test.

3. Results and Discussion

This study aims to find an efficient method for estimating voxel-specific HRFs in a rapid event-related design fMRI study, which could deconvolve the BOLD time series to obtain the real BOLD activation signals associated with specific stimuli. The three task runs are divided into two parts. The third task run with 60 images is used to estimate voxel-specific HRFs and the other two task runs are used for classification analysis. In the following, we present the results of the analysis. Some essential aspects of this problem are also discussed.

3.1. Comparison of Different HRF Estimation Methods. To evaluate the performance of different HRF estimation methods in decoding brain states, we compared the classification accuracy of OLS, LS-AR (1), MN, and canonical double gamma HRF. Given the noise of the fMRI BOLD signals, we found that not all of the estimated HRFs of the voxels are acceptable. Considering this problem, we proposed a voxel selection criterion based on the prior knowledge about the BOLD responses. We assumed that $h(0)$ was near zero and that the minimum value of normalized $h(t)$ could not be less than -1 . Furthermore, after 12 s, the BOLD responses should fall to the baseline. In other words, the voxel should be removed if it satisfies the following condition: $|h(0)| > 0.3$, $\max(h(t) \mid t > 12 \text{ s}) > 0.4$, and $\min(h(t)) > -1$, where $h(t)$ is the estimated HRF of a voxel.

Table 1 shows the mean number of voxels across all subjects before and after selection. The result indicates that good HRF estimates for all voxels could not be obtained in OR areas or early visual areas because of the noise in the time series. Therefore, invalid voxels were eliminated under the above-mentioned selection criterion. In addition, owing

to the regularization, we obtained more voxels using the new MN estimation method.

In the simulation study, the MN method showed its capability in rapid event-related experiments. Here, the HRF estimation of the different methods was compared using real data. Figure 4 shows one of the subjects’ estimated HRFs in the OR areas. Figures 4(a) and 4(b) show the significant overlapping of the time series and a fake peak in the end of the estimated HRF using the OLS or LS-AR (1) method. However, in the MN estimation method, the fake peak was strongly suppressed because of the additional regularization term, as shown in Figure 4(c). Figure 4(d) shows the canonical double gamma function [33].

The shape of the estimated HRFs intuitively showed the difference of the investigated methods. However, the shape could not be used to quantify this difference. Therefore, the classification accuracy based on real data was used to compare quantitatively the different methods. Figure 5 shows the mean classification accuracy of the different HRF estimation methods across all subjects. For the different estimation methods, the classification results were 80.96%, 72.25%, 69.76%, 72.74%, 72.25%, and 71.51%. The results indicate that MN performed significantly better than the other five methods (Wilcoxon signed-rank pair test, $P = 0.01$).

The number of voxels after selection by different methods was different. The effect of the size of voxel set should therefore be considered. We applied MN to the voxel set selected by OLS or LSAR to investigate the impact of the size of voxel set. Figure 6 shows that MN also performed significantly better than OLS and LSAR using the voxels selected by LSAR or OLS (Wilcoxon signed-rank pair test, $P = 0.01$). For the different estimation methods, the classification results were 80.96%, 72.25%, 69.76%, 79.59%, and 78.88%. This result indicates that the MN estimation method improved the classification accuracy and not the number of voxels.

Recent studies have illustrated the shape of HRF [5]. As a widely known model, the canonical HRF has been successfully used in fMRI studies, especially in univariate analysis or activation-based analysis. However, with the development of high-resolution fMRI, information-based analysis was applied for brain decoding [34]. In the present study, when voxel-specific HRFs were used, the classification accuracy significantly increased.

Many studies suggested that the fMRI time series has temporal autocorrelation between residual errors [27]. However, the present results indicated no significant differences in the classification accuracy between the least-square models with and without AR (1).

In our MN estimation method, no assumption is made on the noise model, and the only task is the selection of regularization parameters. Considering that the selection of proper regularization parameters is one of the most important steps in solving regularization problems, many articles focused on the regularization parameter selection strategy to improve the performance of regularization, such as generalized cross-validation (GCV) [35], Bayesian information criterion (BIC) [36], and Akaike information criterion (AIC) [37]. In the present study, to simplify the problem, we selected the best

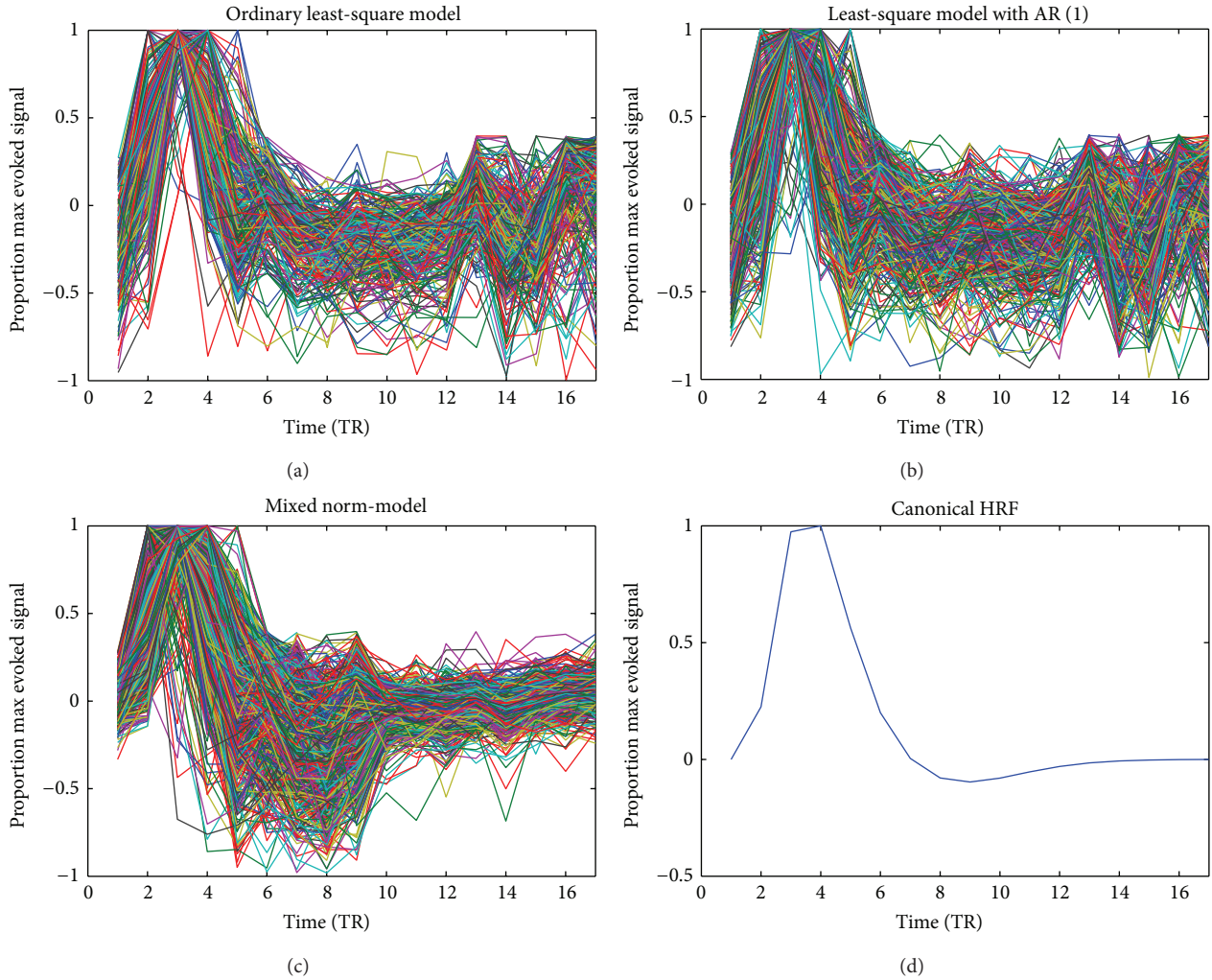


FIGURE 4: Inspection of the HRF estimates of the different methods. The lines in different colors represent the different HRF estimates of the voxels. The x -axis indicates the time relative to the event onset ($TR = 2$ s), and the y -axis indicates the BOLD signal. Each HRF estimate was normalized by dividing it by its maximum value.

one from a set of parameters. Although this strategy might not identify the best parameters, this method also performed significantly better than the other methods.

3.2. Impact of Smoothing on Brain Decoding. We compared the classification accuracy of the smoothed and unsmoothed data to investigate the impact of smoothing on brain decoding. Figure 7 shows the classification accuracies of the different HRF estimation methods. For the smoothed data, the classification results were 81.03%, 69.74%, 67.23%, 74.39%, 72.49%, and 70.3%. For the unsmoothed data, the classification results were 80.96%, 72.25%, 69.76%, 72.74%, 72.25%, and 71.51%. The results implied no significant difference between the smoothed and unsmoothed data in brain decoding (Wilcoxon signed-rank pair test, $P = 0.01$). This conclusion is consistent with the finding of a previous study [38].

Smoothing is a standard preprocessing step in traditional activation-based or univariate analysis. However, in MVPA,

whether smoothing should be conducted is unclear [38–40]. Many studies smooth the fMRI data before analysis to increase the SNR [41–43]. However, considering that smoothing may blur data, some studies omitted smoothing in analysis [1–3]. To preserve fine-grained pattern information, [39] suggested that smoothing should be omitted or strongly reduced.

Our result in this study implies that smoothing may not decrease the sensitivity and performance of brain decoding. However, this result does not mean that smoothing does not blur the fine-grained weak spatial information across voxels. A detailed explanation is given by [40]. If a study does not focus on subvoxel information sources or fine-grained information, smoothing would not matter.

3.3. Effect of LFF. The LFF compensation model is widely used in estimating voxel-specific HRFs. Figure 8 shows a comparison of the estimated HRF using LS-AR (1) with and without the LFF model in one of our subjects. Based on the

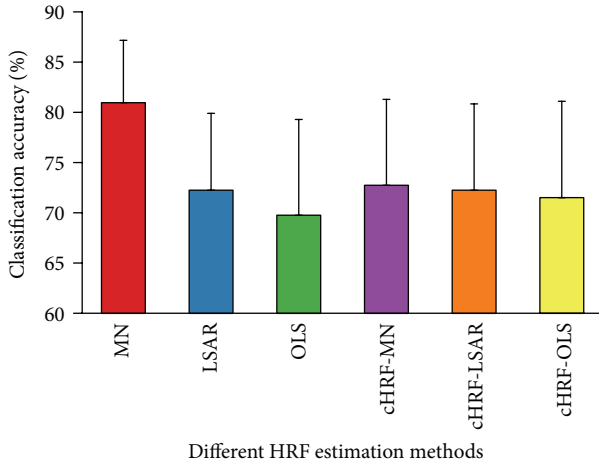


FIGURE 5: Bars show the classification accuracies of the different HRF estimation methods (cHRF-MN, canonical HRF with voxels selected by MN; cHRF-LSAR, canonical HRF with voxels selected by LSAR; and cHRF-OLS, canonical HRF with voxels selected by OLS). Error bars show the standard error of the mean classification accuracy across subjects.

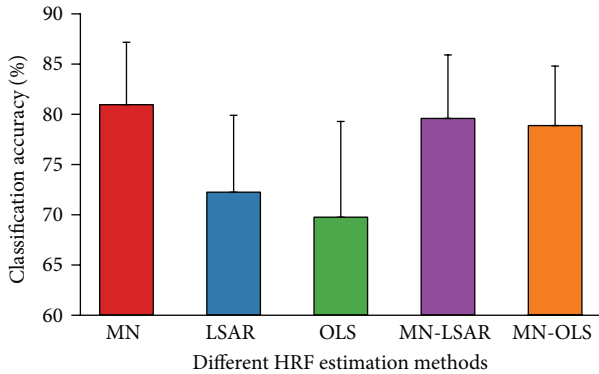


FIGURE 6: Effect of the size of voxel set. MN-LSAR, mixed-norm estimation was applied to the voxel set selected by LSAR; MN-OLS, mixed-norm estimation was applied to the voxel set selected by OLS. Error bars show the standard error of the mean classification accuracy across subjects.

results, LFF had a large impact on HRF estimates. However, when we deconvolved the BOLD response from the fMRI time series, the impact of LFF was ignored. By contrast, in the MVPA analysis, wherein one of our goals is to exploit the information of weakly activated voxels, LFF significantly reduced the classification accuracy.

In the current study, we compared the classification performances of the response estimation method with and without the LFF compensation component. Figure 9 illustrates the effect of LFF in brain decoding. For the model with LFF, the classification results were 80.96%, 72.25%, 69.76%, 72.74%, 72.25%, and 71.51%. For the model without LFF, the classification results were 73.81%, 65.04%, 63.3%, 72.09%, 71.1%, and 69.23%. These results indicated that the model with LFF compensation performed significantly better than that

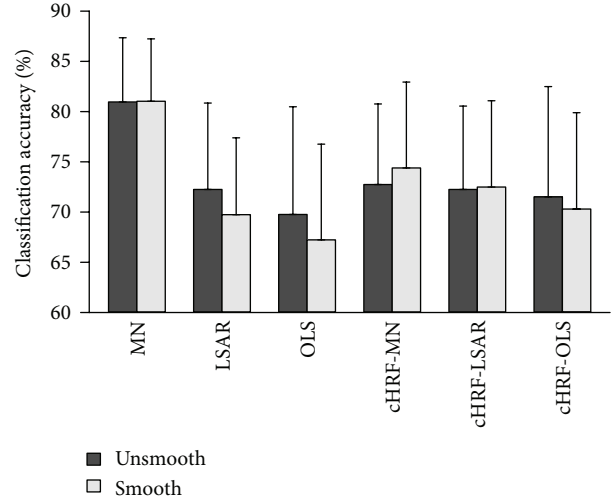


FIGURE 7: Comparison of smooth and unsmooth data. Classification accuracies estimated with fivefold leave-one-out cross-validation. Each method was applied to both unsmooth and smooth data to investigate the impact of smoothing. cHRF-MN, canonical HRF with voxels selected by MN; and cHRF-LSAR, canonical HRF with voxels selected by LSAR; cHRF-OLS, canonical HRF with voxels selected by OLS. Error bars show the standard error of the mean classification accuracy across subjects.

without LFF compensation (Wilcoxon signed-rank pair test, $P = 0.01$). Interestingly, no significant difference was found between the models with and without the LFF compensation component using canonical HRF. Our results implied that LFF plays an important role not only in HRF estimation but also in response estimation.

3.4. Classification Performances of Different Masks. For each subject, we defined a mask of OR voxels in the occipital and temporal cortex that responded strongly in at least one of the four localizer runs. Then, nearly 3000 voxels were selected for each subject. The voxels in these areas were previously shown to provide information about object category [1, 44]. We also tested the classification accuracy in early visual areas, which were delineated by retinotopic mapping [26]. The classification accuracies in both masks are summarized in Figure 10. The classification results for the OR voxels were 80.96%, 72.25%, 69.76%, 72.74%, 72.25%, and 71.51%. The classification results for the retinovoxels were 79.99%, 65.59%, 64.67%, 68.83%, 66.24%, and 66.05%. The results showed that the OR voxels performed better than the retinovoxels in all six cases (significantly better in LSAR, OLS, cHRF-MN, cHRF-LSAR, and cHRF-OLS. Wilcoxon signed-rank pair test, $P = 0.05$).

These results demonstrated that the object category information has a distributed representation in the occipital and temporal areas. This information could improve the performance of classification. Therefore, localizer runs are necessary in object-related brain decoding experiments. Furthermore, in a brain-computer interface system with visual information, the spatially distributed information in large areas should not be ignored to obtain a better result.

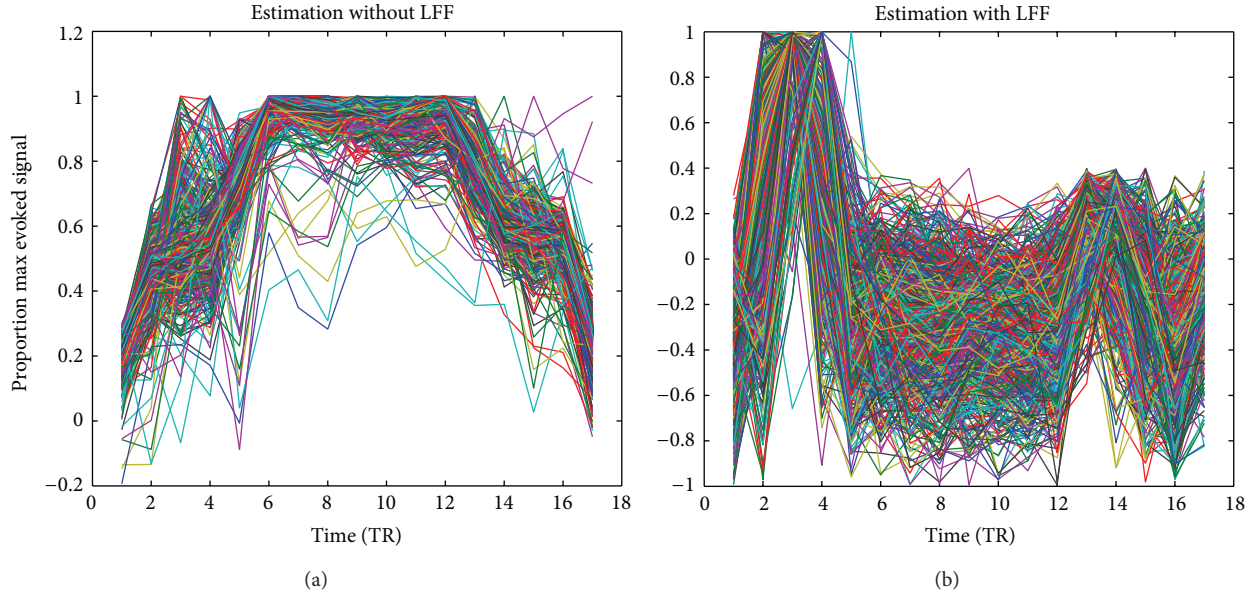


FIGURE 8: Comparison of HRF estimates with and without LFF. The lines in different colors represent the different HRF estimates of the voxels. The x -axis indicates the time relative to the event onset ($TR = 2$ s), and the y -axis indicates the BOLD signal. Each HRF estimate was normalized by dividing it by its maximum value.

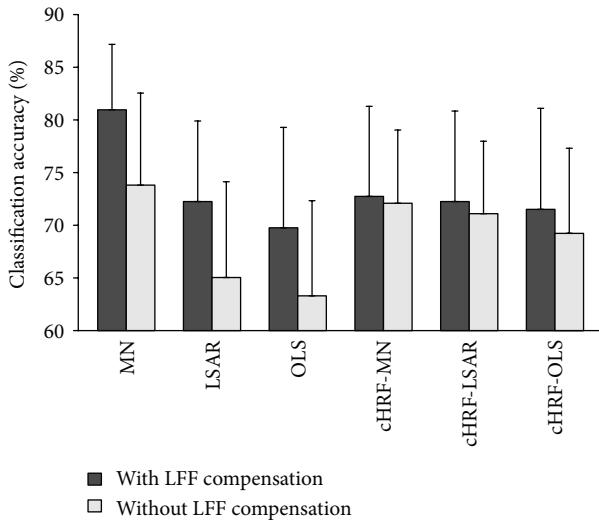


FIGURE 9: Comparison of classification accuracies with and without the LFF compensation component. Classification accuracies estimated with fivefold leave-one-out cross-validation. Each method was applied to both models with and without LFF data to investigate the impact of LFF. cHRF-MN, canonical HRF with voxels selected by MN; cHRF-LSAR, canonical HRF with voxels selected by LSAR; and cHRF-OLS, canonical HRF with voxels selected by OLS. Error bars show the standard error of the mean classification accuracy across subjects.

4. Conclusions

In this paper, we propose a new HRF estimation method that uses Tikhonov regularization and additional shape regularization term to address the HRF estimation problem in

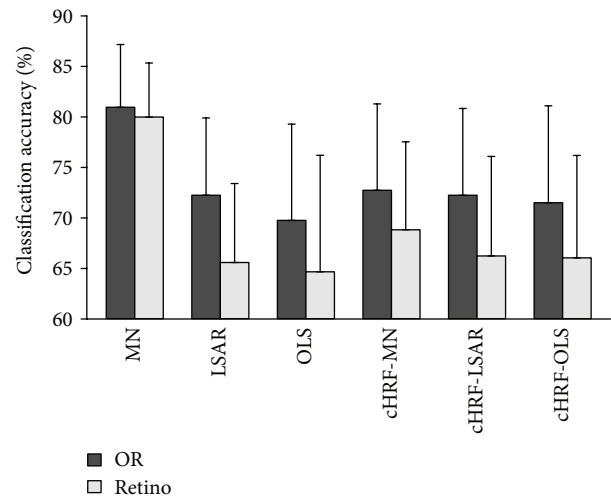


FIGURE 10: Comparison of classification accuracies in object responsive (OR) or early visual areas. OR voxels were strongly activated in localizer runs (t -test, $P = 0.005$, family-wise error corrected). Retinvoxels were located in the early visual area, which was delineated via retinotopic mapping analysis. Classification accuracies estimated with fivefold leave-one-out cross-validation. cHRF-MN, canonical HRF with voxels selected by MN; cHRF-LSAR, canonical HRF with voxels selected by LSAR; and cHRF-OLS, canonical HRF with voxels selected by OLS. Error bars show the standard error of the mean classification accuracy across subjects.

rapid event-related experiments and suppress the overlapping of adjacent events. To test its performance, we applied this method to four-category object classification data. The results showed a significant improvement in classification performance, which proved that the new MN regularization HRF

estimation method was more efficient than the others. Some essential issues in MVPA were also discussed in this paper, including the role of LFF in response estimation, the effect of data smoothing, and the differences in the classification accuracy between OR voxels and retinvoxels. Based on this work, we conclude that LFF compensation is necessary in MVPA analysis and that smoothing is an alternative. Moreover, spatially distributed information should be considered to obtain the best classification performance.

Acknowledgment

This work is supported by the National High Technology Research and Development Program of China (no. 2012AA011603).

References

- [1] J. V. Haxby, M. I. Gobbini, M. L. Furey, A. Ishai, J. L. Schouten, and P. Pietrini, "Distributed and overlapping representations of faces and objects in ventral temporal cortex," *Science*, vol. 293, no. 5539, pp. 2425–2430, 2001.
- [2] Y. Kamitani and F. Tong, "Decoding the visual and subjective contents of the human brain," *Nature Neuroscience*, vol. 8, no. 5, pp. 679–685, 2005.
- [3] K. N. Kay, T. Naselaris, R. J. Prenger, and J. L. Gallant, "Identifying natural images from human brain activity," *Nature*, vol. 452, no. 7185, pp. 352–355, 2008.
- [4] T. Naselaris, R. J. Prenger, K. N. Kay, M. Oliver, and J. L. Gallant, "Bayesian reconstruction of natural images from human brain activity," *Neuron*, vol. 63, no. 6, pp. 902–915, 2009.
- [5] K. J. Friston, O. Josephs, G. Rees, and R. Turner, "Nonlinear event-related responses in fMRI," *Magnetic Resonance in Medicine*, vol. 39, no. 1, pp. 41–52, 1998.
- [6] K. J. Friston, P. Jezzard, and R. Turner, "Analysis of functional MRI time-series," *Human Brain Mapping*, vol. 1, no. 2, pp. 153–171, 1993.
- [7] J. J. Riera, J. Watanabe, I. Kazuki et al., "A state-space model of the hemodynamic approach: nonlinear filtering of BOLD signals," *NeuroImage*, vol. 21, no. 2, pp. 547–567, 2004.
- [8] M. Lindquist and T. Wager, "Modeling the hemodynamic response function using inverse logit functions," in *Proceedings of the Human Brain Mapping Annual Meeting*, 2005.
- [9] E. Formisano, F. de Martino, and G. Valente, "Multivariate analysis of fMRI time series: classification and regression of brain responses using machine learning," *Magnetic Resonance Imaging*, vol. 26, no. 7, pp. 921–934, 2008.
- [10] M. M. Monti, "Statistical analysis of fMRI time-series: a critical review of the GLM approach," *Frontiers in Human Neuroscience*, vol. 5, article 28, 2011.
- [11] A. M. Wink, H. Hoogduin, and J. B. T. M. Roerdink, "Data-driven haemodynamic response function extraction using Fourier-wavelet regularised deconvolution," *BMC Medical Imaging*, vol. 8, article 7, 2008.
- [12] T. Zhang, F. Li, L. Beckes, C. Brown, and J. A. Coan, "Nonparametric inference of the hemodynamic response using multi-subject fMRI data," *NeuroImage*, vol. 63, no. 3, pp. 1754–1765, 2012.
- [13] J. A. Mumford, B. O. Turner, F. G. Ashby, and R. A. Poldrack, "Deconvolving BOLD activation in event-related designs for multivoxel pattern classification analyses," *NeuroImage*, vol. 59, no. 3, pp. 2636–2643, 2012.
- [14] G. M. Boynton, S. A. Engel, and D. J. Heeger, "Linear systems analysis of the fMRI signal," *NeuroImage*, vol. 62, no. 2, pp. 975–984, 2012.
- [15] M. W. Woolrich, T. E. J. Behrens, and S. M. Smith, "Constrained linear basis sets for HRF modelling using Variational Bayes," *NeuroImage*, vol. 21, no. 4, pp. 1748–1761, 2004.
- [16] G. K. Aguirre, E. Zarahn, and M. D'Esposito, "The variability of human, BOLD hemodynamic responses," *NeuroImage*, vol. 8, no. 4, pp. 360–369, 1998.
- [17] A. M. Dale, "Optimal experimental design for event-related fMRI," *Human Brain Mapping*, vol. 8, pp. 109–114, 1999.
- [18] A. M. Smith, B. K. Lewis, U. E. Ruttimann et al., "Investigation of low frequency drift in fMRI signal," *NeuroImage*, vol. 9, no. 5, pp. 526–533, 1999.
- [19] J. Tanabe, D. Miller, J. Tregellas, R. Freedman, and F. G. Meyer, "Comparison of detrending methods for optimal fMRI preprocessing," *NeuroImage*, vol. 15, no. 4, pp. 902–907, 2002.
- [20] C. Chu, J. Mourão-Miranda, Y. C. Chiu, N. Kriegeskorte, G. Tan, and J. Ashburner, "Utilizing temporal information in fMRI decoding: classifier using kernel regression methods," *NeuroImage*, vol. 58, no. 2, pp. 560–571, 2011.
- [21] K. N. Kay, S. V. David, R. J. Prenger, K. A. Hansen, and J. L. Gallant, "Modeling low-frequency fluctuation and hemodynamic response timecourse in event-related fMRI," *Human Brain Mapping*, vol. 29, no. 2, pp. 142–156, 2008.
- [22] C. Goutte, F. A. Nielsen, and L. K. Hansen, "Modeling the haemodynamic response in fMRI using smooth FIR filters," *IEEE Transactions on Medical Imaging*, vol. 19, no. 12, pp. 1188–1201, 2000.
- [23] V. A. Vakorin, R. Borowsky, and G. E. Sarty, "Characterizing the functional MRI response using Tikhonov regularization," *Statistics in Medicine*, vol. 26, no. 21, pp. 3830–3844, 2007.
- [24] R. Casanova, L. Yang, W. D. Hairston, P. J. Laurienti, and J. A. Maldjian, "Evaluating the impact of spatio-temporal smoothness constraints on the BOLD hemodynamic response function estimation: an analysis based on Tikhonov regularization," *Physiological Measurement*, vol. 30, no. 5, pp. N37–N51, 2009.
- [25] R. Casanova, S. Ryali, J. Serences et al., "The impact of temporal regularization on estimates of the BOLD hemodynamic response function: a comparative analysis," *NeuroImage*, vol. 40, no. 4, pp. 1606–1618, 2008.
- [26] J. Belliveau, T. Brady, B. Rosen, and R. Tootell, "Borders of multiple visual areas in humans revealed by functional magnetic resonance imaging," *Molecular Biology*, vol. 228, p. 619, 1992.
- [27] M. W. Woolrich, B. D. Ripley, M. Brady, and S. M. Smith, "Temporal autocorrelation in univariate linear modeling of FMRI data," *NeuroImage*, vol. 14, no. 6, pp. 1370–1386, 2001.
- [28] I. Rustandi, *Estimation of Hemodynamic Response Function in Rapid Interval Event-Related fMRI Trials*, 2004.
- [29] S. Boyd and L. Vandenberghe, *Convex Optimization*, Cambridge University Press, New York, NY, USA, 2004.
- [30] A. E. Hoerl and R. W. Kennard, "Ridge regression: biased estimation for nonorthogonal problems," *Technometrics*, vol. 12, no. 1, pp. 55–67, 1970.
- [31] P. Geladi and B. R. Kowalski, "Partial least-squares regression: a tutorial," *Analytica Chimica Acta*, vol. 185, pp. 1–17, 1986.
- [32] C. C. Chang and C. J. Lin, "LIBSVM: a library for support vector machines," *ACM Transactions on Intelligent Systems and Technology*, vol. 2, no. 3, article 27, 2011.

- [33] K. J. Friston, P. Fletcher, O. Josephs, A. Holmes, M. D. Rugg, and R. Turner, "Event-related fMRI: characterizing differential responses," *NeuroImage*, vol. 7, no. 1, pp. 30–40, 1998.
- [34] N. Kriegeskorte and P. Bandettini, "Analyzing for information, not activation, to exploit high-resolution fMRI," *NeuroImage*, vol. 38, no. 4, pp. 649–662, 2007.
- [35] P. Craven and G. Wahba, "Smoothing noisy data with spline functions—estimating the correct degree of smoothing by the method of generalized cross-validation," *Numerische Mathematik*, vol. 31, no. 4, pp. 377–403, 1978.
- [36] G. Schwarz, "Estimating the dimension of a model," *The Annals of Statistics*, vol. 6, pp. 461–464, 1978.
- [37] H. Akaike, "A new look at the statistical model identification," *IEEE Transactions on Automatic Control*, vol. 19, no. 6, pp. 716–723, 1974.
- [38] H. P. O. de Bleeck, "Against hyperacuity in brain reading: spatial smoothing does not hurt multivariate fMRI analyses?" *NeuroImage*, vol. 49, no. 3, pp. 1943–1948, 2010.
- [39] M. Mur, P. A. Bandettini, and N. Kriegeskorte, "Revealing representational content with pattern-information fMRI—an introductory guide," *Social Cognitive and Affective Neuroscience*, vol. 4, no. 1, pp. 101–109, 2009.
- [40] Y. Kamitani and Y. Sawahata, "Spatial smoothing hurts localization but not information: pitfalls for brain mappers," *NeuroImage*, vol. 49, no. 3, pp. 1949–1952, 2010.
- [41] S. Song, Z. Zhan, Z. Long, J. Zhang, and L. Yao, "Comparative study of SVM methods combined with voxel selection for object category classification on fMRI data," *PLoS ONE*, vol. 6, no. 2, Article ID e17191, 2011.
- [42] C. Cabral, M. Silveira, and P. Figueiredo, "Decoding visual brain states from fMRI using an ensemble of classifiers," *Pattern Recognition*, vol. 45, no. 6, pp. 2064–2074, 2012.
- [43] L. Reddy, N. Tsuchiya, and T. Serre, "Reading the mind's eye: decoding category information during mental imagery," *NeuroImage*, vol. 50, no. 2, pp. 818–825, 2010.
- [44] L. Reddy and N. Kanwisher, "Category selectivity in the ventral visual pathway confers robustness to clutter and diverted attention," *Current Biology*, vol. 17, no. 23, pp. 2067–2072, 2007.



Hindawi
Submit your manuscripts at
<http://www.hindawi.com>

