

# Enterprise Services Repository Content Certification Certification of Partner-delivered Enterprise Services (PdES)



SAP Integration and Certification Center  
October 2009

Public

Mustafa Saglam, Hans-Joachim Odlozinski

# Agenda



1. Enterprise Services Repository Content Certification
2. Why Partner-delivered Enterprise Services?
3. Certification Process
4. Certification Benefits

# Agenda



- ➔ 1. Enterprise Services Repository Content Certification
- 2. Why Partner-delivered Enterprise Services?
- 3. Certification Process
- 4. Certification Benefits

# What is Enterprise Services Repository Content Certification?



## NW-ESR-CNT Certification

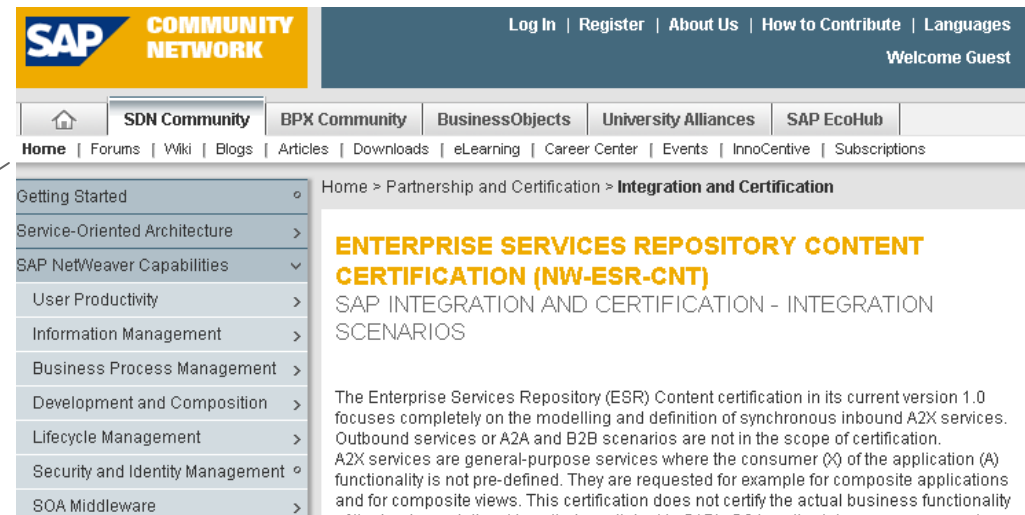
- Code named as “NW-ESR-CNT” Enterprise Services Repository (ESR) content certification intends to verify that enterprise services delivered by SAP partners and Software Solution Providers are aligned with SAP’s own SOA modeling guidelines.
- It involves verifying
  - Modeling of the services
  - Definition of the services

## ESR Content is also known as;

- Partner-developed Enterprise Services (PdES)
- Enterprise Services Provisioning

<http://tinyurl.com/pdes-cert>

[NW-ESR-CNT Page on SDN](#)



# Agenda



1. Enterprise Services Repository Content Certification

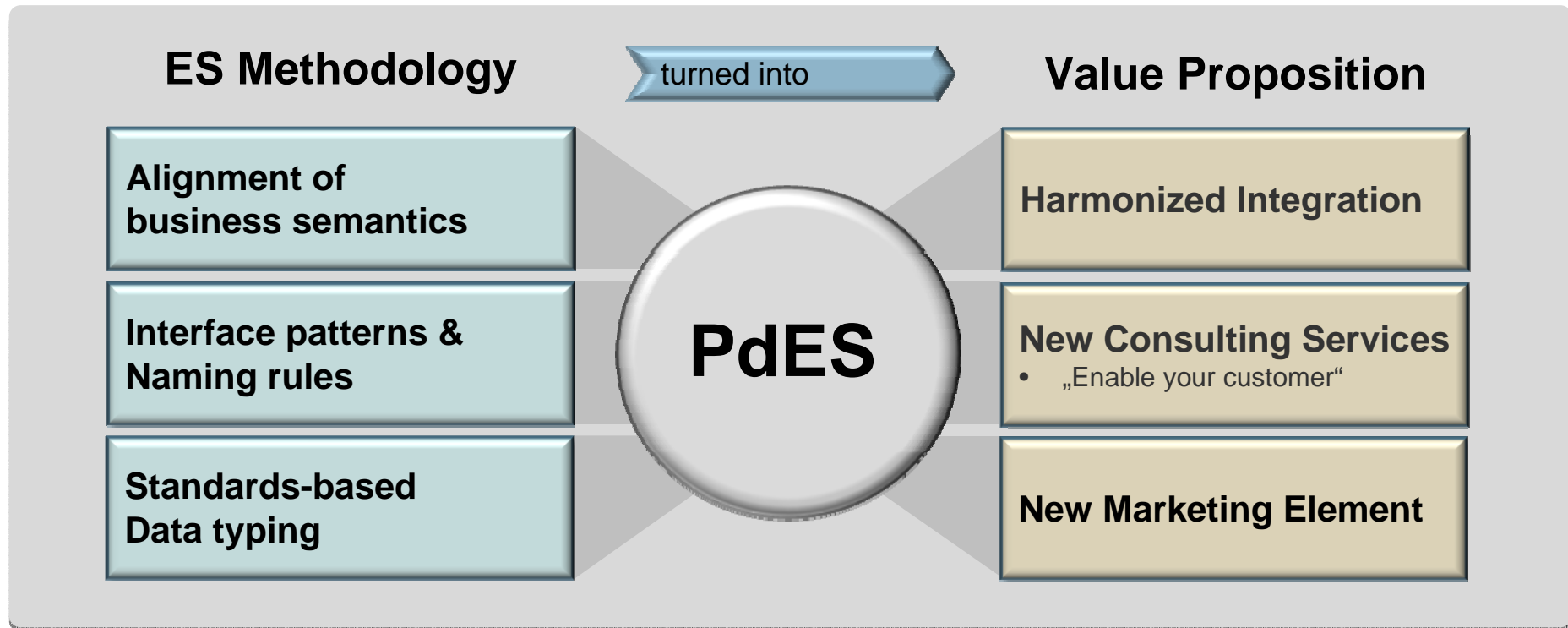


2. Why Partner-delivered Enterprise Services?

3. Certification Process

4. Certification Benefits

# Partner-delivered Enterprise Services (PdES) Value Proposition



# SAP SOA Methodology

## Key elements



### Alignment of business semantics

Harmonize the semantic view on business processes across solutions  
(SAP, customer, partner solutions)

Point of alignment: Enterprise Services Workplace

### Interface patterns and naming rules

Interface patterns:

Same categories of functionality (e.g. CRUD-like operations, queries, etc.) always bundled in same service interface type with similar naming

Clear naming rules for operations, service messages, message nodes, elements, and data types

Ensures maximum comprehensibility across SAP community

Based on UNCEFACT/ CCTS standard: Core Data Types  
[Amount, Number, Identifier, BinaryObject, etc.]

SAP has pre-defined data types with higher-level business semantics, the Global Data Types

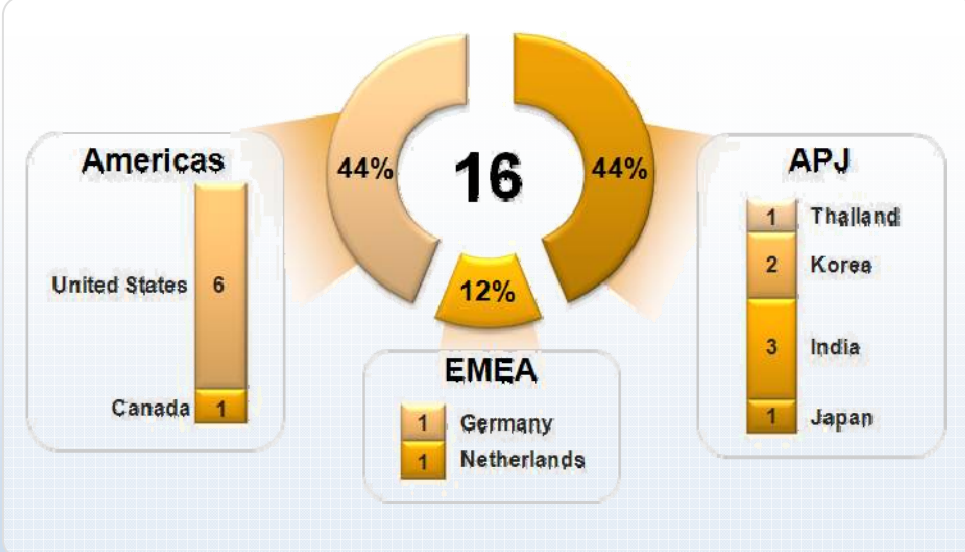
Simplify integration on the message element level

# SAP's Global Co-Innovation Lab Network

COIL in Action: Partner delivered Enterprise Services 2008



Enabling Partners around the world to successfully model, define and ultimately deliver their own SAP methodology-compliant Partner services.



## COIL Global Network

- |              |   |
|--------------|---|
| Project Type | <ul style="list-style-type: none"> <li>Adoption Initiative</li> <li>Application</li> </ul>      |
| Deliverables | <ul style="list-style-type: none"> <li>'PdES Wiki' on SDN</li> <li>Partner Solutions</li> </ul> |

*"B-EN-G, together with COIL Tokyo, realizes the best functionalities to fulfill the needs of markets. Through this collaboration, B-EN-G has developed a partner-delivered Enterprise Service for better operations of modern Global Logistics to realize flexible, visible, efficient, and easily controlled dashboard functionalities for the most complex SCM processes of today's global trade arena."*

Kiyoshi Masubuchi  
Executive Officer  
Business Innovation Div.  
Toyo Business Engineering  
Corp. (B-EN-G)





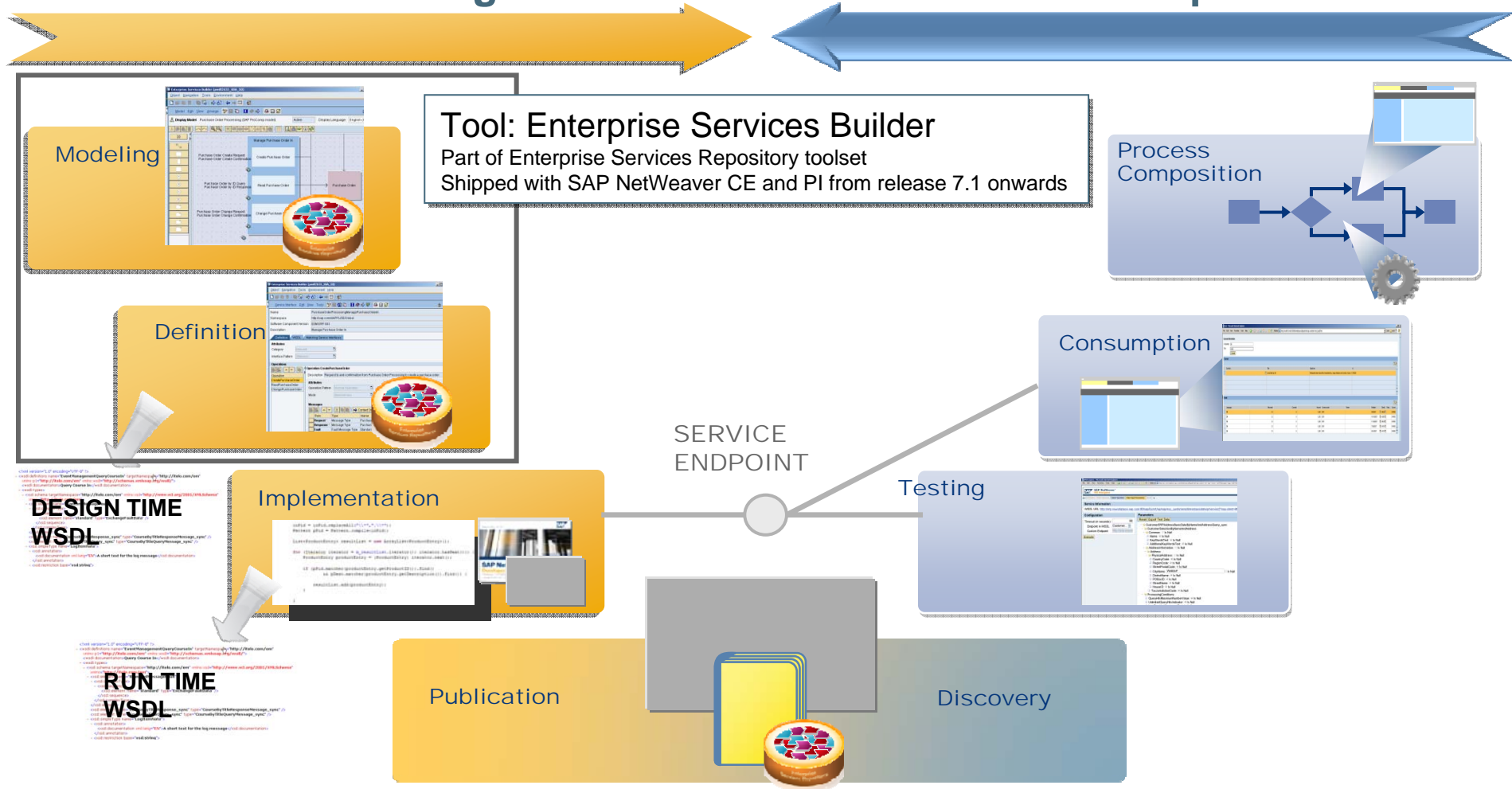
# Providing and Consuming Enterprise Services

## Process Overview



### Provisioning

### Consumption



# Service Modeling

## Key elements I



### Business Object

Identify the **main entities** in your solution's business domain

**Name and define** entities **appropriately and clearly!**

Business Objects should be seen as a part of your **solution data model**

Point of alignment with SAP: Enterprise Services Workplace  
**Re-use where appropriate! Define new where necessary!**



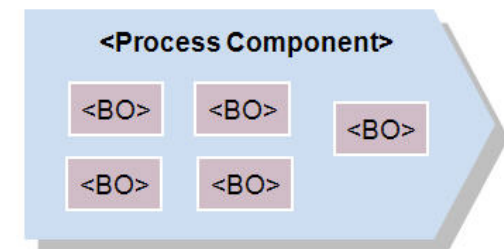
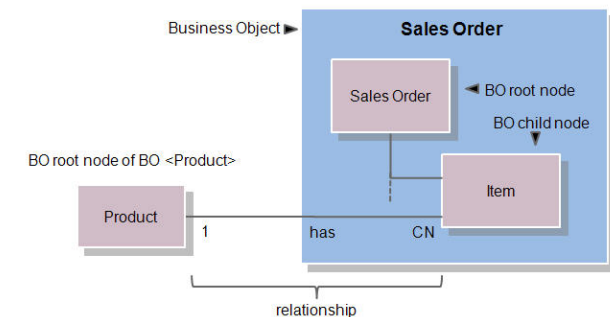
### Process Component

**Groups business objects** in your solution's business domain

**Name appropriately and clearly!**

If SAP business object is re-used, embedding SAP process component must be re-used as well!

Point of alignment with SAP: Enterprise Services Workplace  
**Re-use where appropriate! Define new where necessary!**



# Service Modeling

## Key elements II



### Operations

Business functionality operating on one defined business object, parts of it and/or related clearly related business objects

Identify the **functionality** you want to expose!

**Name and define** entities **appropriately and clear** based on **naming rules!**

Only **synchronous A2X operations** are certified

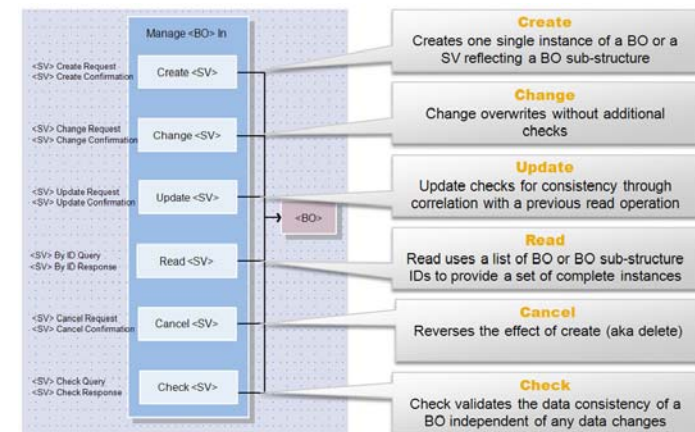
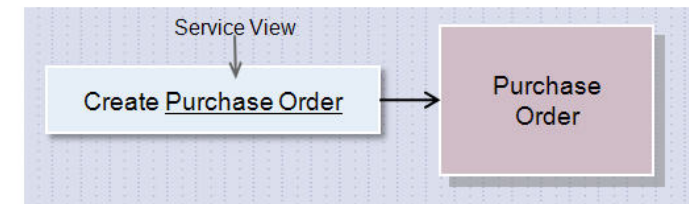
**Groups operations** for one business object according to well-defined **interface patterns**

**Names are derived, not freely chosen!**

### Message Types

**Reflect** messages exchanged during an operation call

**Names are derived, not freely chosen!**



## Procedure

For each modeled service interface a **service definition** is created

Service Definition corresponds directly to **design time WSDL**

Each modeled message type corresponds directly to a message in the design time WSDL

Structure and elements of exchanged message types are defined according to scenario requirements

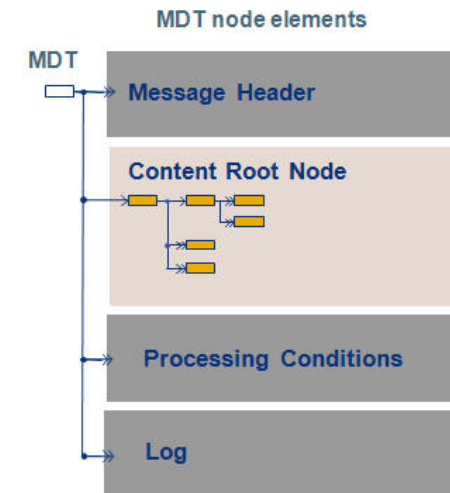
## Message Elements and Data Types

Clear naming and typing rules based on **UNCEFACT/CCTS** standard as well as **SAP Global Data Types**

Global Data Types are SAP-defined data type templates based on standard **Core Data Types** (Amount, Number, Image, ...)

**Re-use where appropriate! Define new data types where necessary!**

Your own data types are referred to as **Business Data Types**



International  
Organization for  
Standardization

ISO 15000-5 2006  
(CCTS)

# Define your own services

## Elements of Success



Have a look at our **[Blog Series: Partner-delivered Enterprise Services](#)**

**Gain knowledge** by visiting SAP education course **[SOA300](#)**!  
[Part of Curriculum: Enterprise Service Development]

**Get a feel for SAP ES Workplace:** <http://esworkplace.sap.com>

**Invest 80% into modeling!**

Service Definition is largely derived by clear naming rules.

Align with SAP ES Workplace! Re-use!

Bring business process experts and solution experts to the table.

**The better your naming and your entity definitions, the better the quality of your service!**

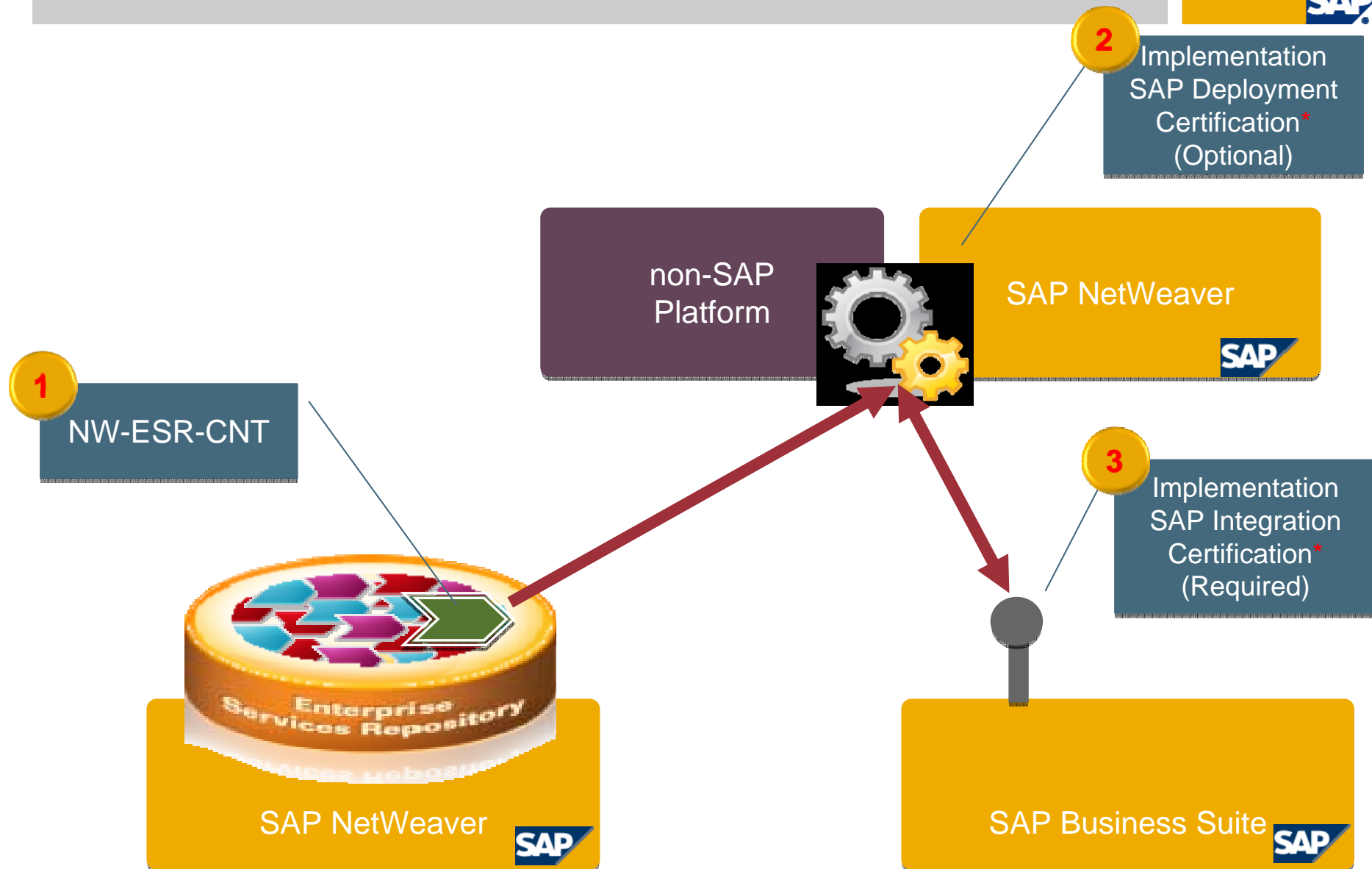
[Please note as well: Your modeling content will also be published by SAP so it will be an advertisement for your solution!]

# Agenda



1. Enterprise Services Repository Content Certification
2. Why Partner-delivered Enterprise Services?
- ➔ 3. Certification Process
4. Certification Benefits

# Certifications relevant to PdES



\*: Where applicable

# Pre-requisites for NW-ESR-CNT Certification



## Required SAP tools

- Enterprise Services Repository
  - Enterprise Services Builder

## Required SAP software

- SAP NetWeaver Composition Environment (CE) 7.1 (or higher) or
- SAP NetWeaver Process Integration (PI) 7.1 (or higher)

## Required SAP software licenses

- SAP NetWeaver Developer User License
  - 2100 EUR per user
- SAP Enterprise Service Provisioning License
  - No additional fee



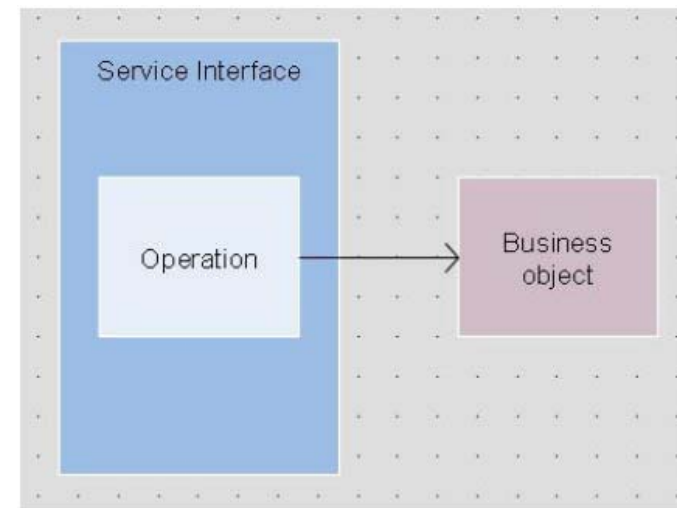


## Software Landscape Directory (SLD)

- Partner product and software component should be defined in SAP SLD

## Development of the Content

- Modeling content
  - All artifacts are modeled within Process Component Model using the ES Builder
- Definition of content
  - Service definitions (WSDLs) are generated based on the modeled content



## Implementation

- While the details of the implementation is outside the scope of NW-ESR-CNT certification, implementation must meet some general requirements
- Depending on the implementation platform following certifications are strongly suggested
  - [SAP J2EE/Java EE Deployment](#) certification
  - [SAP ABAP](#) certification



## Integration with SAP Solutions

- If the implementation of the delivered ES integrate with SAP solutions (e.g. SAP ERP, CRM, SRM, PLM, etc.), associated SAP interface of the implementation is required to be certified

## Documentation

- Documentation of the Process Component Models
- Consumption document for each enterprise service operation delivered
- Installation and configuration guide

## Deployment of the ESR Content

- ESR content should be deployed using ES builder successfully

## Functional Testing

- Functionality of the delivered services will be tested based on a mutually agreed test plan

## Support and Solution Manager Integration

- Partner should provide support for their enterprise services
- Documenting partner's ES in SAP's Product and Production Management System is sufficient to achieve "SAP Solution Manager Ready" compliance



## Certification fee

- 7,000 USD (for Americas and Japan), 5,000 Euros (for all other countries).



## Certified ESR Content (PdES) will receive the certification logo

- **SAP<sup>®</sup> Certified**  
Integration via Enterprise Services

## Certified ESR Content (PdES) is listed on several SAP web sites

- Partner Information Center
  - Customers can search for certified solutions and provider companies
- SAP EcoHub – The online marketplace in the ecosystem for SAP partner solutions
  - <http://ecohub.sap.com>
- Certified Solutions page on SDN

The screenshot shows the 'ENTERPRISE SERVICES REPOSITORY CONTENT CERTIFICATION' page. It features an introduction to the NW-ESR-CNT interface and a table of certified solutions. The table lists two solutions: COACH (Groupware Integration) 2.1 by CONET Solutions GmbH and MegaXML/ESP 3.5 by Task Performance Group, Inc. The page also includes a SAP Certified logo and a footer with navigation links.

Company	Solution
	<b>COACH (Groupware Integration) 2.1 by CONET Solutions GmbH</b> CONET Coach integrates existing collaboration solutions (MS Exchange, Lotus Notes) with SAP NetWeaver, so that the processes within the SAP Business Suite can be optimized by using the functionalities of e-mail and calendaring provided by the groupware, e.g., process-driven assignment of incoming e-mail directly to SAP CRM. [Certification valid until: 2012-08-30]
	<b>MegaXML/ESP 3.5 by Task Performance Group, Inc.</b> The Electronic Document Delivery Status Monitoring & Reporting solution MegaXML/ESP by Task Performance Group, Inc. tracks all electronic documents provided by SAP and processed through its pipeline. [Certification valid until: 2012-04-23]

# Agenda



1. Enterprise Services Repository Content Certification
2. Why Partner-delivered Enterprise Services?
3. Certification Process
- ➔ 4. Certification Benefits



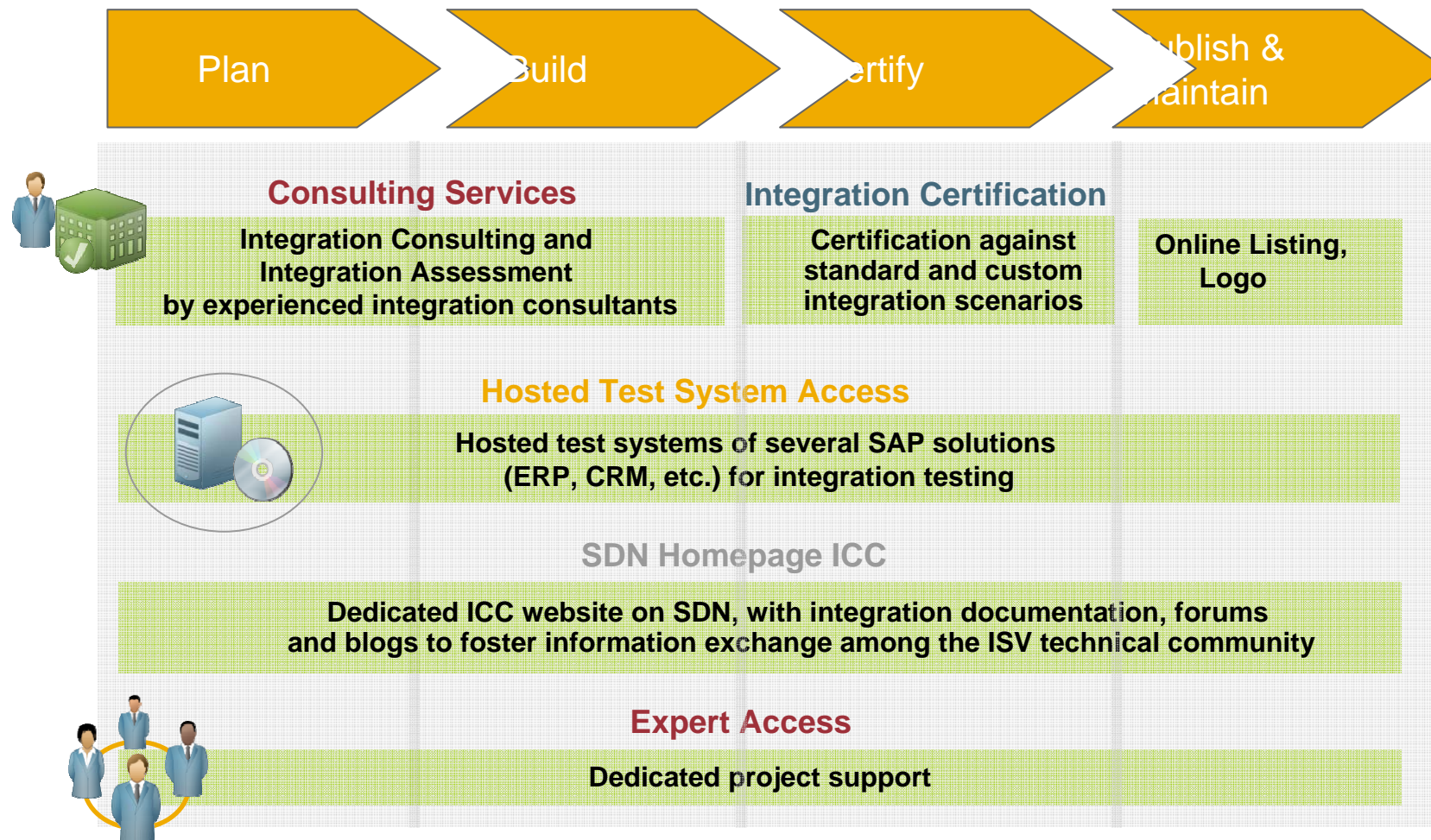
Contact [icc@sap.com](mailto:icc@sap.com) or visit our [Homepage on SDN](http://tinyurl.com/sapicc)

- Established in 1996
- 15 - 20 consultants worldwide in 5 locations
- > 1850 valid certifications
- > 800 companies
- > 130 defined integration scenarios and additional integration options
- Supports ISVs and all companies interested in joining SAP PartnerEdge

<http://tinyurl.com/sapicc>



# SAP Integration and Certification Center Services



# Integration Certification Branding



**SAP** Certified  
Integration with SAP Applications

**SAP** Certified  
Powered by SAP NetWeaver

**SAP** Certified  
Integration via Enterprise Services

**SAP** Certified  
Integration with SAP NetWeaver

**SAP** Certified  
SAP Business One Integration

**SAP**<sup>®</sup> Certified  
Integration with SAP BusinessObjects

**One Consistent Master Brand** to harmonize and unify branding, and to avoid the past confusion caused by several logos and taglines

**Six Intuitive Descriptors** to highlight integration areas, and to provide transparency to customers, what each integration certification stands for

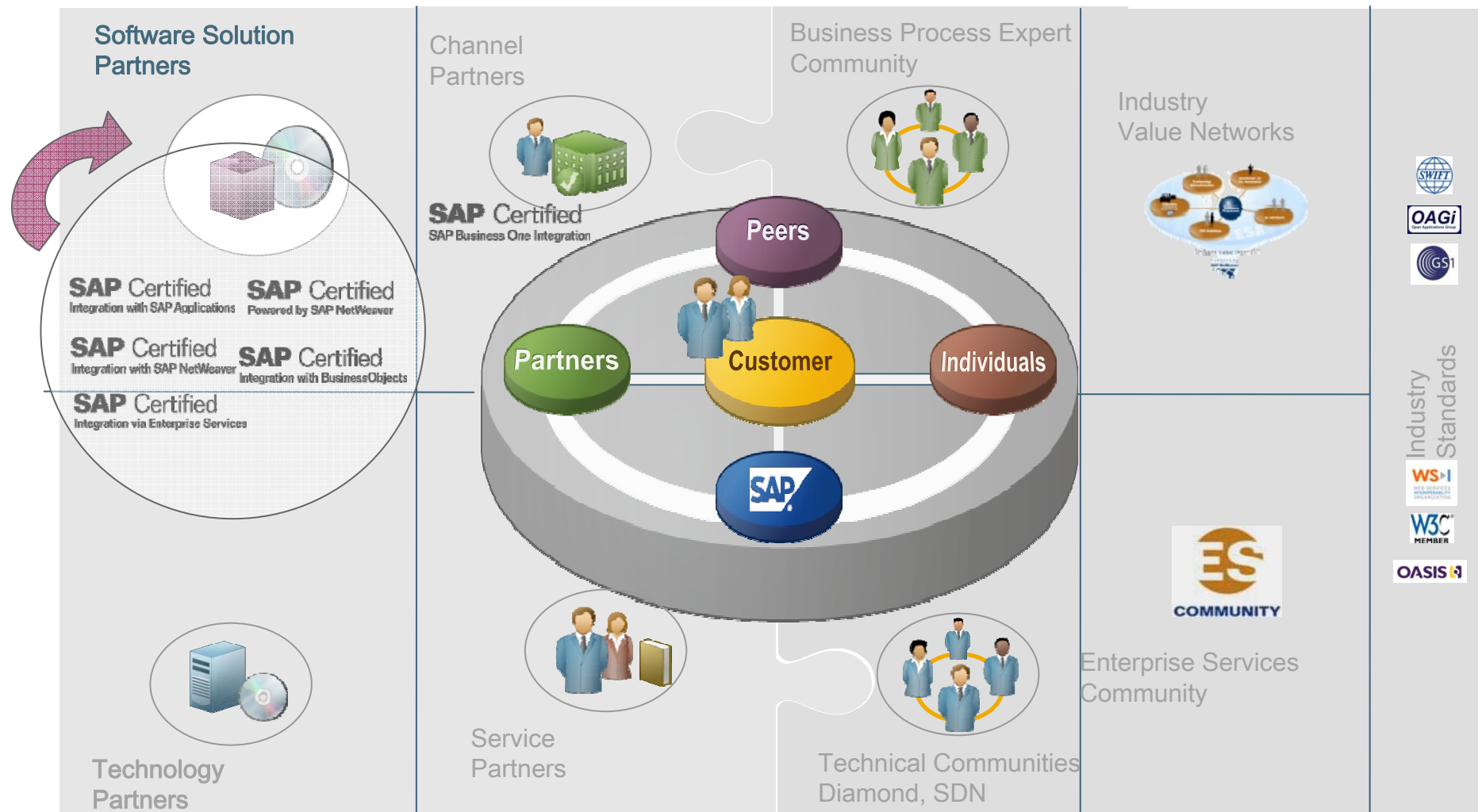
**Equal Positioning** of all certifications regardless of logo, as all certifications represent a value-add to customers

# Integration Certification within the SAP Ecosystem



Trusted and Relevant Partner  
Solutions and Services

Communities of Innovation





# Benefits of SAP Integration Certification



... to CUSTOMERS

## Enhance Return on Investment

- Reduce integration costs with pre-certified solutions for SAP applications
- Decrease deployment risks for solutions running on SAP NetWeaver with SAP endorsed technologies
- Aim for minimal interruption during software upgrades

## Offer Choice

- of 3rd party solutions which either extend SAP functionality and/or run on SAP NetWeaver

## Reduce Downtime

- SAP Solution Manager Ready integration testing
- Regular re-certifications

## Provide Transparency

- New logos clearly document technical integration area

## Accelerate Innovation

- Upgrade to new technologies together with your partners



... to PARTNERS and ISVs

## Opportunity for Growth and Participation

- Entry point to participate in **SAP PartnerEdge**
- Faster sales cycles with proven SAP integration

## Marketing Benefits

- Logo
- Online listings
- PR Reviews and basic awareness tools
- Eligibility for EcoHub

Join SAP PartnerEdge to augment the benefits you can gain from certification





# Contact

Mustafa Saglam

SAP Labs, LLC  
3412 Hillview Avenue  
Palo Alto, CA 94304

T +1 650 849-3940

F +1 650 849-4009

mustafa.saglam@sap.com

[www.sap.com](http://www.sap.com)



Thank you!



No part of this publication may be reproduced or transmitted in any form or for any purpose without the express permission of SAP AG. The information contained herein may be changed without prior notice.

Some software products marketed by SAP AG and its distributors contain proprietary software components of other software vendors.

Microsoft, Windows, Excel, Outlook, and PowerPoint are registered trademarks of Microsoft Corporation.

IBM, DB2, DB2 Universal Database, System i, System i5, System p, System p5, System x, System z, System z10, System z9, z10, z9, iSeries, pSeries, xSeries, zSeries, eServer, z/VM, z/OS, i5/OS, S/390, OS/390, OS/400, AS/400, S/390 Parallel Enterprise Server, PowerVM, Power Architecture, POWER6+, POWER6, POWER5+, POWER5, POWER, OpenPower, PowerPC, BatchPipes, BladeCenter, System Storage, GPFS, HACMP, RETAIN, DB2 Connect, RACF, Redbooks, OS/2, Parallel Sysplex, MVS/ESA, AIX, Intelligent Miner, WebSphere, Netfinity, Tivoli and Informix are trademarks or registered trademarks of IBM Corporation.

Linux is the registered trademark of Linus Torvalds in the U.S. and other countries.

Adobe, the Adobe logo, Acrobat, PostScript, and Reader are either trademarks or registered trademarks of Adobe Systems Incorporated in the United States and/or other countries.

Oracle is a registered trademark of Oracle Corporation.

UNIX, X/Open, OSF/1, and Motif are registered trademarks of the Open Group.

Citrix, ICA, Program Neighborhood, MetaFrame, WinFrame, VideoFrame, and MultiWin are trademarks or registered trademarks of Citrix Systems, Inc.

HTML, XML, XHTML and W3C are trademarks or registered trademarks of W3C®, World Wide Web Consortium, Massachusetts Institute of Technology.

Java is a registered trademark of Sun Microsystems, Inc.

JavaScript is a registered trademark of Sun Microsystems, Inc., used under license for technology invented and implemented by Netscape.

SAP, R/3, SAP NetWeaver, Duet, PartnerEdge, ByDesign, SAP Business ByDesign, and other SAP products and services mentioned herein as well as their respective logos are trademarks or registered trademarks of SAP AG in Germany and other countries.

Business Objects and the Business Objects logo, BusinessObjects, Crystal Reports, Crystal Decisions, Web Intelligence, Xcelsius, and other Business Objects products and services mentioned herein as well as their respective logos are trademarks or registered trademarks of Business Objects S.A. in the United States and in other countries. Business Objects is an SAP company.

All other product and service names mentioned are the trademarks of their respective companies. Data contained in this document serves informational purposes only. National product specifications may vary.

These materials are subject to change without notice. These materials are provided by SAP AG and its affiliated companies ("SAP Group") for informational purposes only, without representation or warranty of any kind, and SAP Group shall not be liable for errors or omissions with respect to the materials. The only warranties for SAP Group products and services are those that are set forth in the express warranty statements accompanying such products and services, if any. Nothing herein should be construed as constituting an additional warrant.