



How-to Guide
SAP NetWeaver '04

How To... Use the BI Java SDK in a J2EE Application

Version 1.01 – July 2005

Applicable Releases:
SAP NetWeaver '04

© Copyright 2004-2005 SAP AG. All rights reserved.

No part of this publication may be reproduced or transmitted in any form or for any purpose without the express permission of SAP AG. The information contained herein may be changed without prior notice.

Some software products marketed by SAP AG and its distributors contain proprietary software components of other software vendors.

Microsoft, Windows, Outlook, and PowerPoint are registered trademarks of Microsoft Corporation.

IBM, DB2, DB2 Universal Database, OS/2, Parallel Sysplex, MVS/ESA, AIX, S/390, AS/400, OS/390, OS/400, iSeries, pSeries, xSeries, zSeries, z/OS, AFP, Intelligent Miner, WebSphere, Netfinity, Tivoli, and Informix are trademarks or registered trademarks of IBM Corporation in the United States and/or other countries.

Oracle is a registered trademark of Oracle Corporation.

UNIX, X/Open, OSF/1, and Motif are registered trademarks of the Open Group.

Citrix, ICA, Program Neighborhood, MetaFrame, WinFrame, VideoFrame, and MultiWin are trademarks or registered trademarks of Citrix Systems, Inc.

HTML, XML, XHTML and W3C are trademarks or registered trademarks of W3C®, World Wide Web Consortium, Massachusetts Institute of Technology.

Java is a registered trademark of Sun Microsystems, Inc.

JavaScript is a registered trademark of Sun Microsystems, Inc., used under license for technology invented and implemented by Netscape.

MaxDB is a trademark of MySQL AB, Sweden.

contained in this document serves informational purposes only. National product specifications may vary.

These materials are subject to change without notice. These materials are provided by SAP AG and its affiliated companies ("SAP Group") for informational purposes only, without representation or warranty of any kind, and SAP Group shall not be liable for errors or omissions with respect to the materials. The only warranties for SAP Group products and services are those that are set forth in the express warranty statements accompanying such products and services, if any. Nothing herein should be construed as constituting an additional warranty.

These materials are provided "as is" without a warranty of any kind, either express or implied, including but not limited to, the implied warranties of merchantability, fitness for a particular purpose, or non-infringement. SAP shall not be liable for damages of any kind including without limitation direct, special, indirect, or consequential damages that may result from the use of these materials. SAP does not warrant the accuracy or completeness of the information, text, graphics, links or other items contained within these materials. SAP has no control over the information that you may access through the use of hot links contained in these materials and does not endorse your use of third party web pages nor provide any warranty whatsoever relating to third party web pages. SAP NetWeaver "How-to" Guides are intended to simplify the product implementation. While specific product features and procedures typically are explained in a practical business context, it is not implied that those features and procedures are the only approach in solving a specific business problem using SAP NetWeaver. Should you wish to receive additional information, clarification or support, please refer to SAP Consulting. Any software coding and/or code lines / strings ("Code") included in this documentation are only examples and are not intended to be used in a productive system environment. The Code is only intended better explain and visualize the

SAP, R/3, mySAP, mySAP.com, xApps, xApp, SAP NetWeaver, and other SAP products and services mentioned herein as well as their respective logos are trademarks or registered trademarks of SAP AG in Germany and in several other countries all over the world. All other product and service names mentioned are the trademarks of their respective companies.

Data

syntax and phrasing rules of certain coding. SAP does not warrant the correctness and completeness of the Code given herein, and SAP shall not be liable for errors or damages caused by the usage of the Code, except if such damages were caused by SAP intentionally or grossly negligent.

1 Scenario

You want to build a Java application that performs analytics on data in an XMLA provider and displays this data in a J2EE application deployed to the Web Application Server. You use the BI Java SDK to custom build this application and you establish the connection with the BI XMLA Connector. All you need for this scenario is included in SAP NetWeaver '04.

2 Introduction

This document provides detailed instructions on how to use the BI Java SDK and its BI Java Connectors in a J2EE application. It contains step-by-step instructions for creating a servlet that uses the BI XMLA Connector to connect to a BW system.

In this document, we focus on the procedure for establishing a connection in the J2EE environment. After you establish this connection, refer to the tutorials and documentation for the BI Java SDK to expand upon your scenarios.

Although the screenshots in this document depict the process using the SAP NetWeaver Developer Studio, note that you can use the Java development tool of your choice to create the sample servlet.

3 The Step By Step Solution

In the first section below you prepare your system, and in the second section you create your servlet.

3.1 Prepare the System

To prepare the system, you first look up the JNDI name of your connector in the J2EE Visual Administrator, and then configure the connection properties.

In this example, we use the BI XMLA Connector to connect to an SAP BW system and retrieve a list of schemas.

Use the J2EE Visual Administrator to determine the JNDI name of the BI XMLA Connector:

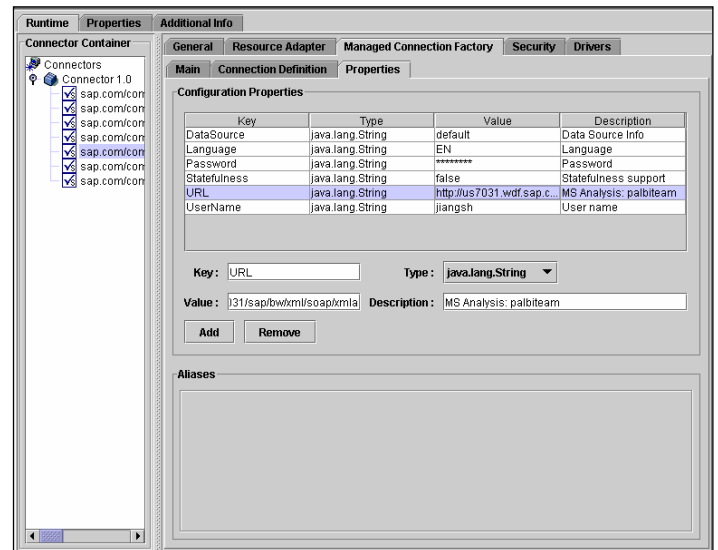
1. Select <server node> → *Services* → *Connector Container*.
2. On the *Runtime* tab, in the *Connector Container* section, locate the entry for the BI XMLA Connector, `sap.com/com.sap.ip.bi.sdk.dac.connector.xmla.BI_SDK_XMLA`, and double-click it to open the connector definition.
3. Select *Managed Connection Factory* → *Connection Definition* and locate the JNDI name in the *Connector JNDI name* field.

For the BI XMLA Connector, this is `SDK_XMLA`.

Configure the connection properties using the J2EE Visual Administrator:

4. Still in on the *Managed Connection Factory* tab, select the *Properties* tab and set the required connection properties as shown to the right.

Refer to the documentation for the BI XMLA Connector in its `howto.html` file or in the BW Installation Guide for information on the properties.

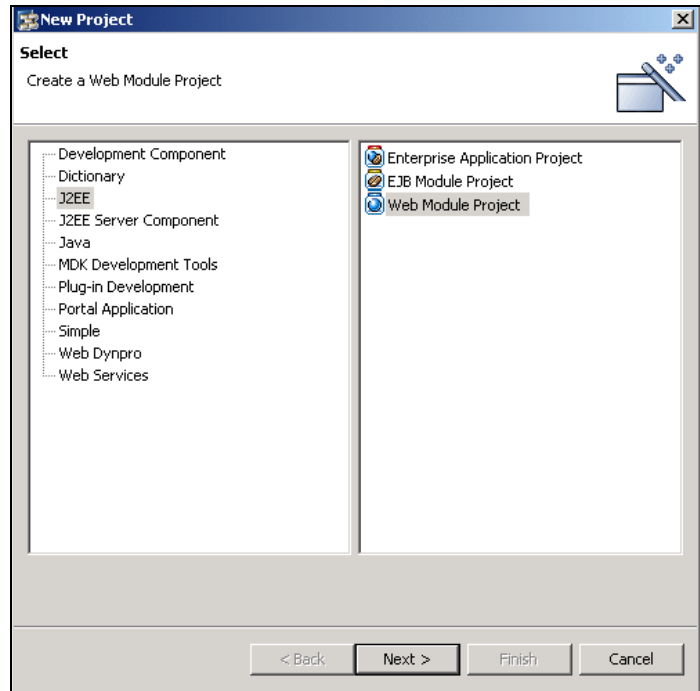


Property	Setting
DataSource	default
Statefulness	false
Language	EN
Password	(password)
UserName	(username)
URL	http://server:port/sap/bw/xml/soap/xmla

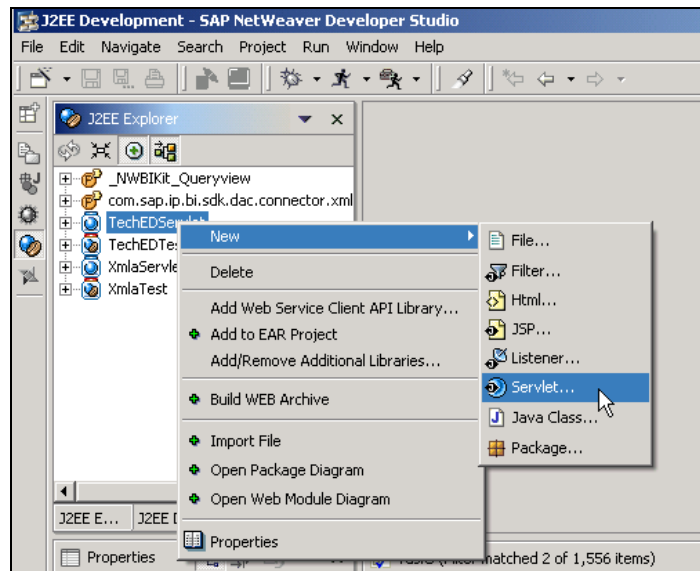
5. Save the settings.

3.2 Create the Sample Servlet

6. In the SAP NetWeaver Developer Studio, use the *New Project* wizard to create a Web Module Project.

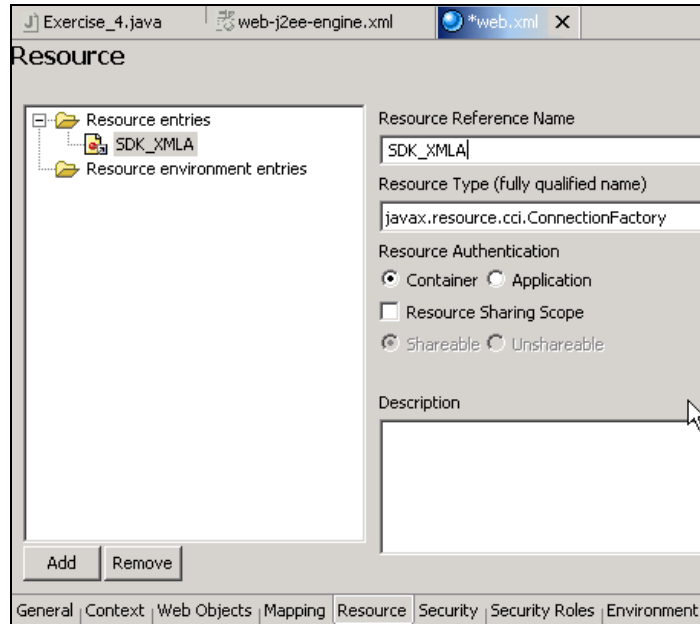


7. In the *J2EE Explorer*, right-click on the new Web Module project, and select *New* → *Servlet* from the context menu to create a new servlet component.



Edit the servlet's web.xml file to add a resource reference to the BI XMLA Connector:

8. In the J2EE Explorer, double-click the web.xml file listed under your Web Module project, and select the *Resource* tab.
9. In the *Resource Reference Name* field, enter the JNDI name for your connector (see Step 3, above).
10. From the *Resource Type* drop-down list, select *javax.resource.cci.ConnectionFactory*.



11. In the servlet's source code, look up the XMLA Connection Factory by its JNDI name, and establish the connection using the default connection properties. Use the code below to get connection and retrieve schemas.

Note: The BI Java SDK libraries are required to compile this scenario, and can be found in *<your NetWeaver Developer Studio installation folder>\eclipse\tools\bi_sdk\bi_sdk.zip*, or can be downloaded from the SAP Developer Network at <http://www.sdn.sap.com/>.

```

IConnectionFactory connectionFactory = null;
IConnectionSpec connectionSpec = null;
IBIConnection connection = null;

Context initctx = new InitialContext();

// perform JNDI lookup to obtain connection factory
connectionFactory =
    (IConnectionFactory) initctx.lookup(
        "java:comp/env/" + "SDK_XMLA");

// get connection using default connection properties
connection =
    (IBIConnection) connectionFactory.getConnectionEx(null);

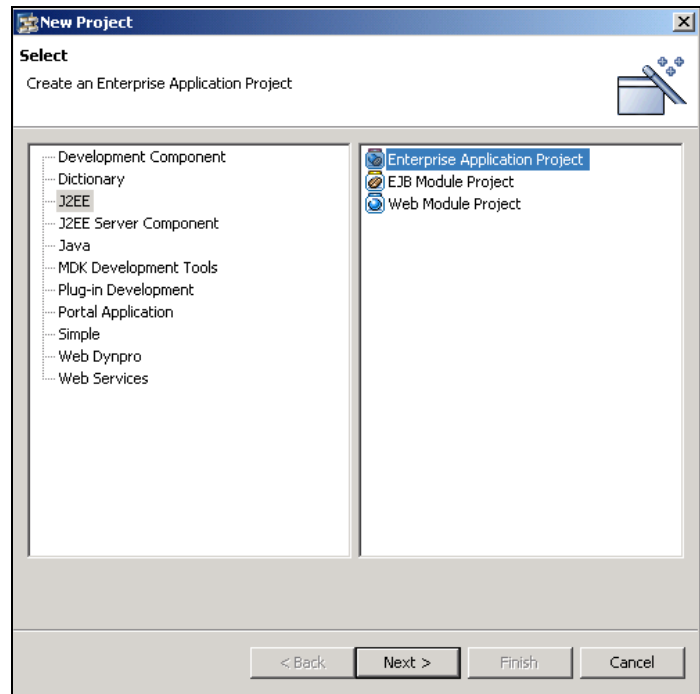
IBIOlap olap = ((IBIConnection) connection).getOlap();

List schemas = olap.getSchema();

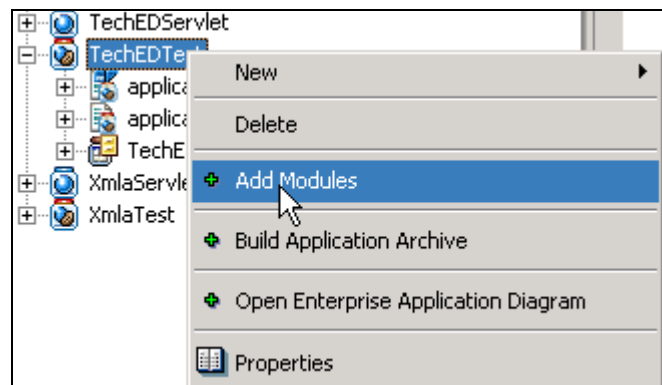
connection.close();

```

12. In the *New Project* wizard, create a new J2EE Enterprise Application Project.

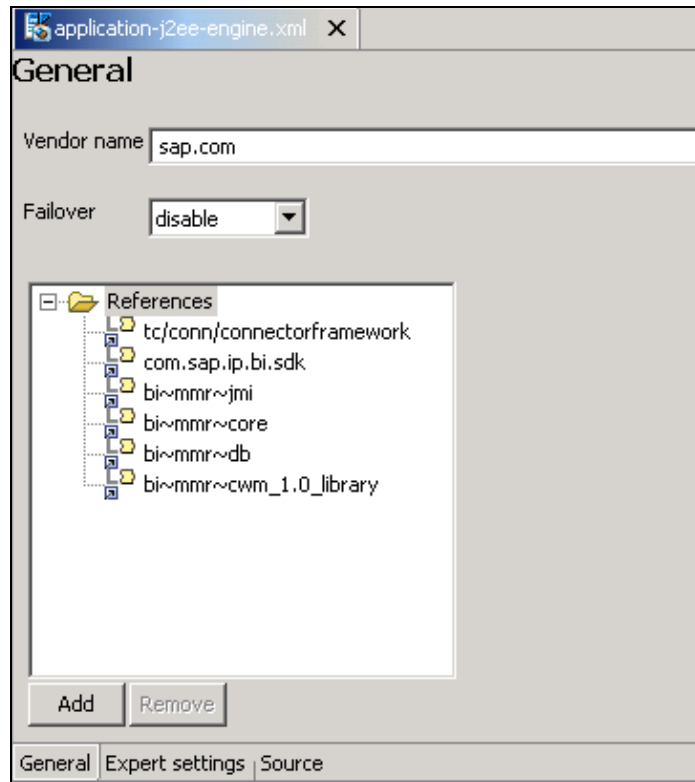


13. In the *J2EE Explorer*, right-click on the Enterprise Application Project, and select *Add Modules* to add your servlet to this Web application.



Configure the required library references for your Web application:

14. In the *J2EE Explorer*, double-click on the `applicaton-j2ee-engine.xml` file listed under your Web application.
15. On the *General* tab, add the library references as displayed to the right.



16. Deploy and test your servlet. When you run this servlet, you should retrieve a list of schemas in your system.

4 Appendix: Source Code

Below is source code for example servlet, web.xml, and application-j2ee-engine.xml files which demonstrate this scenario.

4.1 Exercise_4.java servlet

```
package teched.bi_sdk.exercises;

import java.io.IOException;
import java.io.PrintWriter;
import java.util.List;

import javax.naming.Context;
import javax.naming.InitialContext;
import javax.servlet.ServletException;
import javax.servlet.http.HttpServlet;
import javax.servlet.http.HttpServletRequest;
import javax.servlet.http.HttpServletResponse;

import org.omg.cwm.analysis.olap.Schema;

import com.sap.ip.bi.sdk.dac.connector.IBIConnection;
import com.sap.ip.bi.sdk.dac.connector.IBIOLap;
import com.sapportals.connector.connection.IConnectionFactory;
import com.sapportals.connector.connection.IConnectionSpec;

public class Exercise_4 extends HttpServlet {
    IConnectionFactory connectionFactory = null;
    IConnectionSpec connectionSpec = null;
    IBIConnection connection = null;

    public void init() throws ServletException {
    }

    public void service(
        HttpServletRequest request,
        HttpServletResponse response)
        throws ServletException, IOException {
        response.setContentType("text/html");
        PrintWriter out = response.getWriter();
        out.println("<HTML>");
        out.println("<HEAD><TITLE>Sample Servlet</TITLE></HEAD>");
        out.println("<BODY>");
        try {
            Context initctx = new InitialContext();
            // perform JNDI lookup to obtain connection factory
            connectionFactory =
                (IConnectionFactory) initctx.lookup(
                    "java:comp/env/" + "SDK_XMLA");

            // get connection using default connection properties
            connection =
                (IBIConnection) connectionFactory.getConnectionEx(null);
        }
    }
}
```

```

        IBIOlap olap = ((IBIConnection) connection).getOlap();

        List schemas = olap.getSchema();
        Schema schema = null;

        for (int i = 0; i < schemas.size(); i++) {
            schema = (Schema) schemas.get(i);
            out.println("schema: " + schema.getName() + "<br>");
        }
    } catch (Exception e) {
        e.printStackTrace(out);
    } finally {
        try {
            connection.close();
        } catch (Exception e) {
            e.printStackTrace(out);
        }
    }
    out.println("</BODY></HTML>");
    out.close();
}

public void destroy() {
}
}

```

4.2 web.xml file

```

<?xml version="1.0" encoding="UTF-8"?>
<!DOCTYPE web-app PUBLIC "-//Sun Microsystems, Inc.//DTD Web Application
2.3//EN" "http://java.sun.com/dtd/web-app_2_3.dtd">
<web-app>
    <display-name>WEB APP</display-name>
    <description>WEB APP description</description>
    <servlet>
        <servlet-name>Exercise_4</servlet-name>
        <servlet-class>teched.bi_sdk.exercises.Exercise_4</servlet-
class>
    </servlet>
    <resource-ref>
        <res-ref-name>SDK_XMLA</res-ref-name>
        <res-type>javax.resource.cci.ConnectionFactory</res-type>
        <res-auth>Container</res-auth>
    </resource-ref>
</web-app>

```

4.3 application-j2ee-engine.xml file

```

<?xml version="1.0" encoding="UTF-8"?>
<!DOCTYPE application-j2ee-engine SYSTEM "application-j2ee-engine.dtd">
<application-j2ee-engine>

```

```

<reference reference-type="weak">
  <reference-target provider-name="sap.com" target-type="library">
    tc/conn/connectorframework
  </reference-target>
</reference>
<reference reference-type="weak">
  <reference-target provider-name="sap.com" target-type="library">
    com.sap.ip.bi.sdk
  </reference-target>
</reference>
<reference reference-type="weak">
  <reference-target provider-name="sap.com" target-type="library">
    bi~mmr~jmi
  </reference-target>
</reference>
<reference reference-type="weak">
  <reference-target provider-name="sap.com" target-type="library">
    bi~mmr~core
  </reference-target>
</reference>
<reference reference-type="weak">
  <reference-target provider-name="sap.com" target-type="library">
    bi~mmr~db
  </reference-target>
</reference>
<reference reference-type="weak">
  <reference-target provider-name="sap.com" target-type="library">
    bi~mmr~cwm_1.0_library
  </reference-target>
</reference>
<provider-name>sap.com</provider-name>
<fail-over-enable mode="disable"/>
</application-j2ee-engine>

```

www.sap.com/netweaver