

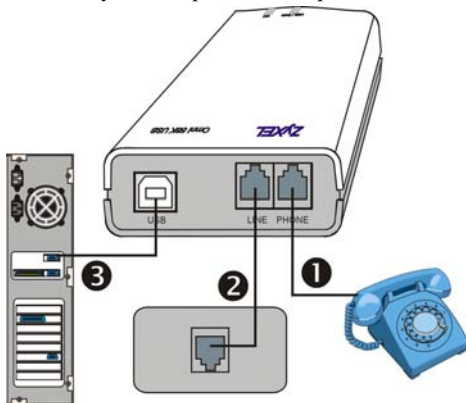
***Omni 56K USB Lite***  
***Quick Start Guide***

***ZyXEL***

TOTAL INTERNET ACCESS SOLUTION

# 1. Hardware Installation

- 1 Connect your modem to your analog phone or fax.
- 2 Use the phone cord included to connect to the phone jack on the wall.
- 3 Turn on your computer and insert the included CD. Plug one end of your USB cable to your modem and the other end to your computer's USB port.



# 2. Software Installation

Windows detects your modem and starts an installation wizard.

**NOTE:** If no installation wizard starts, unplug the USB cable and plug it in again. If this does not work, unplug the USB cable and restart your computer, then plug the USB cable back in.

## Windows 98 and 2000

Windows 98 screens are shown first, followed by the equivalent Windows 2000 screen.

**Step 1.** Click **Next** in the first screen.

**Step 2.** Click **Next** to accept the default selection.



**Step 3.** Click **Specify a location.**

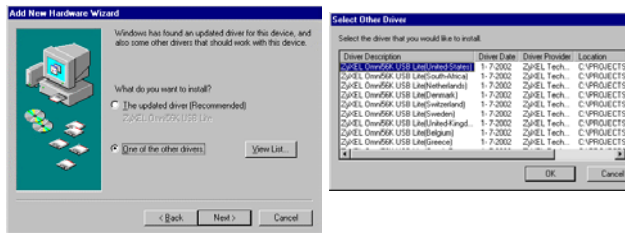
In Windows 98, click **Browse**, select **D:\Drivers\O56ULiteW98** and click **Next**.



In Windows 2000, click **Next**, browse for **D:\Drivers\O56ULiteW2K** and then click **OK**.



**Step 4.** In Windows 98, this screen is displayed. Click **One of the other drivers** and **View List**. Scroll down and select the driver for the country you are in and click **OK**.



Click **Next**. Windows copies the driver files into your system and builds the driver information database.

In Windows 2000, you go through the installation wizard more than once. The first time this screen is displayed, click **Next**. The second time, click **Install one of the other drivers** and then **Next**.



Scroll down and select the driver for the country you are in and click **Next**.



**Step 5.** After the ZyXEL USB modem has been installed, click **Finish** to complete the driver installation.



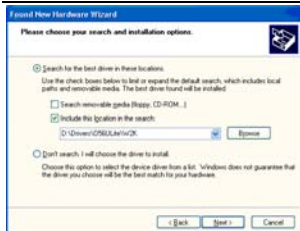
If this screen appears, click **Yes** to complete the installation.

## Windows XP

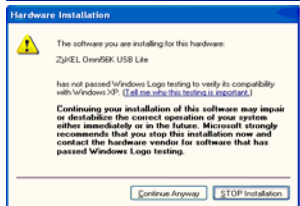
Follow these steps to install your USB driver.



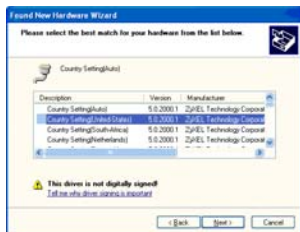
**Step 1.** Click **Install from a list or a specific location (Advanced)** and then **Next**.



**Step 2.** Click **Include this location in the search:** and then browse for **D:\Drivers\O56ULite\W2K**. Then click **Next**.



If this screen appears, click **Continue Anyway** to complete the installation.



**Step 3.** You go through the installation wizard more than once. On the second installation, scroll down and select the driver for the country you are in. Then click **Next**.

**Step 4.** After the ZyXEL USB modem has been installed, click **Finish** and follow the wizard to complete the driver installation.

## 3. TCP/IP Setup

### Windows 95/98/Me

#### Installing TCP/IP Components

1. Click **Start, Settings, Control Panel** and double-click the **Network** icon.
2. The **Network** window **Configuration** tab displays a list of installed components.

To install TCP/IP:

- a. In the **Network** window, click **Add**.
- b. Select **Protocol** and then click **Add**.
- c. Select **Microsoft** from the list of manufacturers.
- d. Select **TCP/IP** from the list of network protocols and then click **OK**.

#### Configuring TCP/IP

1. In the **Network** window **Configuration** tab, select your network adapter's **TCP/IP** entry and click **Properties**.
2. Click the **IP Address** tab. Click **Obtain an IP address automatically**.
3. Click the **DNS Configuration** tab. Select **Disable DNS**.
4. Click the **Gateway** tab. Highlight any installed gateways and click **Remove** until there are none listed.
5. Click **OK** to save and close the **TCP/IP Properties** window.
6. Click **OK** to close the **Network** window.
7. Turn on your Prestige and restart your computer when prompted. Insert the Windows CD if prompted.

## Verifying TCP/IP Properties

1. Click **Start** and then **Run**. In the **Run** window, type "winipcfg" and then click **OK** to open the **IP Configuration** window.
2. Select your network adapter. You should see your computer's IP address, subnet mask and default gateway.

### **Windows NT/2000/XP**

## Configuring TCP/IP

1. Click **Start, Settings, Network and Dial-up Connections** and right-click **Local Area Connection** or the connection you want to configure and click **Properties**. For Windows XP, click **start, Control Panel, Network and Internet Connections** and then **Network Connections**. Right-click the network connection you want to configure and then click **Properties**.
2. Select **Internet Protocol (TCP/IP)** (under the **General** tab in Win XP) and click **Properties**.
3. The **Internet Protocol TCP/IP Properties** window opens. Click **Obtain an IP address automatically** and **Obtain DNS server automatically**.
4. Click **Advanced** and remove any installed gateways in the **IP Settings** tab, then click **OK**.
5. Click **OK** to save and close the **Internet Protocol (TCP/IP) Properties** window.
6. Click **OK** to close the **Local Area Connection Properties** window.
7. Turn on your Prestige and restart your computer (if prompted).

## Verifying TCP/IP Properties

---



1. Click **Start, Programs, Accessories** and then **Command Prompt**.
2. In the **Command Prompt** window, type "ipconfig" and then press **ENTER**. The window displays information about your IP address, subnet mask and default gateway.

## **4. Dial-Up Networking**

Do the following to get to the connection wizard. Fill in the wizard screens with information from your ISP.

### **In Windows 98**

Click **Start ▶ Programs ▶ Accessories ▶ Communications ▶ Dial-Up Networking**.

Double-click the **Make New Connection** icon.

### **In Windows 2000**

Click **Start ▶ Settings ▶ Network and Dial-Up Connections ▶ Make New Connection**.

### **In Windows XP**

Click **start ▶ All Programs ▶ Accessories ▶ Communications ▶ New Connection Wizard**.

## **5. Bitware Installation**

The Bitware application is contained in the CD-ROM disc that came with your modem package. To install Bitware, insert the CD-ROM disc into your CD-ROM drive. Then, proceed with the following steps.

## Installing Bitware

- Step 1.** Use **windows®** to select your CD-ROM drive, then double-click on the **Msetup.exe**



Msetup.exe

icon/filename as shown.

- Step 2.** The following screen appears:



- Step 3.** Choose the Bitware program from the **Product** list-box, and select your Windows system and language on the right side, then click **Install**. Follow the wizard to complete the installation process.