

# **P-630-S Series**

ADSL USB Modem

## **Quick Start Guide**

Version 1.0  
7/2005

The logo for ZyXEL, featuring the word "ZyXEL" in a bold, blue, sans-serif font. The "y" is lowercase and has a distinctive shape, while the "X" is uppercase and has a unique design. The "EL" are also uppercase.

## Overview

The Prestige 630-S (P-630-S) allows you to have high-speed ADSL Internet access from a computer via a USB connection.

See the User's Guide for more information on all features.

## 1 Installing the USB Driver

System Requirements:

- Windows 98 SE (Second Edition), Windows Me (Millennium Edition), Windows 2000 or Windows XP
- or
- Macintosh operating system versions 9.1 or later
- An available USB port

### 1.1 Windows

Screen shots for Windows XP are shown in the following procedure.

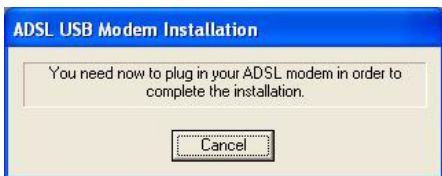
**Note:** You must start the driver setup wizard before connecting the Prestige to your computer.

1 Close all Windows programs and applications.

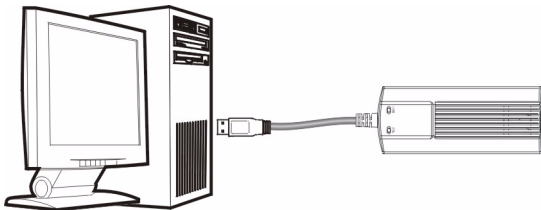
2 Insert the CD that came with your Prestige into the CD-ROM of your computer. The main screen displays as shown. Click **Setup**. If the setup does not run automatically, double-click **Setup.exe** from the CD.



- 3 Wait until you are prompted to connect your Prestige's USB cable to the computer.



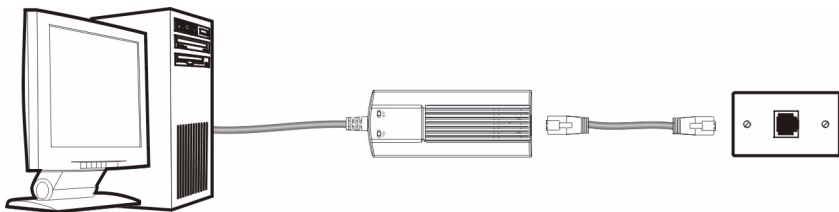
Connect the USB cable to a USB port on your computer.



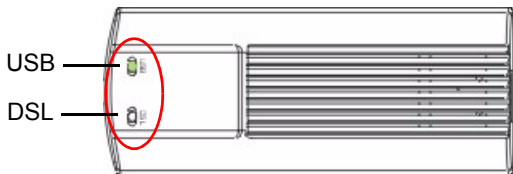
- 4 When the installation is completed, you will see this window. Click **OK** to close the wizard.



- 5 Connect the Prestige's DSL port to a telephone jack using the included telephone wire.



The **USB** LED turns on when you have a successful USB connection. The **DSL** LED blinks during DSL line initialization and turns steady green when the Prestige has a DSL connection.



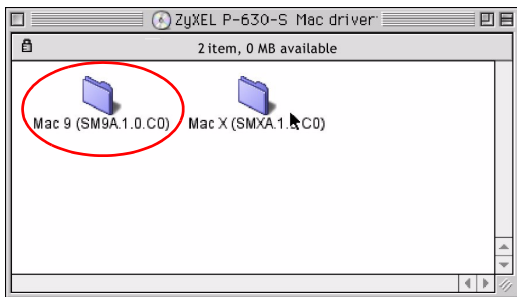
## 1.2 Mac

The following two sections describe how to install your and modem for both Mac OS 9 and X.

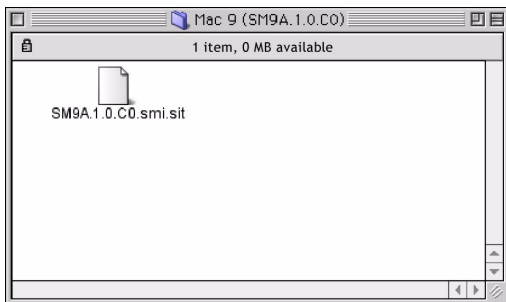
### Mac OS 9

Screens for Mac OS 9.2 are shown in this section.

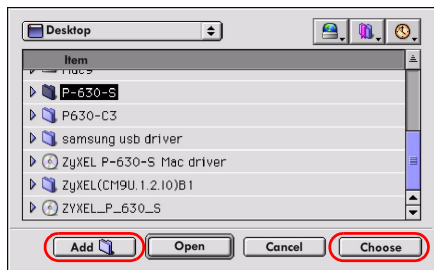
- 1 Close all programs and applications.
- 2 Insert the included CD into the CD-ROM drive. An icon for the CD appears. Double-click the CD's icon.
- 3 Double-click the Mac 9 driver folder.



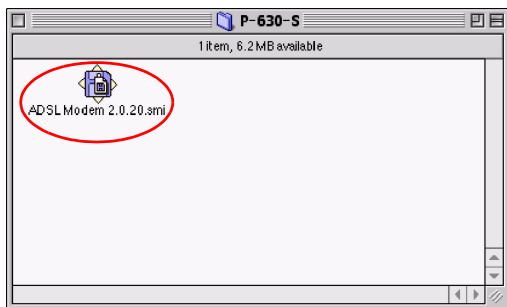
- 4 Double-click **SM9A.1.0.C0.smi.sit**.



- 5 Select a folder or click **Add** to create a new folder to where you want to extract this .sit file and click **Choose**.



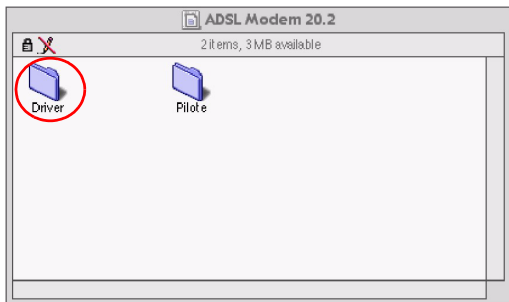
- 6 The file **ADSLModem 2.0.20.smi** will be created in the folder you selected. Double-click **ADSLModem 2.0.20.smi**.



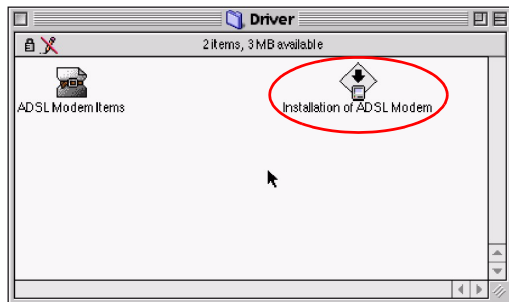
- 7 The **ADSLModem 20.2** icon will display on the desktop. Double-click **ADSLModem 20.2**.



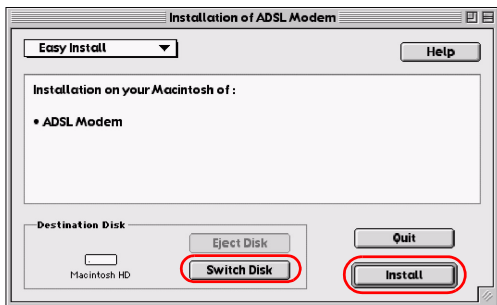
8 Double-click **Driver**.



9 Double-click **Installation of ADSL Modem** to install the driver.



10 Click **Switch Disk** to select a destination (this must be on an actual physical hard drive on the Macintosh, not a virtual drive) and click **Install**.



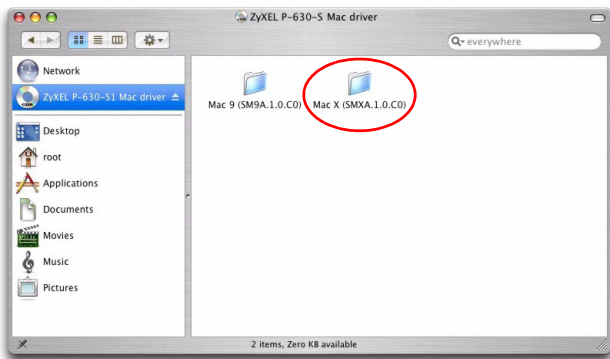
- 11 Click **Restart** to reboot your computer and complete the driver installation.



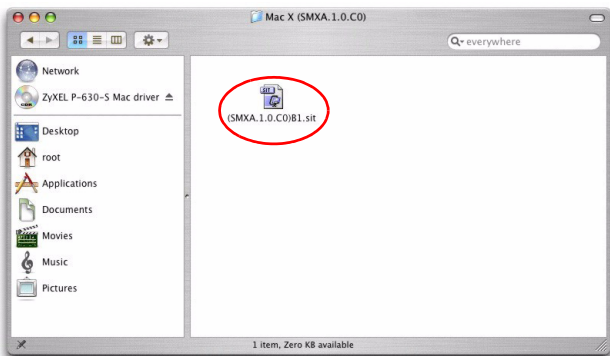
## Mac OS X

Screens for Mac OS 10.3 are shown in this section.

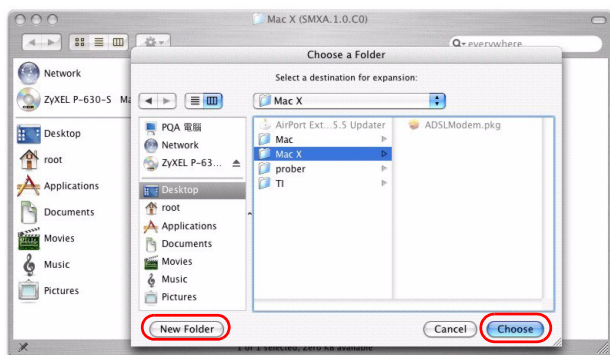
- 1 Close all programs and applications.
- 2 Insert the included CD into the CD-ROM drive. An icon for the CD appears. Double-click the CD's icon.
- 3 Double-click the Mac X driver folder.



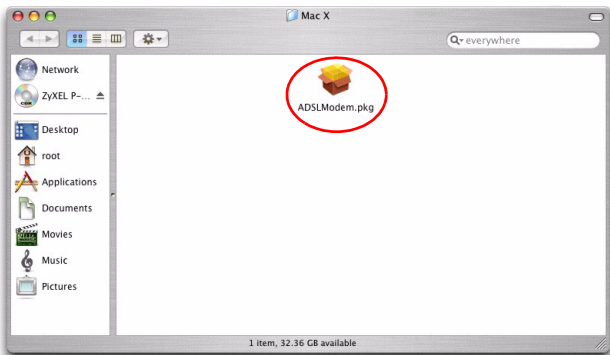
- 4 Double-click  
(SMXA.1.0.CO)B  
1.sit.



- 5 Select a folder  
or click **New  
Folder** to create  
a new folder to  
where you want  
to extract this  
.sit file and click  
**Choose**.



- 6 The file  
**ADSLModem.pk  
g** will be created  
in the folder you  
selected.  
Double-click  
**ADSLModem.pk  
g** to install the  
driver.

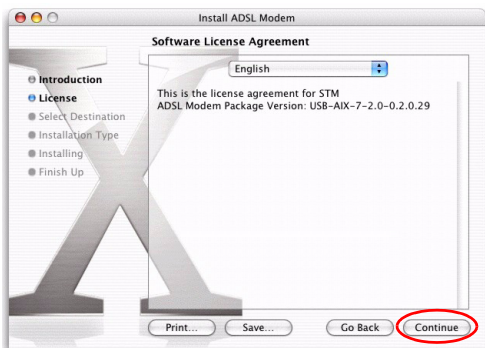




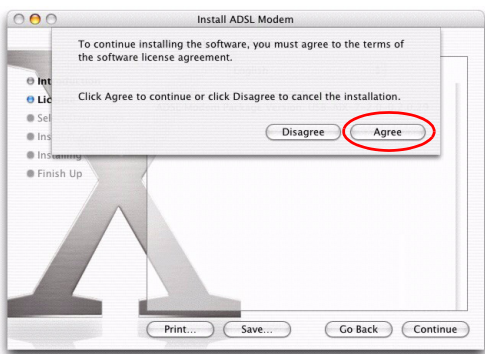
7 A welcome screen appears. Click **Continue**.



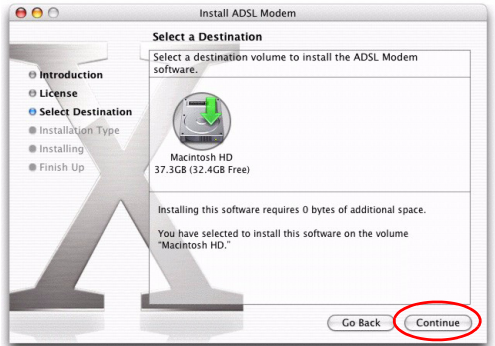
8 Click **Continue**.



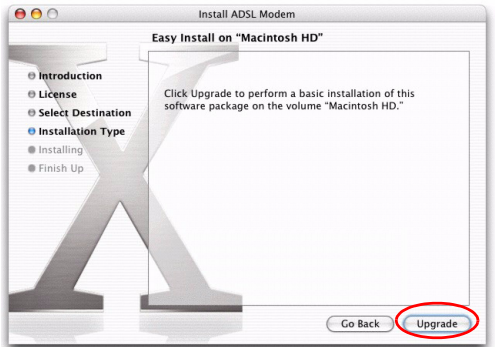
9 A screen displays asking you to agree to the agreement. Click **Agree**.



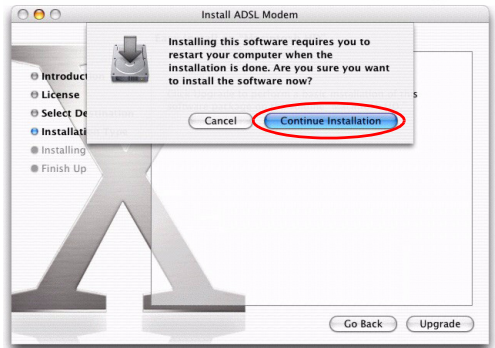
10 You will then see the **Select a Destination** screen, select a destination (this must be on an actual physical hard drive on the Macintosh, not a virtual drive) and click **Continue**.



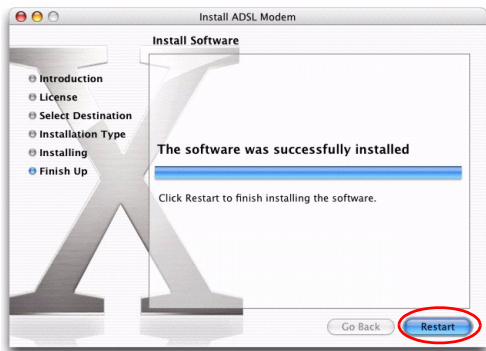
11 Click **Upgrade**.



12 You then see a screen telling you that you must restart the computer after the installation completes. Click **Continue Installation**. The driver will automatically install.



**13** Click **Restart** to reboot your computer and complete the driver installation.



## 2 Accessing the Internet

You will need your Internet access information such as user name and password if given by your ISP.

ISP INFORMATION	CONNECTION METHOD YOU ARE USING	ACTION
None	Bridge encapsulation with a dynamic IP address	Open your browser and surf the web.
A user name and password	PPPoA or PPPoE encapsulation	Go to <a href="#">Section 2.1 on page 11</a> .
An IP address only	Bridge encapsulation with a static IP address	Go to <a href="#">Section 2.2 on page 17</a> .

**Note:** The VPI and VCI are 8 and 35 by default; if your ISP gave you a different VPI and VCI, see the User's Guide.

### 2.1 PPPoA or PPPoE Dial-up Connection

If you are using PPPoE or PPPoA encapsulation, you must dial up your Internet connection like a traditional modem.

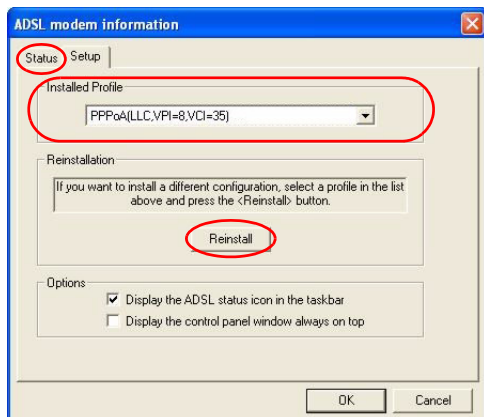
**Note:** If your ISP gave you an IP address, see also [Section 2.2 on page 17](#) on how to configure a static IP address on your computer.

## 2.1.1 Windows

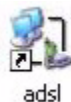
1 After you install the driver and the Prestige, the ADSL status icon will appear in the system tray.



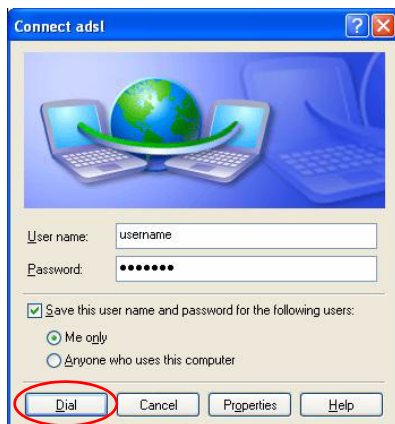
2 Double-click the icon to display the configuration wizard and select the **Setup** tab. Select a PPPoE or PPPoA profile and click **Reinstall**.



3 The dial-up icon appears on your desktop.



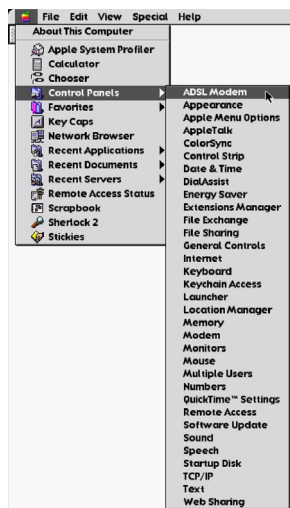
4 Double-click the icon to configure your user name and password for Internet access. Enter the user name and password that your ISP gave you and click **Dial**.



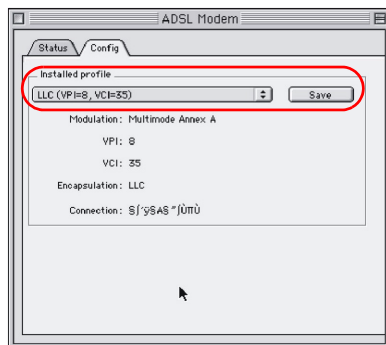
## 2.1.2 Mac

### Mac OS 9

- 1 Click the Apple icon, **Control Panels** and **ADSL Modem** to start the configuration wizard.



- 2 Click the **Config** tab, select a profile and click **Save**.

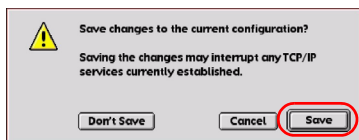
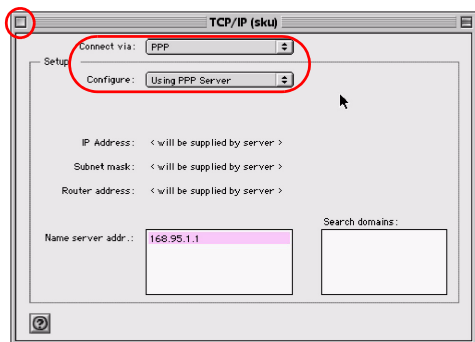


- 3 Click the Apple icon, **Control Panels** and **TCP/IP**.

- 4 In the **TCP/IP** screen, select **PPP** in the **Connect via** field.

Select **Using PPP Server** in the **Configure** field or select **Manually** and enter the IP address given by your ISP.

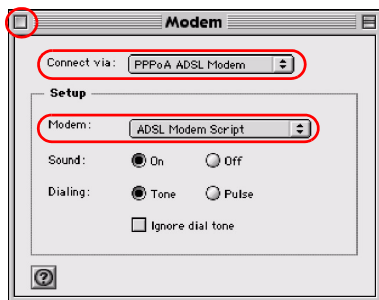
Click the close button at the top left corner and click **Save**.



- 5 Click the Apple icon, **Control Panels** and **Modem**.

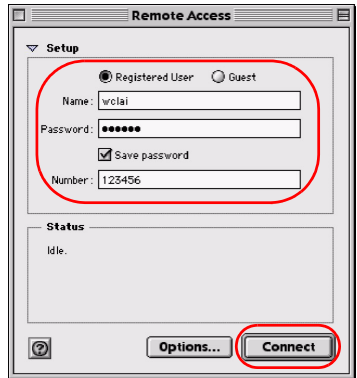
- 6 Select **PPPoA ADSL modem** or **PPPoE ADSL modem** in the **Connect via** field and **ADSL Modem Script** in the **Modem** field.

Click the close button at the top left corner and click **Save**.



- 7 Click the Apple icon, **Control Panels** and **Remote Access**.

- 8 Select **Registered User**, enter the user name and password that your ISP gave you, enter any number in the **Number** field and click **Connect**.

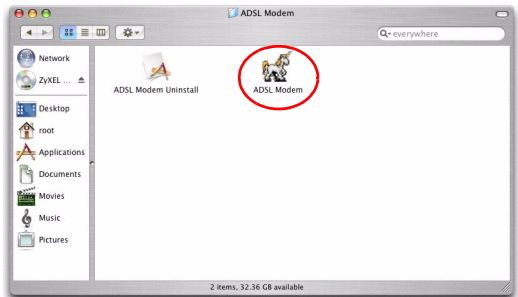


## Mac OS X

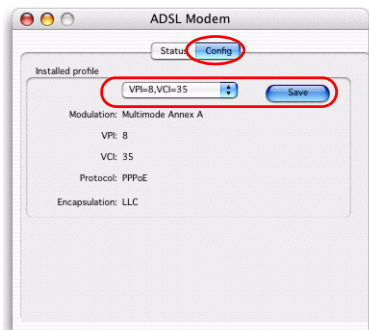
- 1 Click **Finder**, **Applications** and **ADSL Modem**.



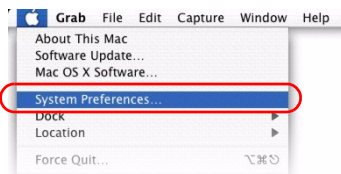
- 2 Double-click **ADSL Modem** to start the configuration wizard.



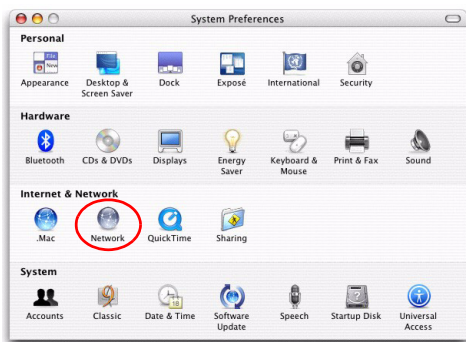
- 3 Click the **Config** tab, select a PPPoE or PPPoA profile and click **Save**.



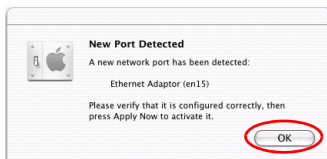
- 4 Click the Apple icon and **System Preferences**.



- 5 Double-click **Network**.

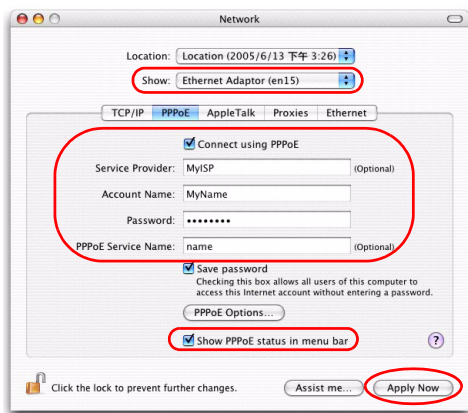


- 6 A **New Port Detected** screen opens when the computer detects that the ADSL link is up. Click **OK**.





- 7 In the **Network** screen, select **Ethernet Adaptor (en x)** in the **Show** field. Click the **PPPoE** tab and select the **Connect using PPPoE** check box. Type the information from your ISP in the **Service Provider, Account Name, Password and PPPoE Service Name** fields. Select the **Show PPPoE status in menu bar** check box. Click **Apply Now**.



- 8 Click the PPPoE status menu bar icon at the right corner and select **Connect**.



## 2.2 Setting up Your Computer's IP Address

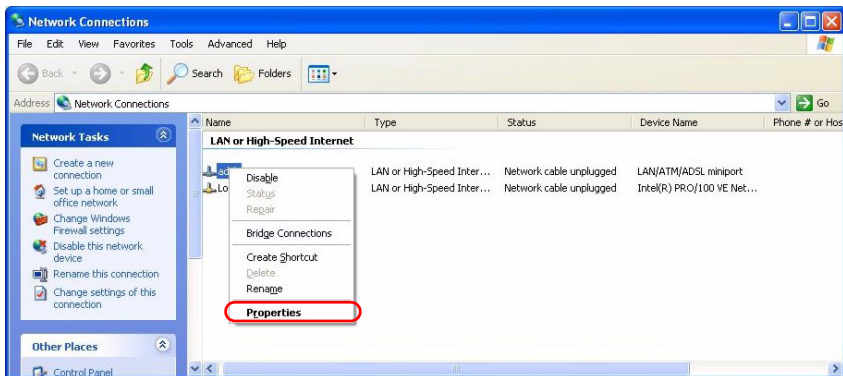
**Note:** This section shows you how to configure an IP address on your computer. You only need to do this if you were given an IP address by your ISP.

### 2.2.1 Windows

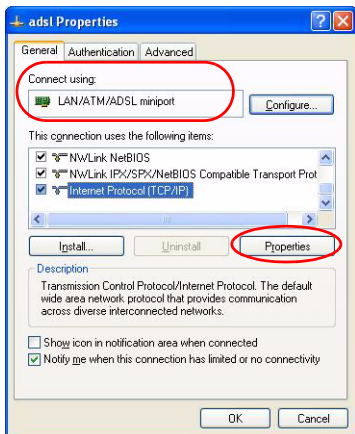
Screens for Windows XP are shown in this guide unless otherwise specified. Steps and screen shots may vary depending on the version of Windows.

- 1 Click **Start, Control Panel** and **Network Connections**.

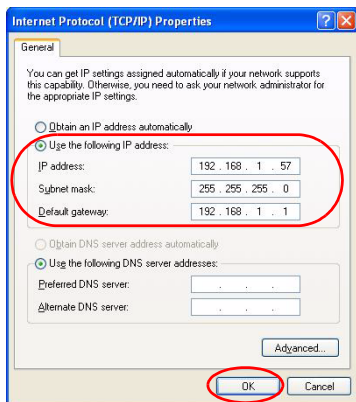
- 2 Right-click on the icon that corresponds to your new USB connection (not the one that corresponds to your network card) and select **Properties**.



- 3 In the **Properties** screen, make sure the **Connect using** field displays "LAN/ATM/ADSL miniport". Select **Internet Protocol (TCP/IP)** and click **Properties**.



- 4 Click **Use the following IP Address** and fill in the **IP address**, **Subnet mask** and **Default gateway** (given by your ISP) fields. Click **OK**.

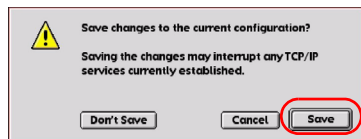
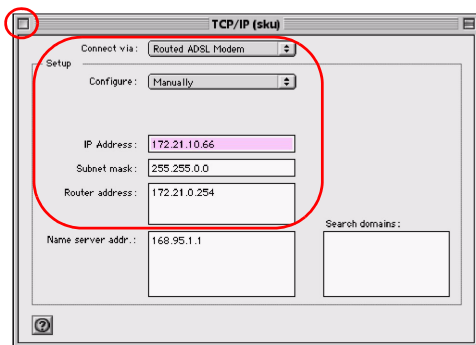


## 2.2.2 Mac

### Mac OS 9

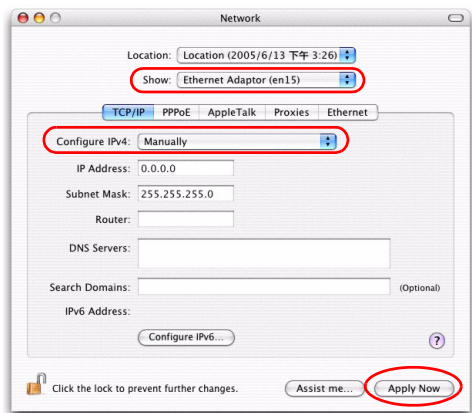
- 1 Click the Apple icon, **Control Panels** and **TCP/IP**.
- 2 In the **TCP/IP** screen, select **PPP, Routed ADSL Modem** or **Bridged ADSL Modem** in the **Connect via** field and **Manually** in the **Configure** field. Fill in the **IP address**, **Subnet mask** and **Router address** (given by your ISP) fields.

Click the close button at the top left corner and click **Save**.



**Mac OS X**

- 1 Click the Apple icon, **System Preferences** and **Network** to open the **Network** screen.
- 2 Select **Ethernet Adaptor (en x)** that corresponds to your new USB connection in the **Show** field. Click the **TCP/IP** tab and select **Manually** in the **Configure IPv4** drop-down list box. Fill in the **IP address**, **Subnet mask** and **Router** (given by your ISP) fields. Click **Apply Now**.

**3 Troubleshooting**

PROBLEM	CORRECTIVE ACTION
None of the LEDs turn on.	<p>Make sure your computer is turned on.</p> <p>Check the USB cable connections between the Prestige and your computer.</p> <p>Check the USB cable (see if the USB cable works with a different USB device).</p> <p>Carefully follow the instructions to uninstall and reinstall the driver. See your User's Guide on how to uninstall the driver.</p> <p>If the error persists, you may have a hardware problem. In this case, you should contact your local vendor.</p>

PROBLEM	CORRECTIVE ACTION
Cannot access the Internet.	<p>Verify the Internet connection settings.</p> <p>Make sure you entered the correct user name and password if you are using PPPoE or PPPoA.</p> <p>Make sure the <b>DSL</b> port is properly connected to the phone jack with a telephone wire.</p> <p>Check the telephone wire (use it to plug the phone directly into the wall jack for a dial tone or try using a different one).</p> <p>Carefully follow the instructions to uninstall and reinstall the driver. See your User's Guide on how to uninstall the driver.</p> <p>Restart your computer.</p>
Windows does not auto-detect the USB connection to the modem.	<p>Make sure the Prestige is turned on and connected to the USB port on the computer.</p> <p>Perform a hardware scan by clicking <b>Start, Settings, Control Panel</b> and double-clicking <b>Add/Remove Hardware</b>. (Steps may vary depending on the version of Windows).</p> <p>Follow the on-screen instructions to search for the Prestige and install the driver.</p> <p>Check for possible hardware conflicts. In Windows, click <b>Start, Settings, Control Panel, System, Hardware</b> and then click <b>Device Manager</b>. Verify the status of the Prestige under <b>Network Adapters</b>. (Steps may vary depending on the version of Windows).</p> <p>Connect the Prestige to another computer. If the error persists, you may have a hardware problem. In this case, you should contact your local vendor.</p>

## Viewing Your Product's Certifications

- 1 Go to [www.zyxel.com](http://www.zyxel.com).
- 2 Select your product from the drop-down list box on the ZyXEL home page to go to that product's page.
- 3 Select the certification you wish to view from this page.