

WPA 1000

IP AV

Support Notes

Version
Mar. 2007

Overview

In a presentation using a projector, the position of the presenter's computer has to be within the reach of the VGA cable, which may sometimes cause troubles. In particular, when people in a meeting have to project more than one computer screen and switch among them very often, it is inconvenient and may delay the progress of the meeting.

Zexel's *WPA-1000* provides total freedom for presenters during meetings and lectures. The VGA cable will no longer be a constraint and switching among screens can be as easy as a simple click!

WPA-1000 is an 802.11g compliant Wireless Projector Adaptor that can connect computers (notebooks or desktops with 802.11g support) to the projectors, LCD display or plasma screen wirelessly. It connects to the projector with a standard 15-pin VGA connector. The resolution can be as high as 1024 x 768 pixels and 24-bit color. It supports industry standard 64/128 WEP.

The easy-to-use client application included in *WPA-1000* allows users to install by accessing the admin web page of *WPA-1000* and clicking the installation link. The installation takes place only once and next time when the installed computer enters the meeting room and associate with the *WPA-1000*, it is automatically ready to run. Besides, it provides a control panel that allows users to start/stop projection by a simple click and it is done within seconds.

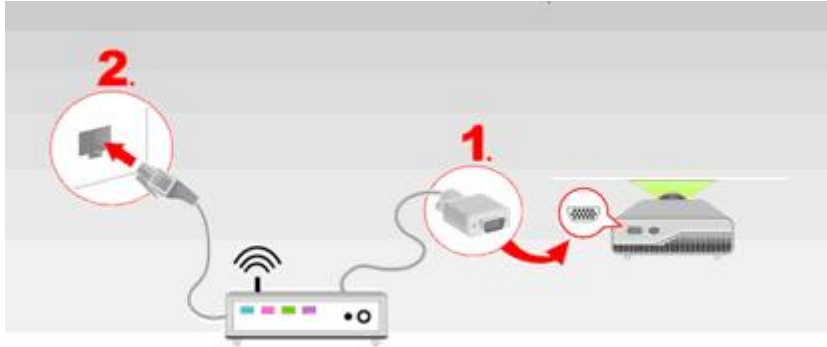
This following scenario will show you how to switch different presenters when using WPA-1000 during the meeting. Presenter1 will be the first person who connects to the WPA-1000 with wireless connection and he also is the administrator of the WPA-1000, who is able to control WPA-1000 via web browser. The Presenter2 will be the second person to connect to WPA-1000. In this scenario, you also can learn how to be an administrator of WPA-1000 in order to assign the presenter to carry out screen projecting via WPA-1000.

Scenario:

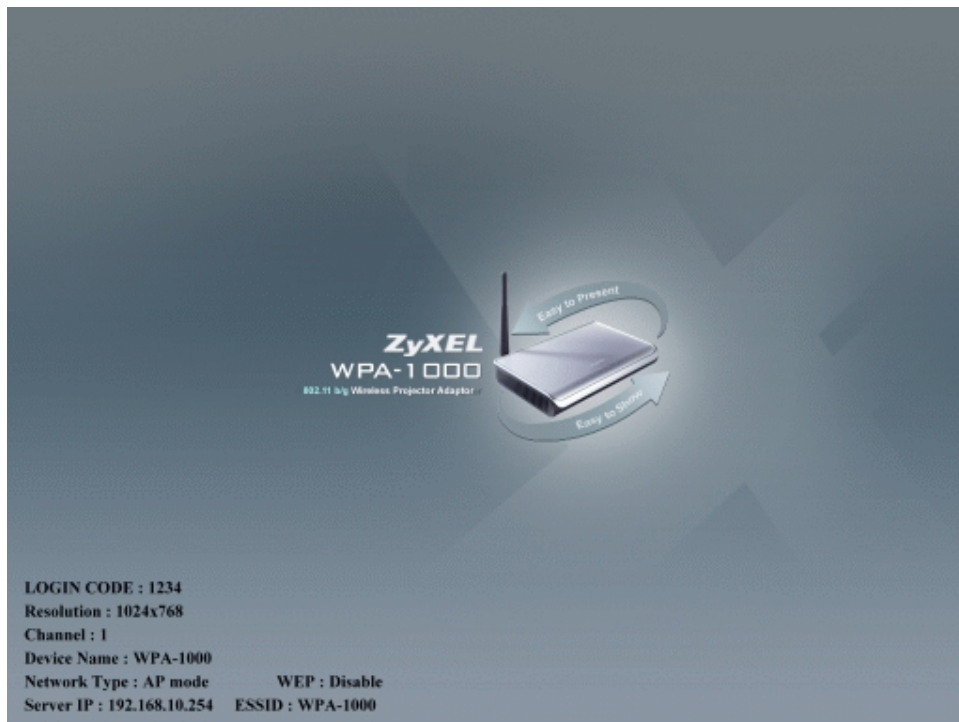
- Set up WPA-1000
- How Presenter1 connects his computer to WPA-1000
- Starting projecting on Presenter1.
- Starting projecting on Presenter2.
- To manage the WPA-1000 as Administrator.

Set up WPA-1000

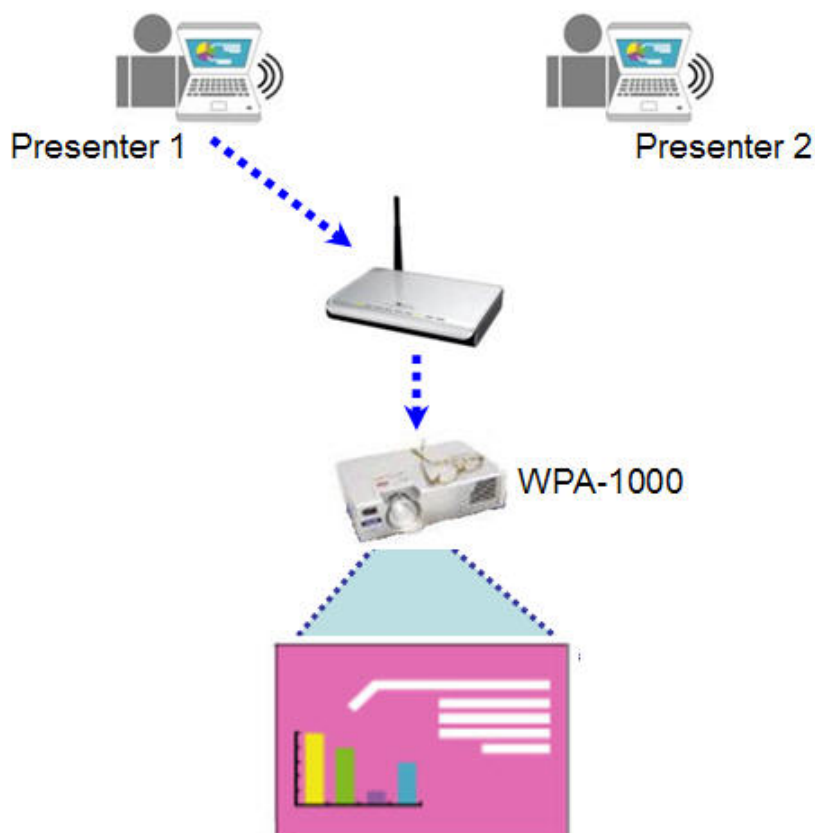
1. Connect projector to WPA-1000's VGA plug via VGA cable (included in package).
2. Connect power adaptor and press power button on WPA-1000.



3. Once you see the page below, WPA-1000 is ready to do screen projecting.



How Presenter1 connects his computer to WPA-1000



There are two ways to connect to WPA-1000 from your computer.

- **Via Wireless Connection:**

1. Enable the wireless scan.
2. The default ESSID for WPA-1000 is “WPA-1000”.
3. Choose “WPA-1000” to connect.

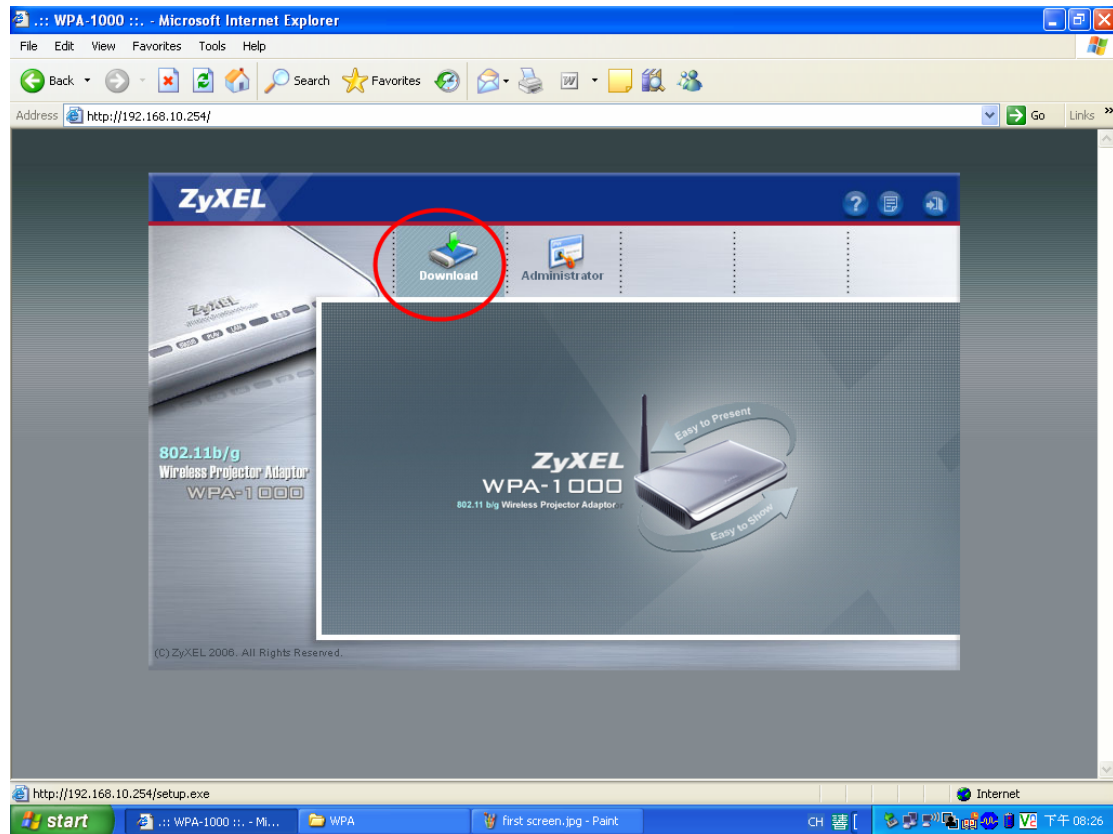
- **Via Wired Connection:**

1. Connect crossover cable to WPA-1000's Ethernet port from the computer's Ethernet port.
2. When the LAN LED is on, WPA-1000 connects to the computer successfully.

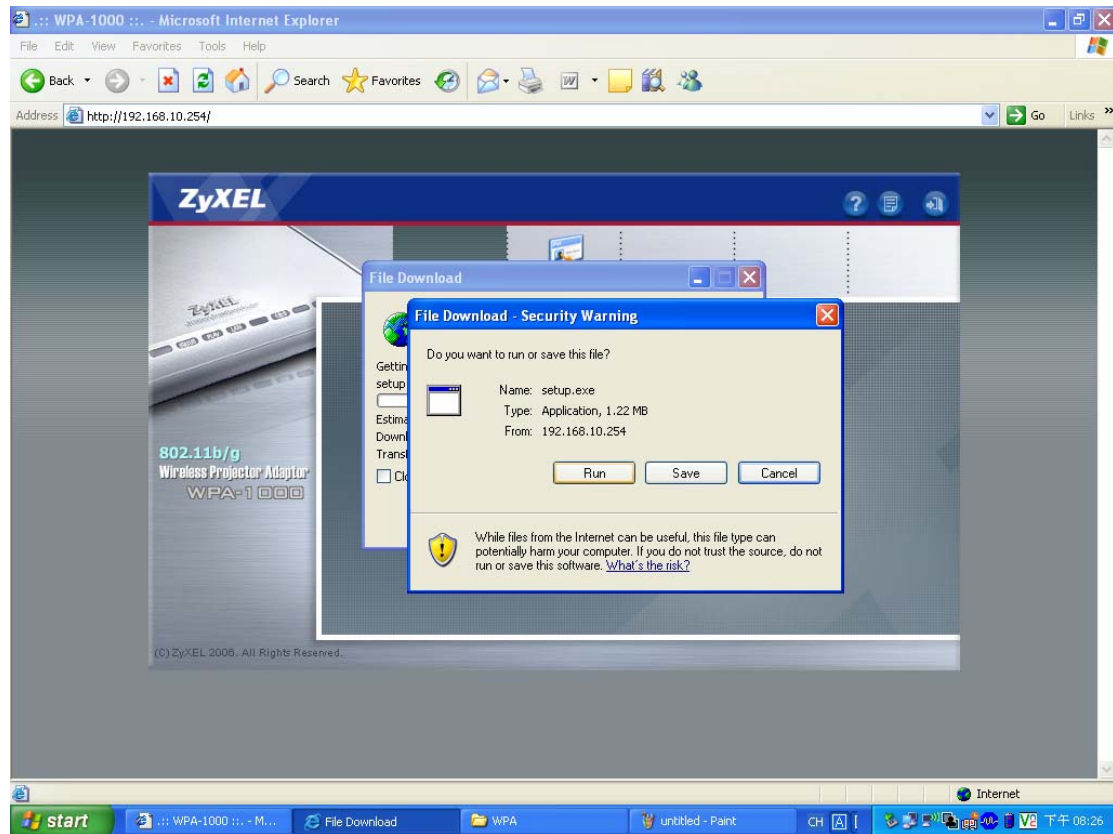
Install Projecting Utility:

For the first time user, please follow instructions below to install projecting utility first.

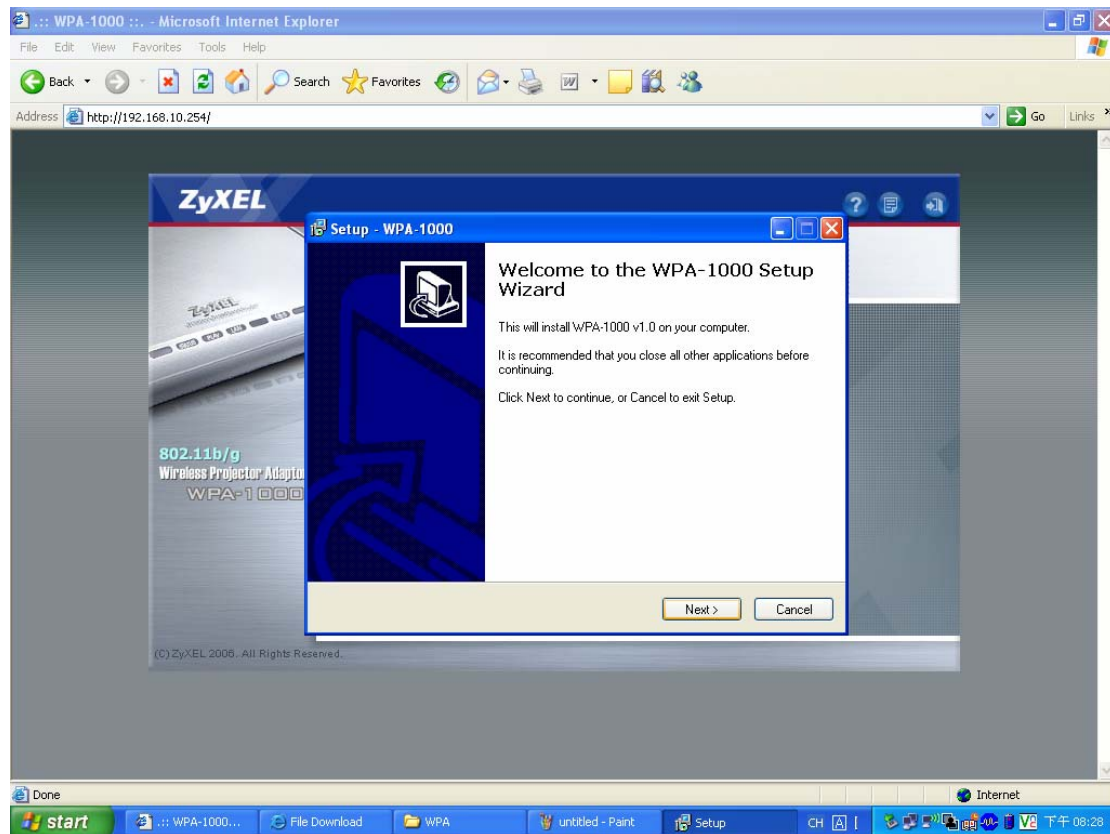
1. Start IE browser application.
2. Input the default IP address (192.168.10.254) or the Server IP in web address to see the main web page below.



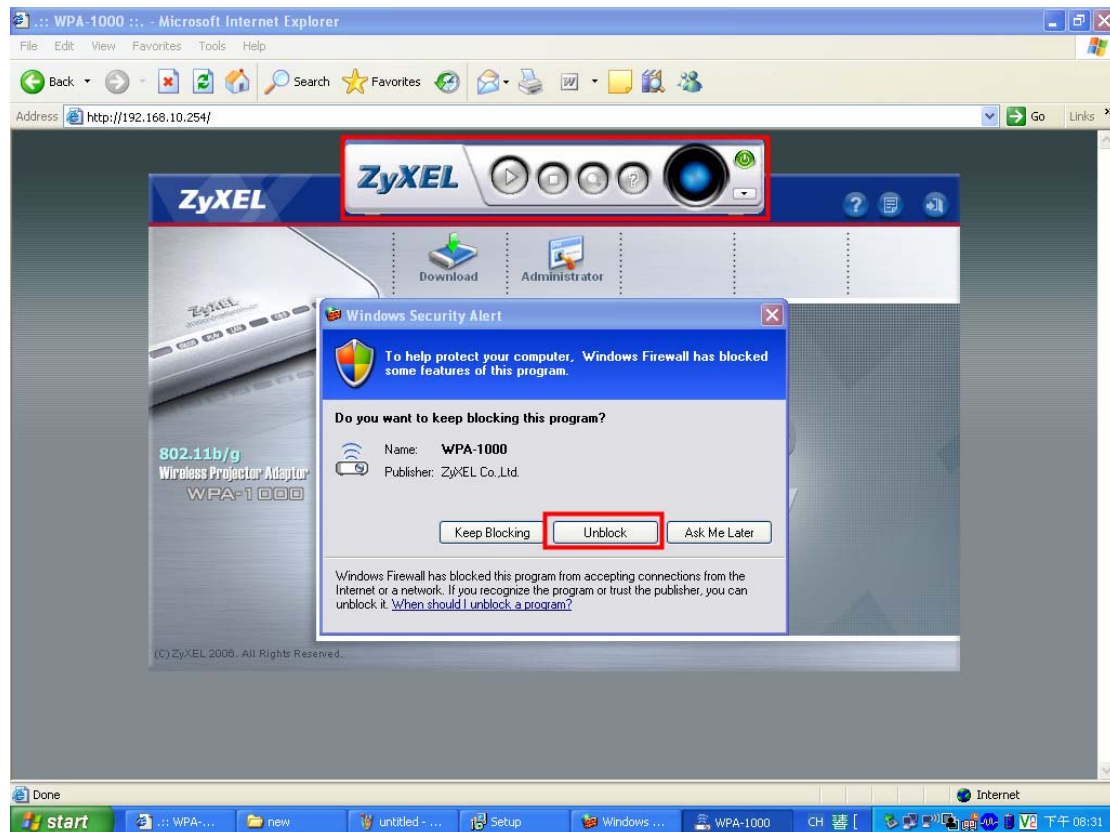
3. Press “Download” button to store the utility file, setup.exe.



4. Execute the setup.exe.



<Note> If you are using Microsoft Windows XP service packet 2, you will also see the pop up screen as shown below. Please click “Unblock” to proceed with the program execution.

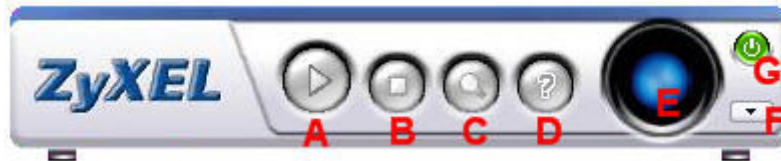


5. After installation, a shortcut (WPA-1000) will be placed on your desktop.



6. Reboot your computer.

After successful installation and reboot of your computer, please double click the WPA-1000 short cut on desktop and a control panel will pop up.



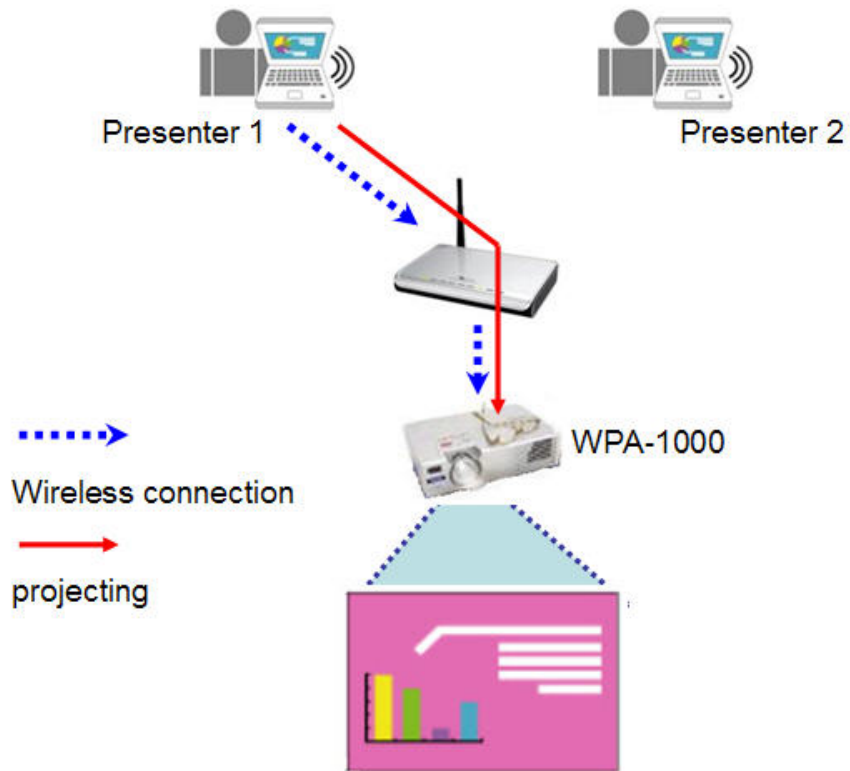
7. Functionality Description for Each Button:

- A: Press to start the project.
- B: Stop current screen projecting.
- C: Search available projector, usually it is the projector that connects to WPA-1000.
- D: Open HELP file.
- E: Refresh current projection screen.
- F: Minimize this utility.

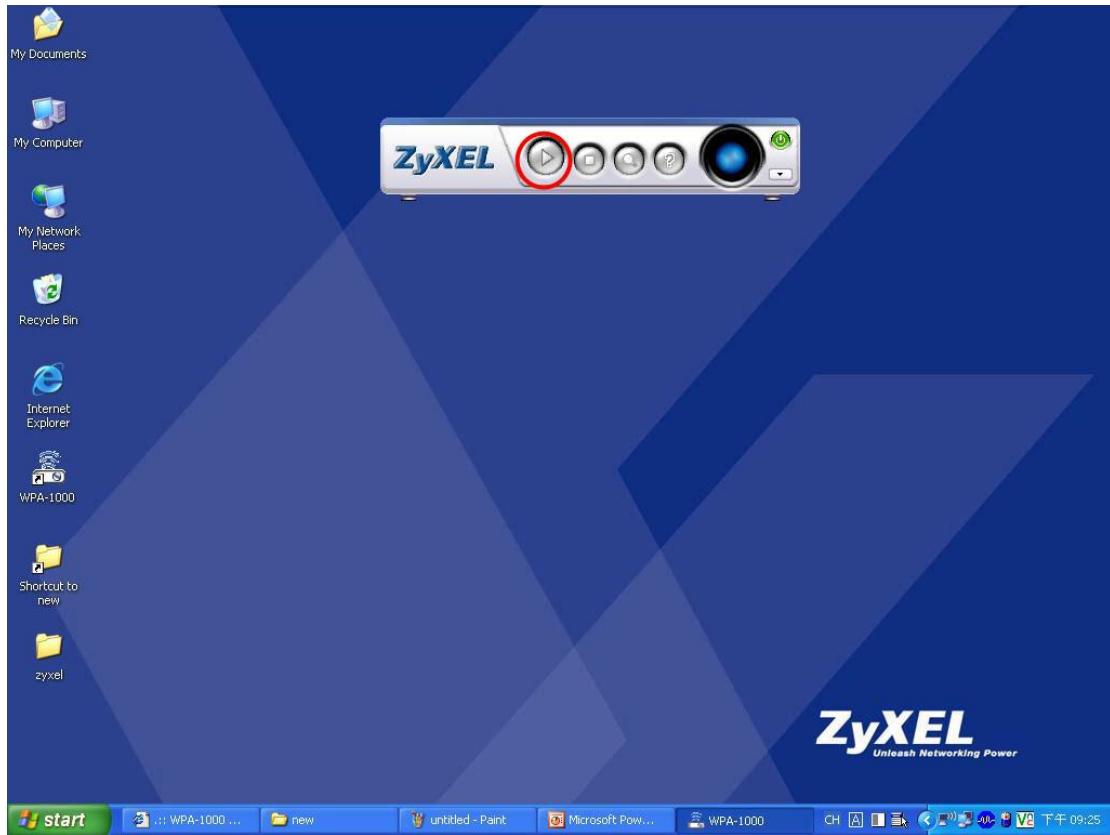


- G: Close and exit this utility.

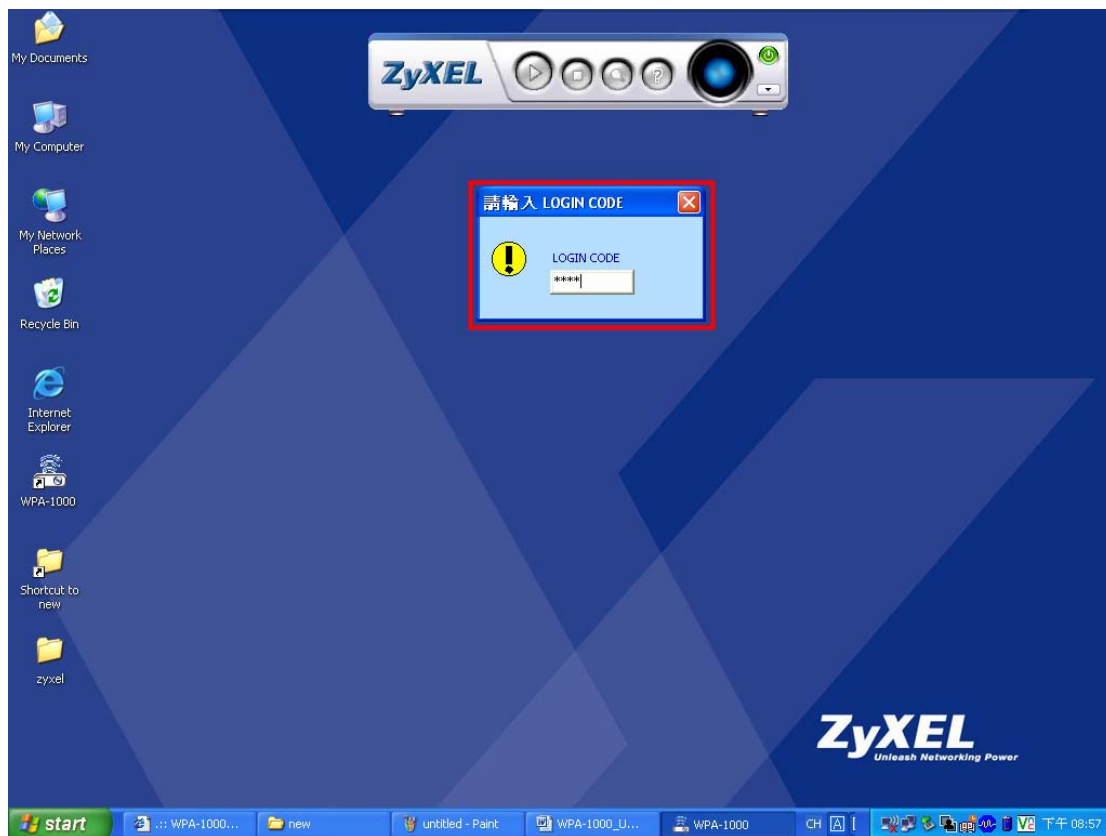
Starting projecting on Presenter1



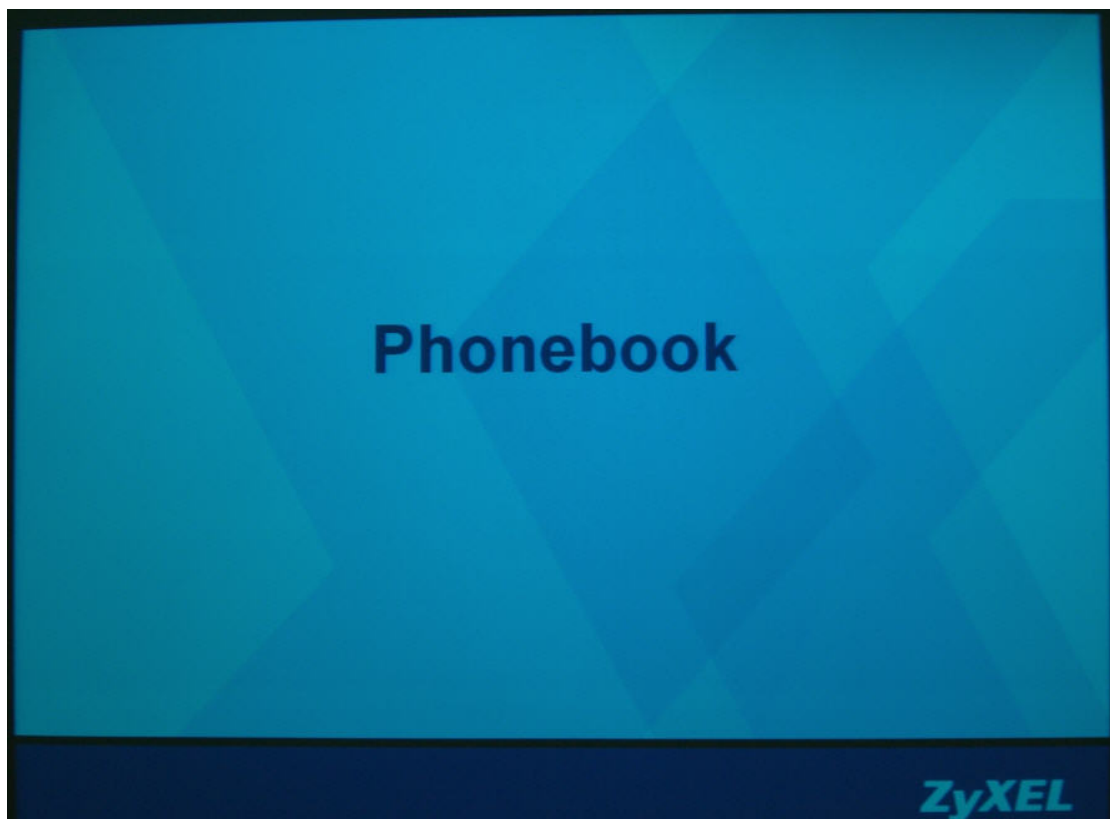
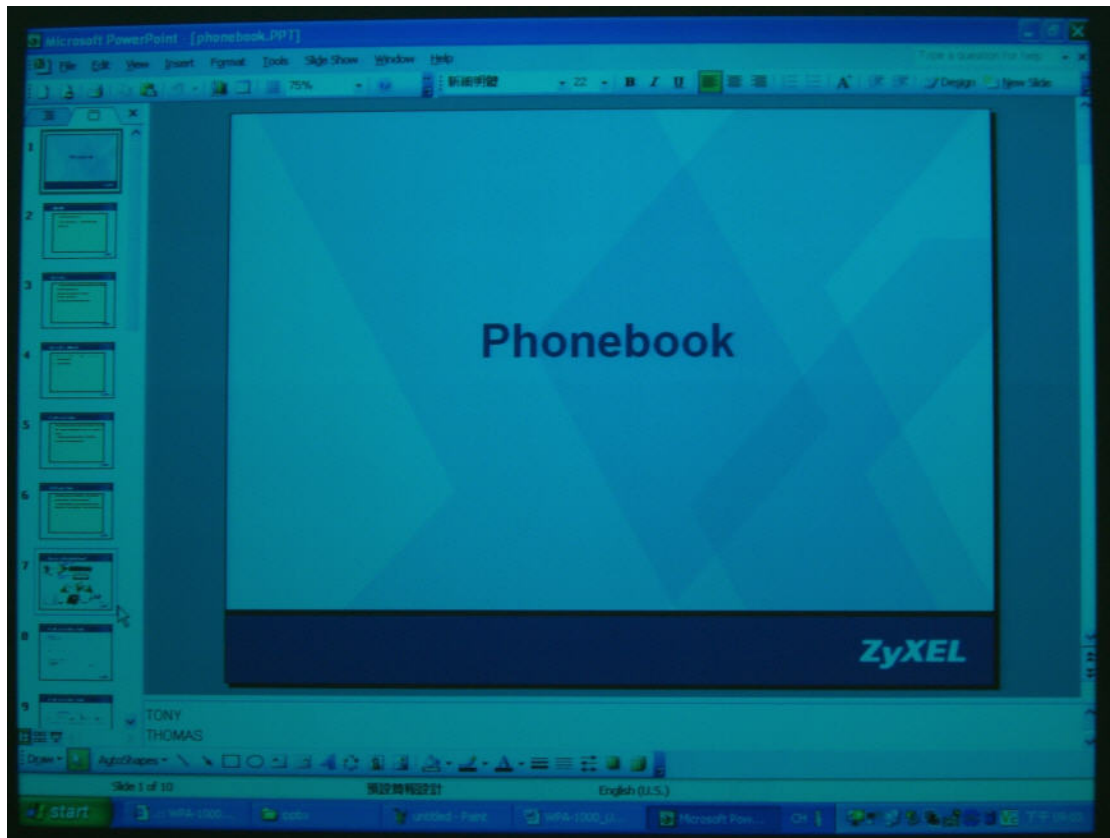
1. Click the start button on the control panel as shown below to start the screen projecting for the desktop of the Presenter1's computer.



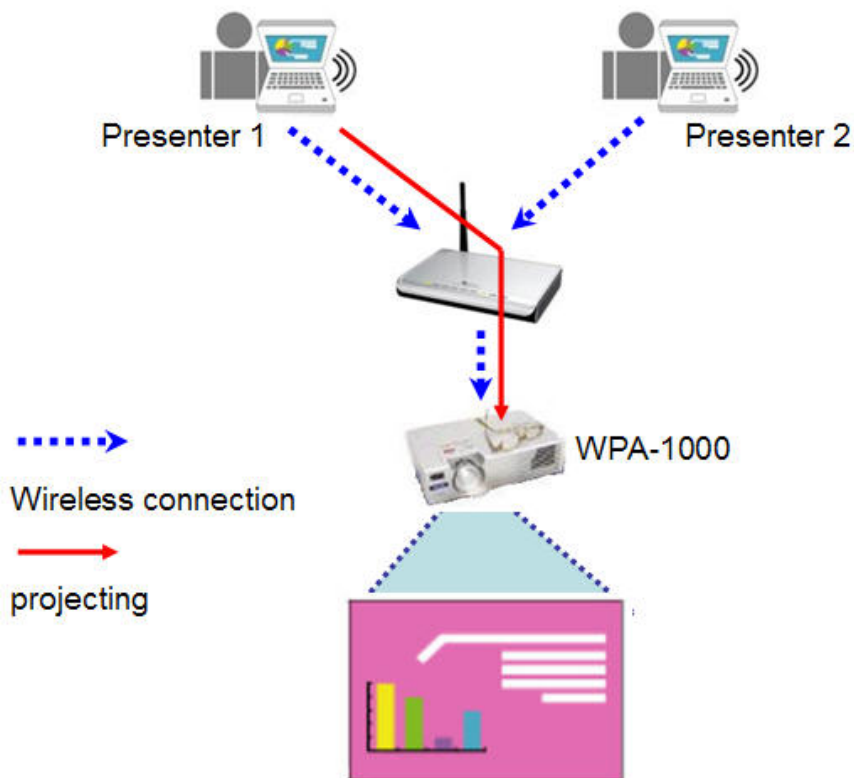
2. When the LOGIN window pops up, enter the LOGIN CODE which was shown on the standby screen before. The LOGIN CODE is 1234 now. The LOGIN CODE will be changed periodically.



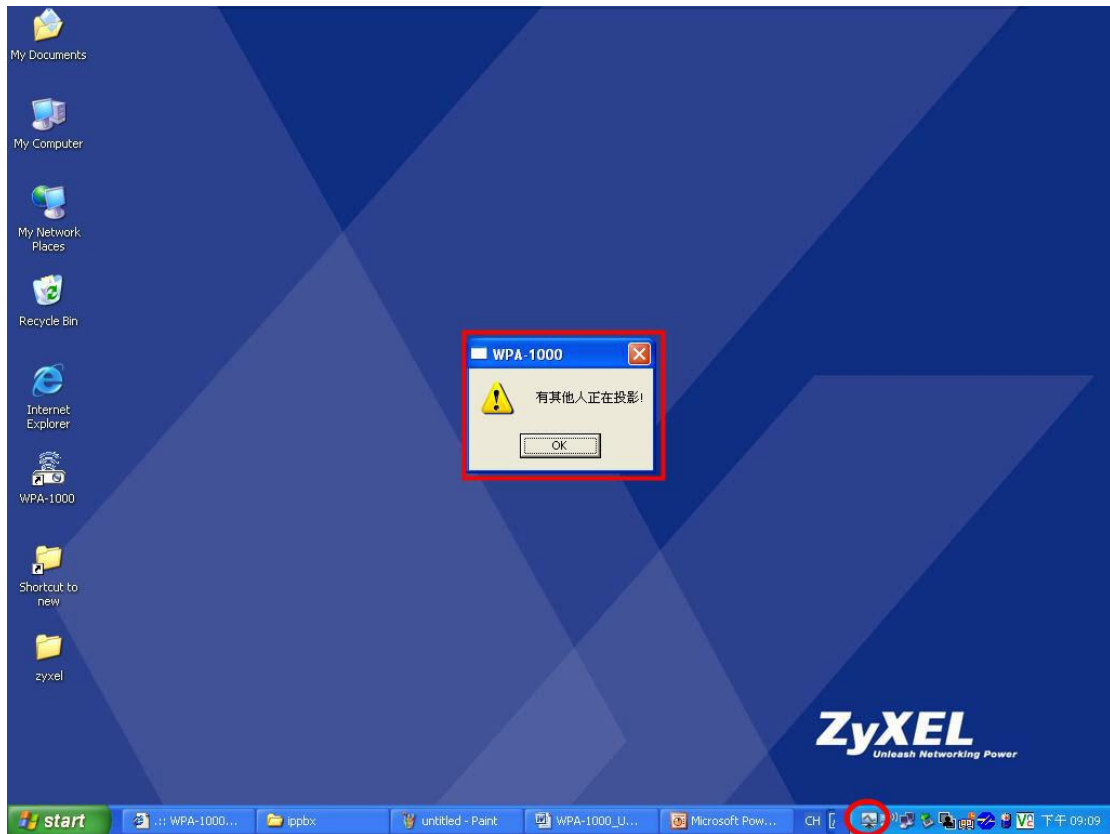
3. If Presenter1 is the only person who connects to the WPA-1000, then his/her desktop screen will be projected onto the screen of the meeting room. Presenter1 can now start the presentation.



Starting projecting on Presenter2

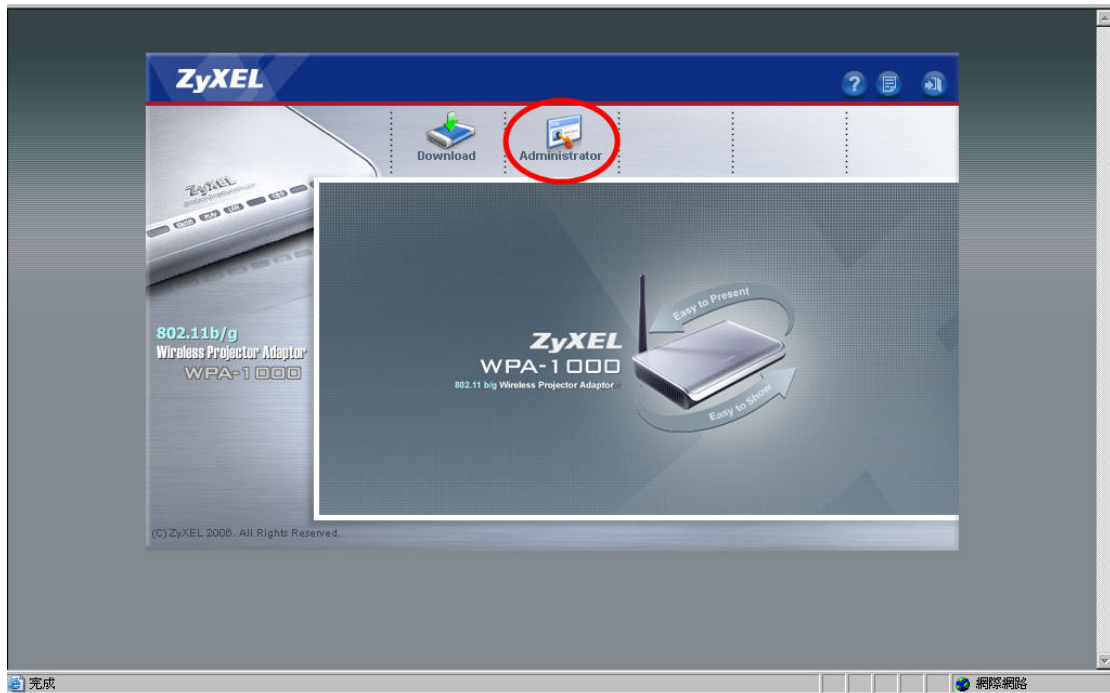


1. Follow steps 1~3 as before. Presenter2 can also connect his/her computer to the WPA-1000.
2. Since WPA-1000 is now playing the presentation for Presenter1, therefore Presenter2 will receive window pop-up warning that “Some one is using projector now”. But on the system tray, we still can see the icon which means that the Presenter2’s computer now has been connected to the WPA-1000.
3. Presenter2 now have to wait for the administrator of WPA-1000 to assign him to the next person who is in line for screen projecting via WPA-1000.

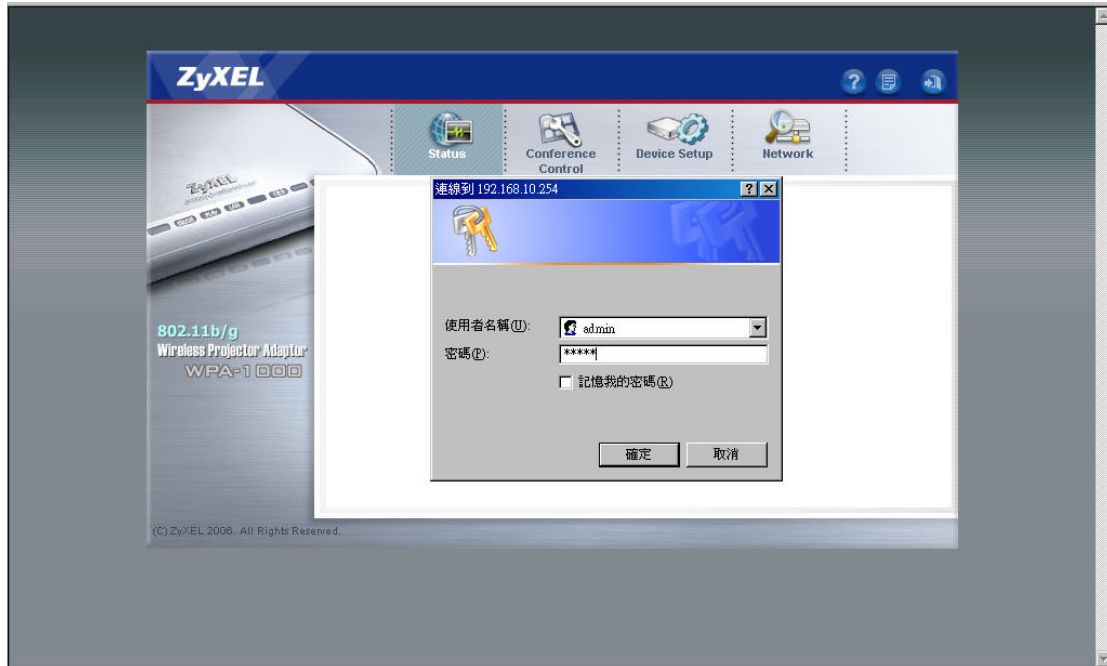


To Manage the WPA-1000 as the administrator.

1. Enter the ip address 192.168.10.254 to access the WPA-1000 Web page.
Click "Administrator".

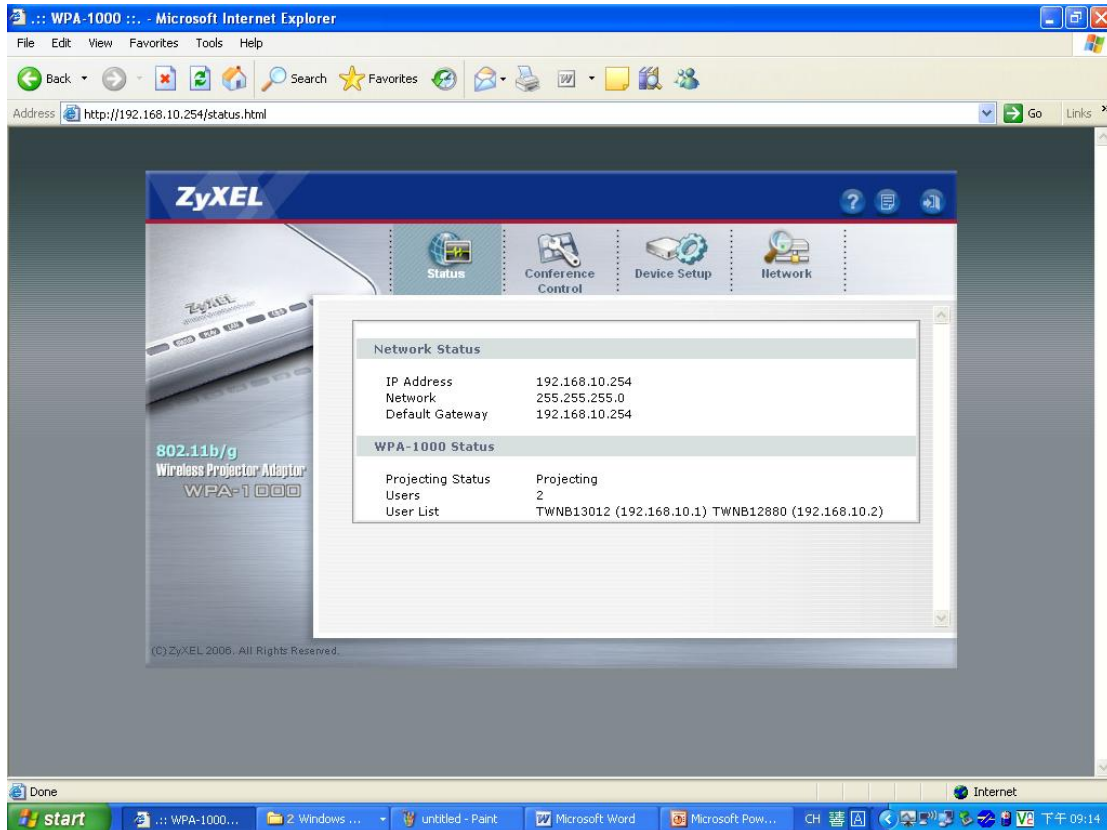


2. Enter the admin/admin as the user name and password

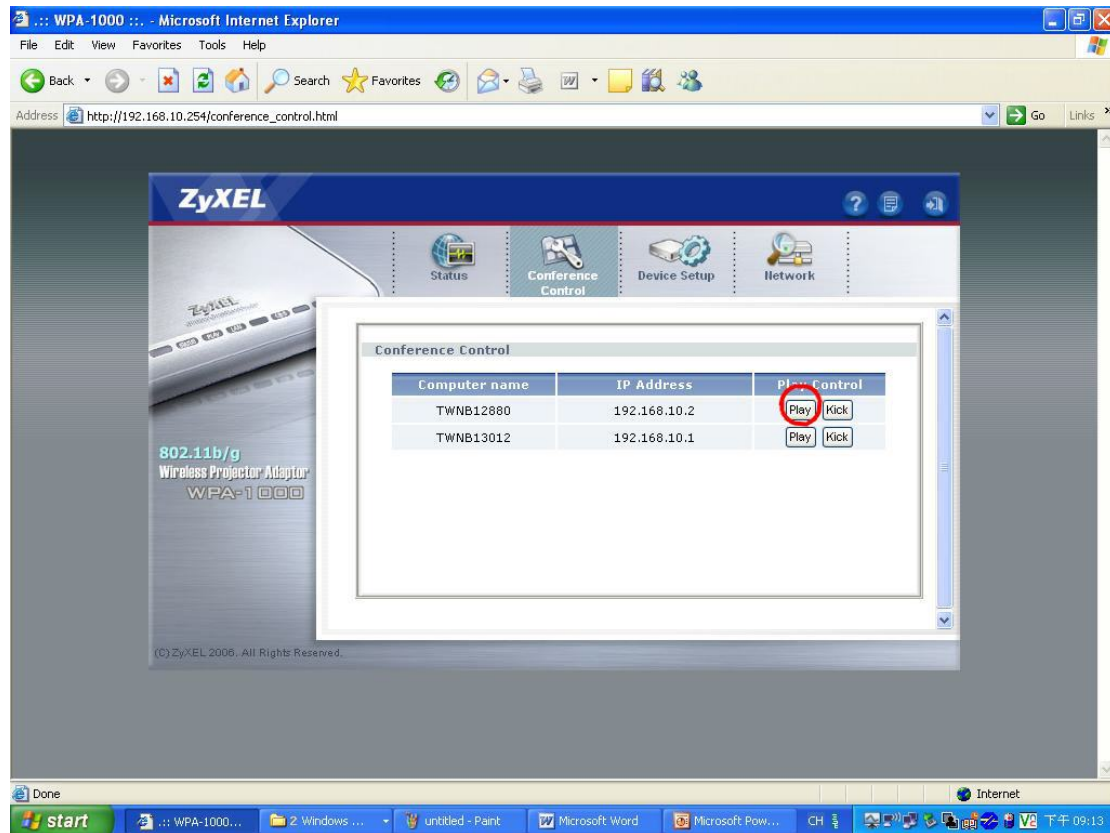


3. You can see the current status of the WPA-1000 in this screen.

There are two users who connected to WPA-1000 and one of them is doing screen projecting now.

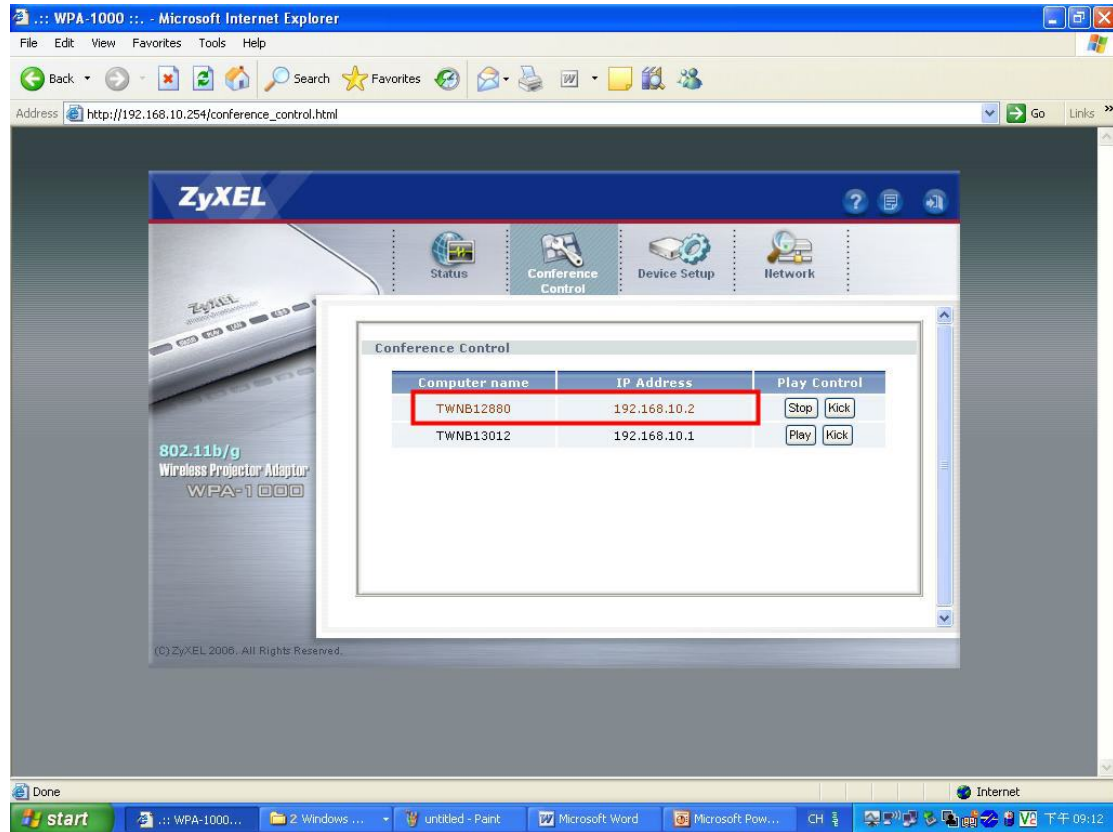


4. By clicking “**Conference Control**” item, we can see there are two users who are connected to WPA-1000. By clicking “Play” button, the administrator can decide who can do the screen projecting.



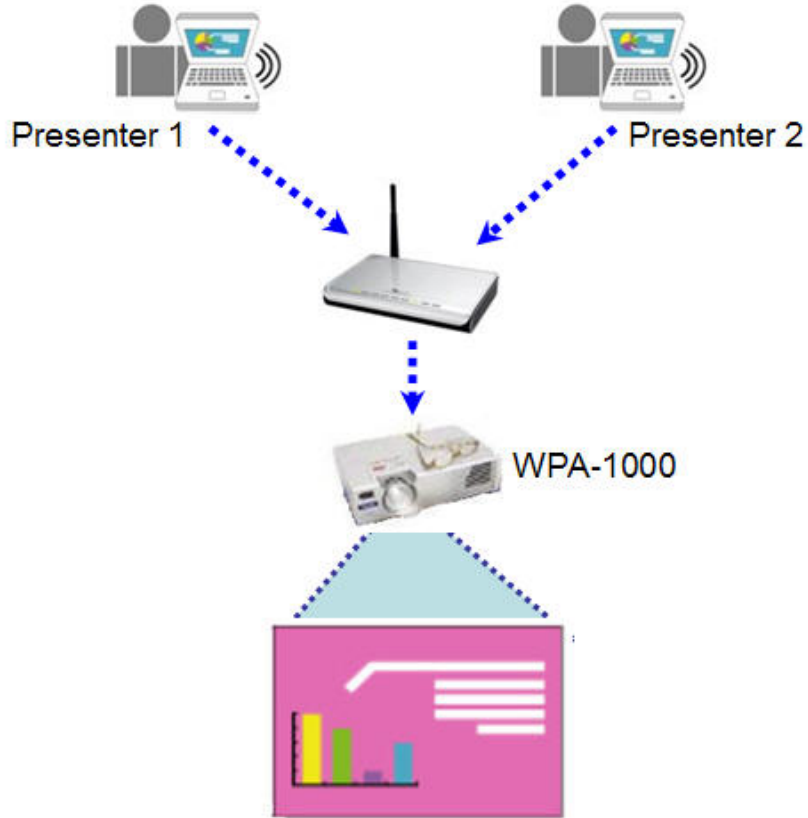
5. When the user is doing the screen projecting, the Computer name and IP Address of the user will turn red.

In this scenario, Presenter1 is the user who has the computer name TWNB12880 and doing the screen projecting. Moreover, Presenter1 is also the administrator of WPA-1000. Therefore, Presenter1 has the ability to determine who can do the screen projecting via WPA-1000.

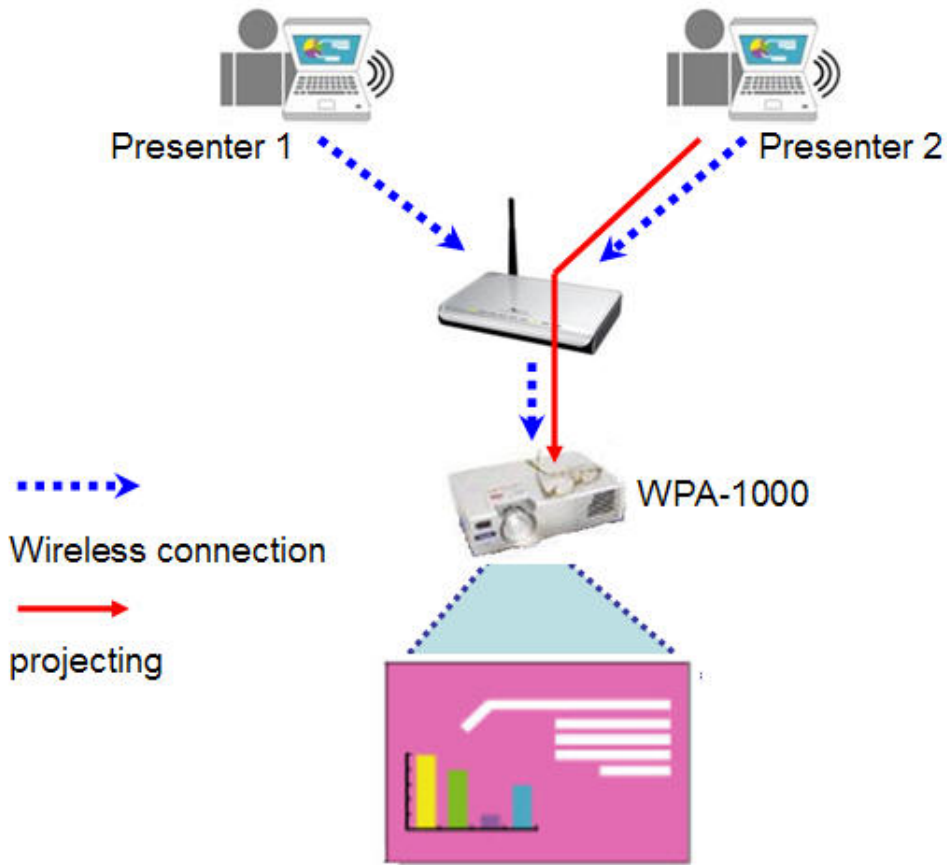


Administrator can stop the currently user's screen projecting by clicking the “**Stop**” button.

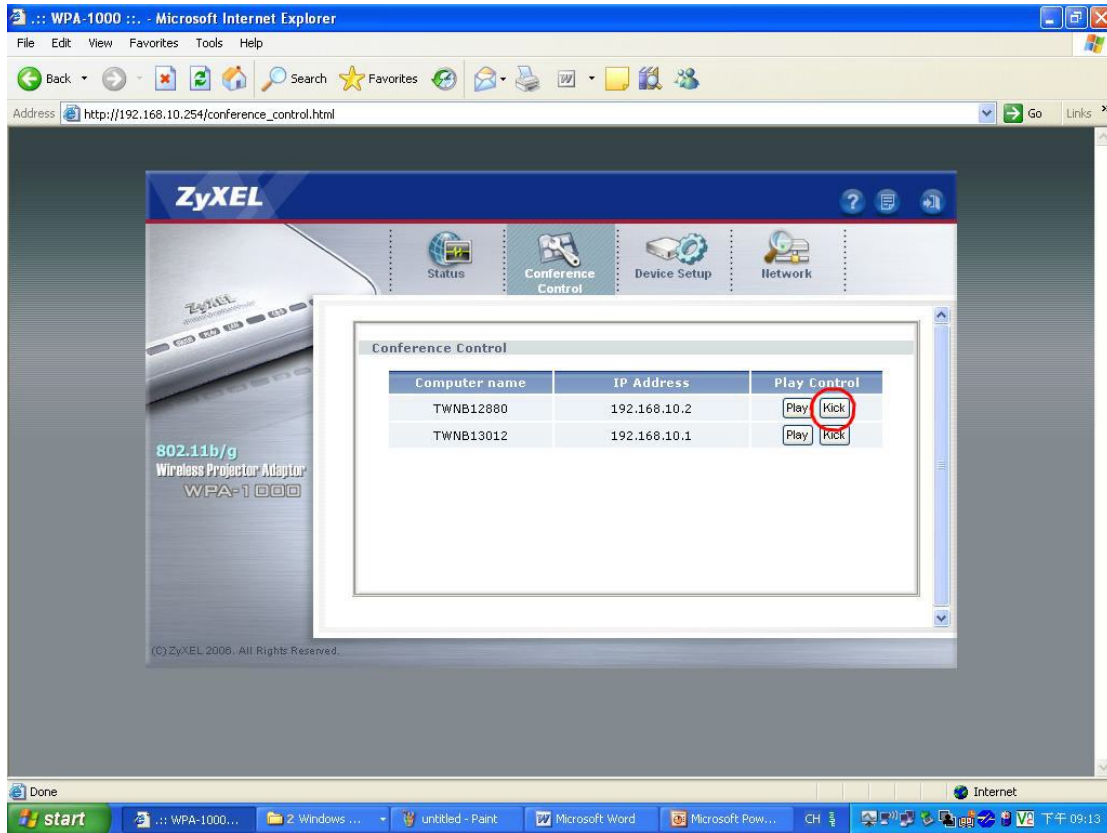
After clicking the “**Stop**” button in the Play Control field, Presenter1 now is stopped from projecting.



By clicking the “**Play**” button, the administrator can assign Presenter2 to be the presenter who can use WPA-1000 to do the projecting.



By clicking the “Kick” button, the administrator can even disconnect user’s connection from WPA-1000.



After clicking the “**Kick**” button, Presenter1 has disconnected from the WPA-1000 now.

Now, Presenter2 is the only person who still connects to the WPA-1000 and doing the projecting.

